

Classroom Dollars and Proposition 301 Results

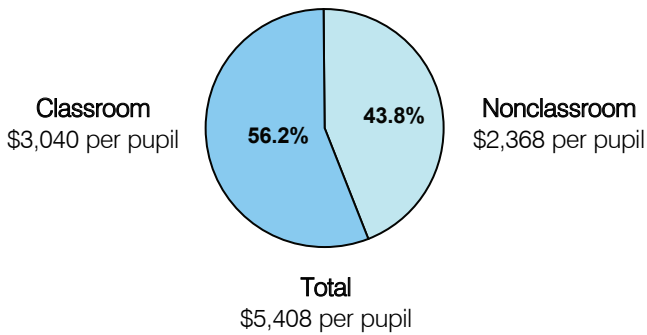
J. O. Combs Elementary School District

Pinal County

District size: Medium
 Students attending: 1,013
 Number of schools: 2
 Number of certified teachers: 52

Classroom Dollars

Fiscal year 2005

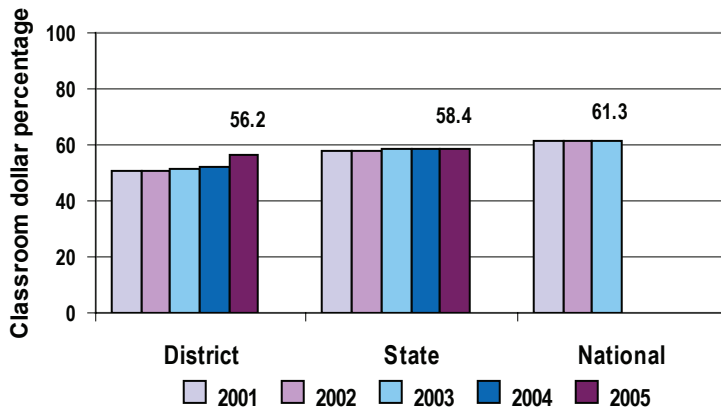


Comparative Information

	District			State
	2003	2004	2005	2005
Student/teacher ratio	18.0	18.3	19.7	18.3
Average teacher salary	\$30,365	\$26,887	\$31,333	\$39,095
Average years' experience	5.1	5.0	4.5	8.5

Classroom dollar ranking: 103 of 228 districts.

5-year comparison



Expenditures by function

	District					State	National
	2001	2002	2003	2004	2005	2005	2002
Classroom dollars	50.5	50.4	51.6	52.3	56.2	58.4	61.5
Nonclassroom dollars:							
Administration	21.0	22.9	18.2	16.2	14.5	9.5	11.1
Plant operations	11.8	10.6	13.5	12.7	9.9	11.4	9.5
Food service			4.4	3.9	4.5	4.8	4.0
Transportation	9.0	5.7	6.7	8.1	7.2	4.1	4.0
Student support	6.2	6.0	5.2	5.8	4.1	7.0	5.0
Instruction support	1.4	4.4	0.4	1.0	3.6	4.6	4.7
Other	0.1					0.2	0.2

Proposition 301

District-reported 2005 results

Teacher pay

- On average, each teacher earned an additional \$1,857 in salary.

Performance

- The District accomplished its goals, which were based on school and individual performance.
- Students gained 3 percent in mathematics and maintained or exceeded 1 year's growth in reading.
- Teachers completed professional development courses, received acceptable performance evaluations, and completed lesson plans using a standards-based format.

Menu

- Monies were used to add 4 days of base salary and benefits for the District's teachers, and for AIMS test preparation materials for students.