

# J. O. Combs Unified School District

Pinal County  
Operational peer group: D  
Legislative districts: 23

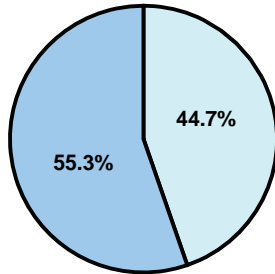
District size: Medium-Large  
Students attending: 3,706  
Number of schools: 6

## OPERATIONAL EFFICIENCY

### Average per-pupil spending

District  
State

Classroom  
\$3,656  
\$4,497



Nonclassroom  
\$2,960  
\$3,411

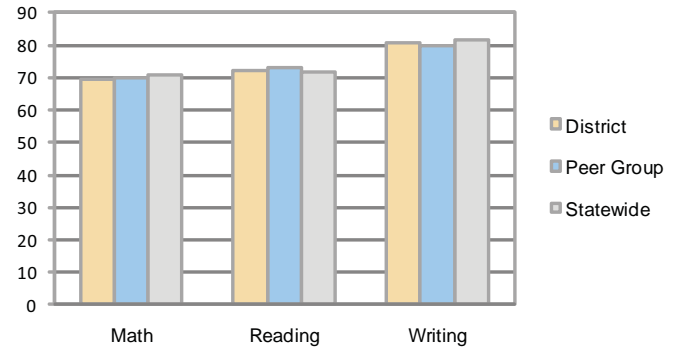
Total  
\$6,616  
\$7,908

### 5-year trend

Total spending per pupil increased by 11 percent. Spending in the classroom was very inconsistent year to year and increased significantly overall from 52.3 to 55.3 percent. Spending on administration, plant operations, and transportation decreased, while spending in other nonclassroom areas varied year to year.

## STUDENT ACHIEVEMENT AND TEACHER INFORMATION

### Percentage of students meeting state standards (AIMS)



### Adequate Yearly Progress (AYP) toward federal goals

6 schools met all applicable AYP objectives for NCLB.

### District's cost measures relative to peer group

Operational Area	Measure	District	Peer Average	State Average
Administration	Cost per pupil	\$803	\$775	\$729
	Students per administrator	81	61	66
Plant Operations	Cost per square foot	\$6.46	\$6.13	\$6.40
	Square footage per student	113	168	144
Food Service	Cost per meal equivalent	\$1.93	\$2.64	\$2.53
Transportation	Cost per mile	\$3.86	\$2.96	\$3.36
	Miles per rider	216	307	271

Very Low   Low   Comparable   High   Very High

### Student and teacher information

Measure	District	Peer average	State average
Attendance rate	95%	94%	95%
Graduation rate (2008)	N/A	73%	75%
Poverty rate	11%	15%	19%
Student/teacher ratio	15.8	17.2	17.1
Average teacher salary	\$34,729	\$42,175	\$45,209
Average years' experience	5.5	8.4	8.3
Percent of teachers in first 3 years	48%	34%	16%

### Proposition 301

#### Teacher pay

On average, each teacher earned an additional \$3,910 in salary, and each librarian, speech pathologist, and counselor earned between \$3,333 and \$6,401.

#### Performance pay plan goals and results

Type of goal	Goal met?
Student achievement	▲
Dropout/ graduation rates	
Student attendance	
Parent/student satisfaction	
Teacher attendance	
Teacher professional development	■
Teacher evaluations	
Tutoring	
Other	■

■ = yes, □ = no, and ▲ = partially

### Per-pupil spending by function

	District		Peer 2009	State 2009	National 2007
	2008	2009			
<b>Total</b>	<b>\$6,019</b>	<b>\$6,616</b>	<b>\$7,896</b>	<b>\$7,908</b>	<b>\$9,683</b>
<b>Classroom dollars</b>	<b>\$3,198</b>	<b>\$3,656</b>	<b>\$4,312</b>	<b>\$4,497</b>	<b>\$5,903</b>
<b>Nonclassroom dollars:</b>	<b>\$2,821</b>	<b>\$2,960</b>	<b>\$3,584</b>	<b>\$3,411</b>	<b>\$3,780</b>
Administration	835	803	775	729	1,050
Plant Operations	741	728	1,032	920	951
Food Service	241	264	365	382	369
Transportation	341	368	397	343	406
Student Support	430	459	629	594	512
Instruction Support	230	331	380	431	470
Other	3	7	6	12	22