

Joseph City Unified School District

Navajo County

Efficiency peer groups 6 and T-10, Achievement peer group 6¹

Legislative district(s): 6 and 7

District size, location:

Small, Rural

Students attending:

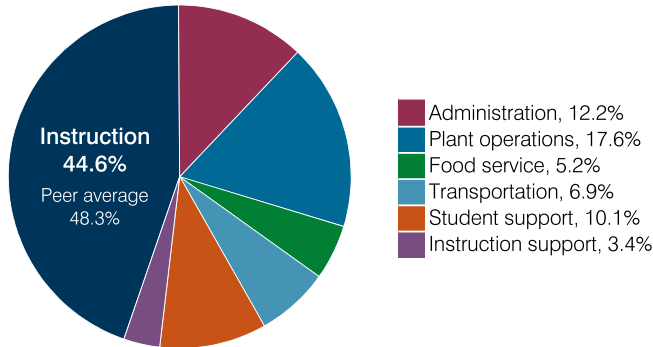
412

Number of schools:

2

OPERATIONAL EFFICIENCY

Spending by operational area



Efficiency measures relative to peer averages

Operational area	Measure	District	Peer average	State average
Administration	Cost per pupil	\$1,542	\$1,744	\$860
	Students per administrative position	34	43	66
Plant operations	Cost per square foot	\$4.33	\$5.27	\$6.34
	Square footage per student	512	321	156
Food service	Cost per meal	\$4.10	\$3.96	\$3.02
Transportation	Cost per mile	\$1.84	\$1.95	\$4.05
	Cost per rider	\$2,340	\$1,572	\$1,301

Very low
Low
Comparable
High
Very high

Per pupil spending

Spending by area	District		Peer average 2018	State average 2018
	2017	2018		
Instruction	\$ 5,679	\$ 5,633	\$ 5,556	\$ 4,480
Administration	1,510	1,542	1,744	860
Plant operations	2,120	2,217	1,706	988
Food service	490	658	546	425
Transportation	831	874	592	388
Student support	1,251	1,278	672	693
Instruction support	506	424	393	462
Total operational	12,387	12,626	11,209	8,296
Land and buildings	591	580	1,077	827
Equipment	516	322	601	409
Interest	388	256	162	228
Other	131	229	60	169
Total nonoperational	1,626	1,387	1,900	1,633
Total per pupil spending	\$ 14,013	\$ 14,013	\$ 13,109	\$ 9,929

¹ See Appendix A for information such as districts included in each peer group and Appendix B for sources and methodology.

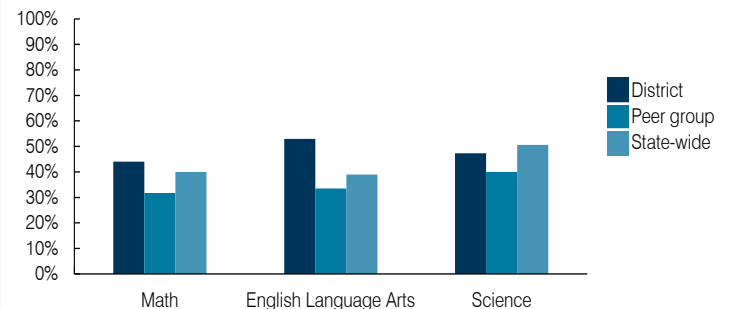
STUDENT ACHIEVEMENT, STUDENT AND TEACHER MEASURES, AND REVENUES

ADE-assigned school letter grades

Grade	Number of schools ²	Percentage of schools
A	2	67%
B	0	0%
C	1	33%
D	0	0%
F	0	0%

² Includes schools that share a campus.

Students who passed State assessments



Student and teacher measures

Measure	District	Peer average	State average
Attendance rate	95%	93%	94%
Graduation rate (2017)	100%	85%	78%
Poverty rate (2017)	28%	29%	19%
Special education population	13%	14%	12%
Students per teacher	15.3	16.2	18.4
Average teacher salary	\$44,873	\$46,264	\$48,951
Amount from Prop 301	\$5,139	\$6,122	\$6,411
Average years of teacher experience	13.6	12.2	11.4
Percentage of teachers in first 3 years	15%	20%	19%

Per pupil revenues

Revenues by source	District		Peer average 2018	State average 2018
	2017	2018		
Federal	\$ 1,408	\$ 1,613	\$ 2,405	\$ 1,317
State	890	761	4,080	4,011
Local	13,232	12,540	8,027	4,592
Total per pupil revenues	\$ 15,530	\$ 14,914	\$ 14,512	\$ 9,920

Select revenues from common sources

Equalization formula funding	\$ 7,234	\$ 6,903	\$ 7,175	\$ 5,585
Grants	1,644	1,572	2,252	1,241
Donations and tax credits	63	96	337	90

Select revenues from less common sources

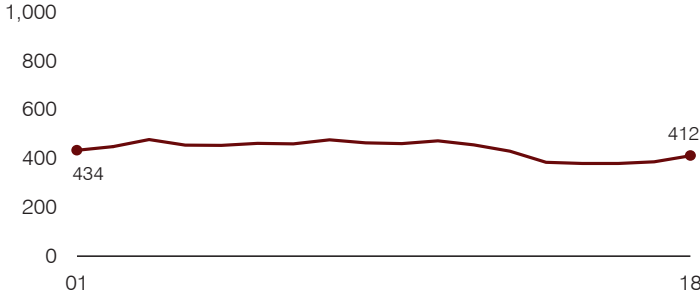
			Number of peers receiving
Desegregation	\$ 0	\$ 0	0 of 18
Small school adjustment	0	0	5 of 18
Federal impact aid	0	0	3 of 18
Voter-approved levy increases	2,608	2,486	14 of 18

Instructional spending percentage

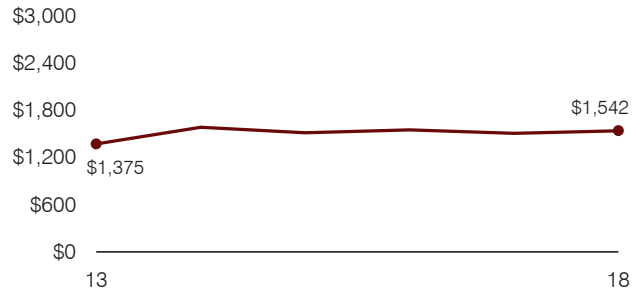
Year: 2001 2002 2003 2004 2005 2006 2007 2008 2009 2010 2011 2012 2013 2014 2015 2016 2017 2018
 Percentage: 48.8 54.6 60.2 55.5 55.0 54.0 50.9 49.4 48.3 49.6 48.1 47.8 46.9 45.9 44.2 44.3 45.8 44.6

TRENDS AND FINANCIAL STRESS ASSESSMENT
 Fiscal years as indicated

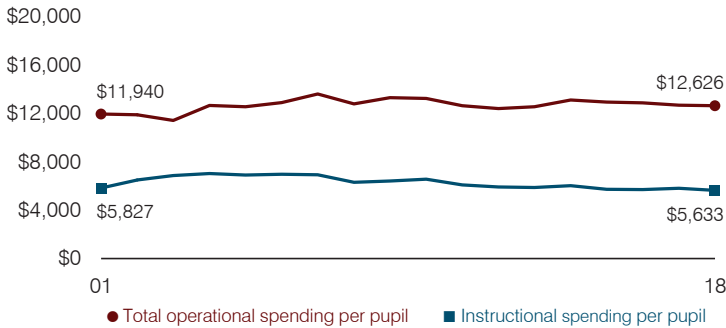
Students attending



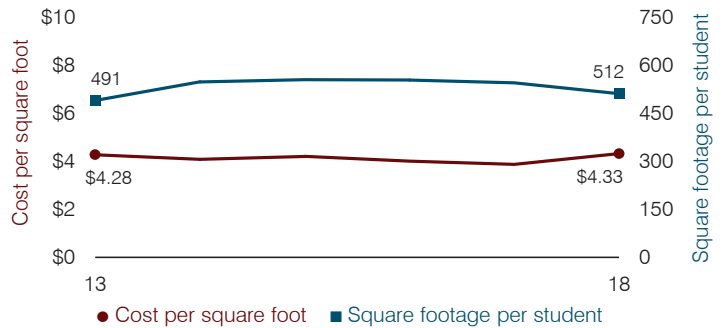
Administrative cost per pupil



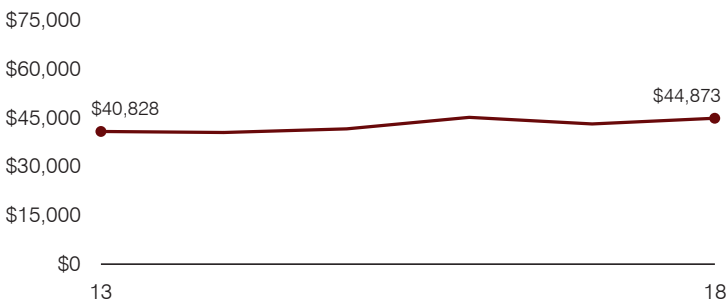
Total operational and instructional spending per pupil (inflation adjusted to 2018 dollars)



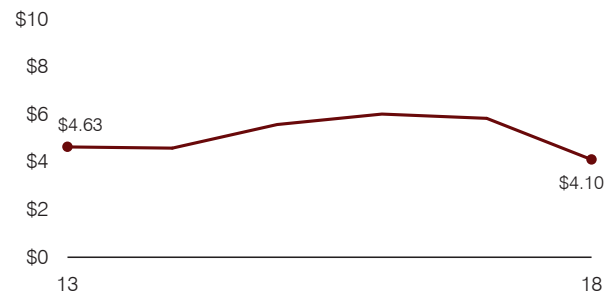
Plant cost per square foot and square footage per student



Average teacher salary



Food service cost per meal



Financial stress assessment

Overall financial stress level: **Moderate**

Measure: 2016 through 2018	Assessment
Change in number of district students	Increase
Spending exceeded operating/capital budgets	Isolated
Spending increase election results	Voter-rejected
Operating reserve percentage, Trend	0.4%, Decreasing
Years of capital reserve held	1 to 3 years
Current financial and internal control status	Compliant

Low	Moderate	High

Transportation costs per mile and per rider

