

# Joseph City Unified School District

Navajo County  
Operational peer group: F  
Legislative districts: 2, 5

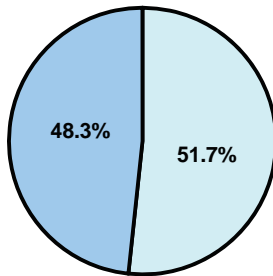
District size: Small  
Students attending: 464  
Number of schools: 2

## OPERATIONAL EFFICIENCY

### Average per-pupil spending

District  
State

**Classroom**  
\$5,548  
\$4,497



**Nonclassroom**  
\$5,949  
\$3,411

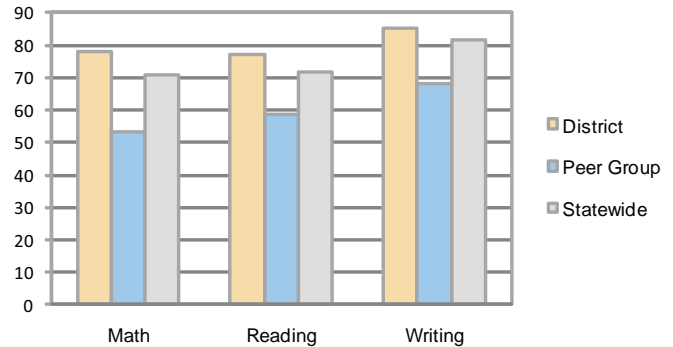
**Total**  
\$11,497  
\$7,908

### 5-year trend

Total spending per pupil increased by 21 percent. Spending in the classroom varied year to year and decreased significantly overall from 55.5 to 48.3 percent. Spending on plant operations, transportation, and student and instruction support increased, while spending in other nonclassroom areas varied year to year.

## STUDENT ACHIEVEMENT AND TEACHER INFORMATION

### Percentage of students meeting state standards (AIMS)



### Adequate Yearly Progress (AYP) toward federal goals

2 schools met all applicable AYP objectives for NCLB.

### District's cost measures relative to peer group

Operational Area	Measure	District	Peer Average	State Average
Administration	Cost per pupil	\$1,277	\$1,524	\$729
	Students per administrator	39	42	66
Plant Operations	Cost per square foot	\$4.38	\$5.78	\$6.40
	Square footage per student	438	284	144
Food Service	Cost per meal equivalent	\$3.74	\$3.38	\$2.53
Transportation	Cost per mile	\$0.97	\$2.60	\$3.36
	Miles per rider	NR	294	271

Very Low   Low   Comparable   High   Very High

### Student and teacher information

Measure	District	Peer average	State average
Attendance rate	95%	94%	95%
Graduation rate (2008)	97%	73%	75%
Poverty rate	22%	30%	19%
Student/teacher ratio	14.4	14.2	17.1
Average teacher salary	\$42,731	\$41,521	\$45,209
Average years' experience	12.7	10.8	8.3
Percent of teachers in first 3 years	27%	23%	16%

### Proposition 301

#### Teacher pay

On average, each teacher and counselor earned between \$3,325 and \$3,419 in additional salary.

### Per-pupil spending by function

	District		Peer	State	National
	2008	2009	2009	2009	2007
<b>Total</b>	<b>\$10,895</b>	<b>\$11,497</b>	<b>\$10,596</b>	<b>\$7,908</b>	<b>\$9,683</b>
<b>Classroom dollars</b>	<b>\$5,377</b>	<b>\$5,548</b>	<b>\$5,393</b>	<b>\$4,497</b>	<b>\$5,903</b>
<b>Nonclassroom dollars:</b>	<b>\$5,518</b>	<b>\$5,949</b>	<b>\$5,203</b>	<b>\$3,411</b>	<b>\$3,780</b>
Administration	1,451	1,277	1,524	729	1,050
Plant Operations	1,905	1,915	1,549	920	951
Food Service	293	318	496	382	369
Transportation	794	879	552	343	406
Student Support	671	1,053	593	594	512
Instruction Support	404	507	481	431	470
Other	0	0	8	12	22

### Performance pay plan goals and results

Type of goal	Goal met?
Student achievement	■
Dropout/ graduation rates	
Student attendance	
Parent/student satisfaction	
Teacher attendance	
Teacher professional development	▲
Teacher evaluations	
Tutoring	
Other	

■ = yes, □ = no, and ▲ = partially