

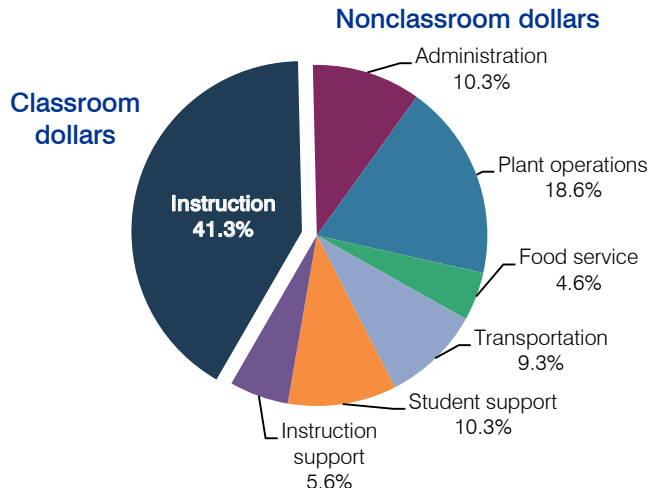
# Kayenta Unified School District

Navajo County  
 Efficiency peer groups 5 and T-11, Achievement peer group 8  
 Legislative district(s): 7

District size / location: Medium, Rural  
 Students attending: 1,955  
 Number of schools: 3

## OPERATIONAL EFFICIENCY

### Spending by operational area



### 5-year spending trend

Total spending per pupil decreased by 3 percent. Spending in the classroom decreased from 45.3 to 41.3 percent. Overall, spending on administration decreased and spending on transportation and student support increased substantially. Spending on other nonclassroom areas remained fairly stable.

### Cost measures relative to peer averages

Operational area	Measure	District	Peer average	State average
Administration	Cost per pupil	\$1,117	\$1,074	\$736
	Students per administrator	51	56	66
Plant operations	Cost per square foot	\$7.01	\$4.82	\$6.09
	Square footage per student	288	250	152
Food service	Cost per meal equivalent	\$2.10	\$2.97	\$2.47
Transportation	Cost per mile	\$2.50	\$2.21	\$3.50
	Cost per rider	\$1,257	\$978	\$982

Very low   Low   Comparable   High   Very high

### Per-pupil spending by operational area

	District		Peer average	State average	National average
	2011	2012	2012	2012	2010
<b>Total</b>	<b>\$10,811</b>	<b>\$10,803</b>	<b>\$8,416</b>	<b>\$7,475</b>	<b>\$10,652</b>
<b>Classroom dollars</b>	<b>4,502</b>	<b>4,458</b>	<b>4,202</b>	<b>4,053</b>	<b>6,526</b>
<b>Nonclassroom dollars:</b>	<b>6,309</b>	<b>6,345</b>	<b>4,214</b>	<b>3,422</b>	<b>4,126</b>
Administration	1,131	1,117	1,074	736	1,139
Plant operations	1,884	2,015	1,179	928	1,012
Food service	445	493	412	382	405
Transportation	931	1,005	536	362	443
Student support	1,224	1,115	619	578	592
Instruction support	694	600	394	436	535

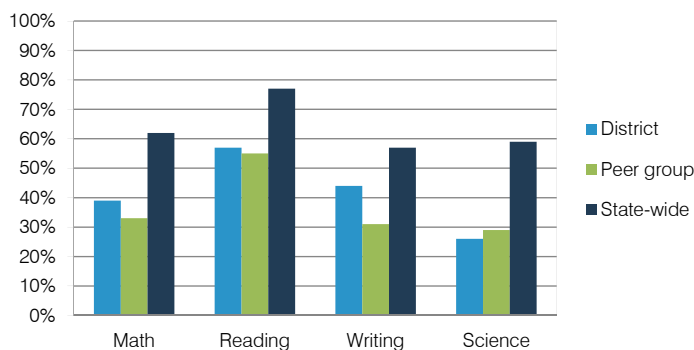
## STUDENT ACHIEVEMENT, TEACHER MEASURES, AND FINANCIAL ASSESSMENT

### ADE-reported district and school letter grades

District grade: **C**

Grade	Number of schools	Percentage of schools
A	0	0%
B	0	0%
C	1	33%
D	2	67%
F	0	0%
Not rated	0	0%

### Percentage of students who met state standards (AIMS)



### Student and teacher measures

Measure	District	Peer average	State average
Attendance rate	91%	92%	94%
Graduation rate (2011)	70%	69%	78%
Poverty rate (2011)	51%	49%	25%
Students per teacher	15.5	14.8	18.1
Average teacher salary	\$43,717	\$42,031	\$45,193
Amount from Proposition 301	\$1,897	\$3,203	\$3,195
Average years of teacher experience	14.3	11.5	11.0
Percentage of teachers in first 3 years	4%	19%	16%

### Financial stress assessment

Overall financial stress level: **Low**

Measure: 2010 through 2012	Assessment
Number of students attending	Steady
Spending exceeded operating/capital budgets	No overspending
Spending increase election results	No election held
Operating reserve percentage (max. 4%), trend	Impact Aid Fund reserve
Years of capital reserve held	More than 3 years
Current financial and internal control status	Compliant

