

Kayenta Unified School District

Navajo County
Peer groups: Efficiency Group 4, Achievement Group 8
Legislative district(s): 2

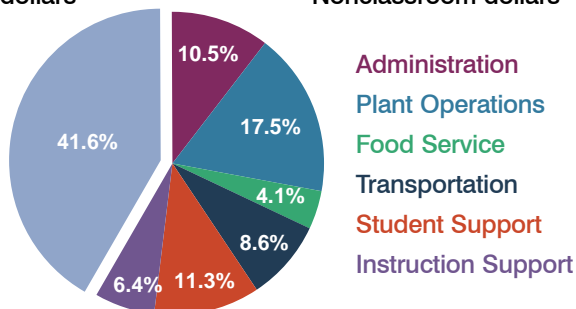
District size: Medium-Large
Students attending: 2,017
Number of schools: 4

OPERATIONAL EFFICIENCY

Spending by operational area

Classroom dollars

Nonclassroom dollars



5-year trend

Total spending per pupil increased by 7 percent. Spending in the classroom varied year to year, decreasing significantly overall from 44.5 to 41.6 percent. Spending on administration and plant operations decreased, and spending on transportation and student support increased significantly. Spending on other nonclassroom areas remained fairly stable.

District's cost measures relative to peer group

Operational Area	Measure	District	Peer Average	State Average
Administration	Cost per pupil	\$1,131	\$736	\$728
	Students per administrator	45	65	66
Plant Operations	Cost per square foot	\$5.81	\$5.52	\$6.10
	Square footage per student	324	169	152
Food Service	Cost per meal equivalent	\$2.15	\$2.60	\$2.45
Transportation	Cost per mile	\$2.49	\$2.93	\$3.39
	Miles per rider	502	324	283

Very low Low Comparable High Very high

Per-pupil spending by operational area

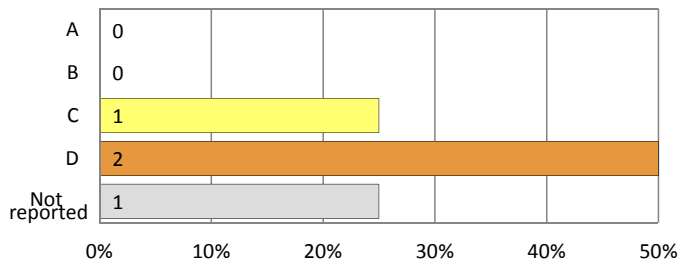
	District		Peer 2011	State 2011	National 2009
	2010	2011			
Total	\$11,643	\$10,811	\$7,026	\$7,485	\$10,591
Classroom dollars	\$4,809	\$4,502	\$3,783	\$4,098	\$6,456
Nonclassroom dollars:	\$6,834	\$6,309	\$3,243	\$3,387	\$4,135
Administration	1,154	1,131	736	728	1,147
Plant Operations	2,311	1,884	917	927	1,033
Food Service	497	445	351	375	404
Transportation	892	931	360	352	443
Student Support	1,270	1,224	528	571	573
Instruction Support	710	694	351	434	535

STUDENT ACHIEVEMENT AND TEACHER INFORMATION

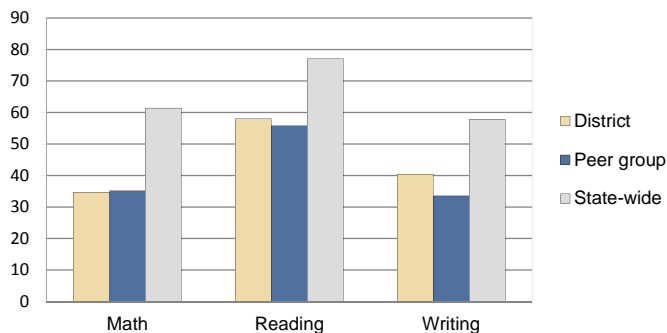
District and school letter grades

District grade: **D**

School grades (number and percentage):



Percentage of students meeting state standards (AIMS)



Student and teacher information

Measure	District	Peer Average	State Average
Attendance rate	90%	92%	95%
Graduation rate (2010)	83%	68%	78%
Poverty rate (2010)	39%	40%	22%
Students per teacher	15.6	15.5	18.1
Average teacher salary	\$42,709	\$42,449	\$45,637
Average years of experience	14.3	12.2	10.9
Percent of teachers in first 3 years	6%	16%	16%

Proposition 301 pay, goals, and results

Average additional salary earned by teachers: \$3,222

Type of goal	Goal met?
Student achievement	▴
Dropout/graduation rates	■
Student attendance	■
Parent/student satisfaction	■
Teacher attendance	■
Teacher professional development	■
Teacher evaluations	■
Tutoring	■
Other	■

■ = yes, □ = no, ▴ = partially, and - = no goal set