

Kayenta Unified School District

Navajo County
Operational peer group: D
Legislative districts: 2

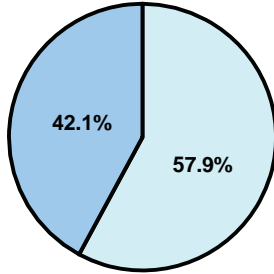
District size: Medium-Large
Students attending: 2,085
Number of schools: 4

OPERATIONAL EFFICIENCY

Average per-pupil spending

District
State

Classroom
\$4,782
\$4,497



Nonclassroom
\$6,580
\$3,411

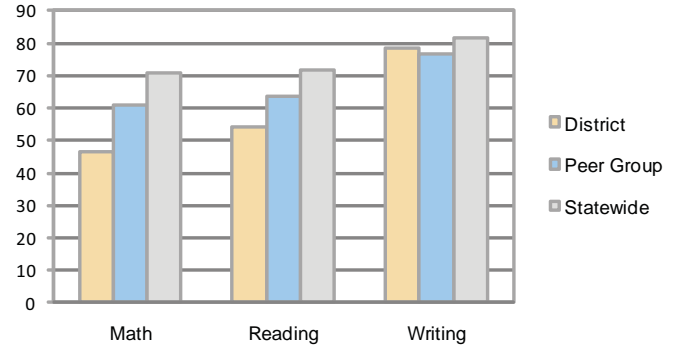
Total
\$11,362
\$7,908

5-year trend

Total spending per pupil increased by 27 percent. Spending in the classroom varied year to year and decreased significantly overall from 47.9 to 42.1 percent. Spending on plant operations and student support increased significantly, while spending in other nonclassroom areas varied year to year.

STUDENT ACHIEVEMENT AND TEACHER INFORMATION

Percentage of students meeting state standards (AIMS)



Adequate Yearly Progress (AYP) toward federal goals

2 schools met all applicable AYP objectives for NCLB. 2 did not because some students failed to demonstrate sufficient academic progress.

District's cost measures relative to peer group

Operational Area	Measure	District	Peer Average	State Average
Administration	Cost per pupil	\$1,057	\$775	\$729
	Students per administrator	52	61	66
Plant Operations	Cost per square foot	\$7.73	\$6.13	\$6.40
	Square footage per student	305	168	144
Food Service	Cost per meal equivalent	\$3.07	\$2.64	\$2.53
Transportation	Cost per mile	\$2.29	\$2.96	\$3.36
	Miles per rider	530	307	271

Very Low Low Comparable High Very High

Student and teacher information

Measure	District	Peer average	State average
Attendance rate	94%	94%	95%
Graduation rate (2008)	83%	75%	75%
Poverty rate	37%	29%	19%
Student/teacher ratio	13.6	17.6	17.1
Average teacher salary	\$39,979	\$44,586	\$45,209
Average years' experience	11.8	10.4	8.3
Percent of teachers in first 3 years	18%	23%	16%

Proposition 301

Teacher pay

On average, each teacher earned \$2,375 in additional salary, and each instructional aide, librarian, counselor, social worker, staff developer, and literacy coach earned between \$511 and \$2,423.

Performance pay plan goals and results

Type of goal	Goal met?
Student achievement	▴
Dropout/ graduation rates	■
Student attendance	■
Parent/student satisfaction	■
Teacher attendance	■
Teacher professional development	■
Teacher evaluations	■
Tutoring	■
Other	■

■ = yes, □ = no, and ▴ = partially

Per-pupil spending by function

	District		Peer	State	National
	2008	2009	2009	2009	2007
Total	\$11,145	\$11,362	\$7,896	\$7,908	\$9,683
Classroom dollars	\$4,809	\$4,782	\$4,312	\$4,497	\$5,903
Nonclassroom dollars:	\$6,336	\$6,580	\$3,584	\$3,411	\$3,780
Administration	1,065	1,057	775	729	1,050
Plant Operations	2,151	2,361	1,032	920	951
Food Service	497	507	365	382	369
Transportation	904	815	397	343	406
Student Support	1,126	1,175	629	594	512
Instruction Support	593	665	380	431	470
Other	0	0	6	12	22