

Classroom Dollars and Proposition 301 Results

Kingman Unified School District

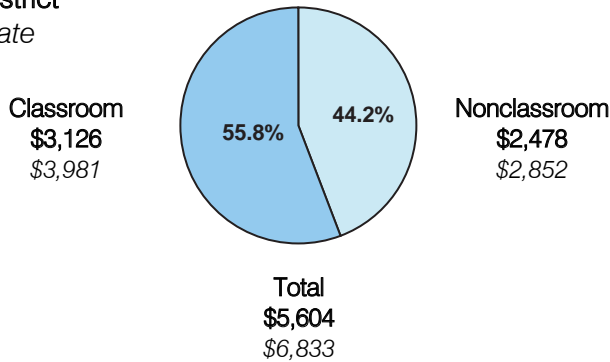
Mohave County

District size: Large
 Students attending: 7,607
 Number of schools: 10
 Number of certified teachers: 384

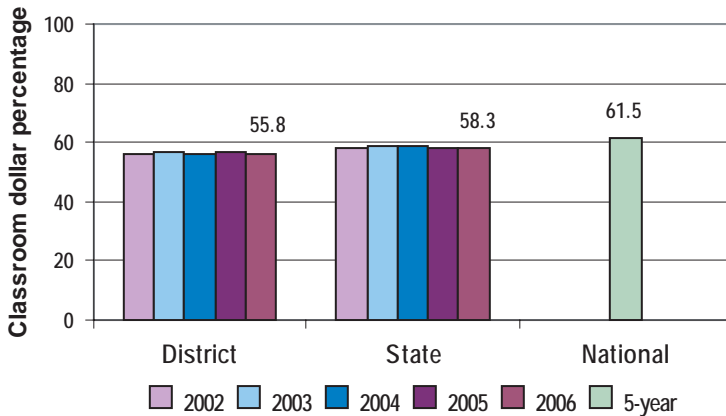
Classroom Dollars

Fiscal year 2006 averages per pupil

District
 State



5-year comparison



Expenditures by function

	District					State 2006	National 5-year
	2002	2003	2004	2005	2006		
Classroom dollars	55.8	57.0	56.4	56.7	55.8	58.3	61.5
Nonclassroom dollars:							
Administration	11.1	11.6	10.2	9.4	9.7	9.4	11.0
Plant operations	12.8	11.5	12.1	12.7	12.6	11.2	9.6
Food service	3.4	3.4	3.7	3.6	4.1	4.7	3.9
Transportation	5.8	5.3	5.7	6.0	6.1	4.2	4.0
Student support	8.3	8.0	8.0	7.4	7.9	7.2	5.1
Instruction support	2.7	3.1	3.8	4.2	3.7	4.8	4.7
Other	0.1	0.1	0.1		0.1	0.2	0.2

Comparative Information

	District			State 2006
	2004	2005	2006	
Student/teacher ratio	18.9	19.8	19.8	17.7
Average teacher salary	\$37,615	\$42,260	\$40,925	\$42,967
Average years' experience	8.0	7.9	8.1	8.3

Classroom dollar ranking: 105 of 229 districts.

Proposition 301

District-reported 2006 results

Teacher pay

- On average, each teacher, librarian, speech pathologist, audiologist, and counselor earned an additional \$6,221 in salary.

Performance

- The District accomplished its goals, which were based on district performance.
- The student achievement goal called for students to progress toward meeting or exceeding standards on standardized tests.
- All schools received "performing" or better labels from ADE for AZ LEARNS.
- 98 percent of teachers participated in at least 15 hours of professional development activities.
- 3rd- through 12th-grade students indicated a 92 percent satisfaction rate with teacher performance.
- The graduation rate increased by 2.5 percentage points.
- On average, parents who were surveyed gave schools positive ratings.

Menu

- Monies were used solely to increase eligible employee compensation.