

Kingman Unified School District

Mohave County

Efficiency peer groups 4 and T-8, Achievement peer group 5¹

Legislative district(s): 5

District size, location: Medium-large, Town

Students attending: 6,520

Number of schools: 11

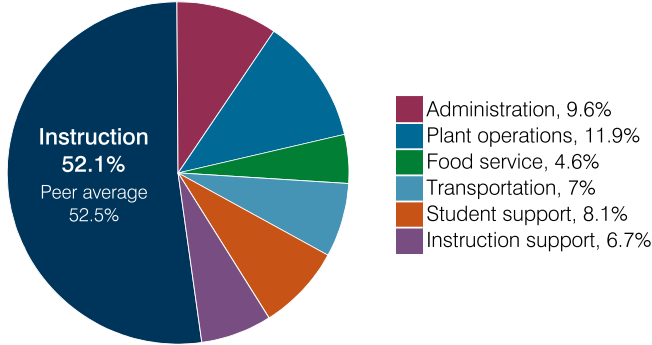
Medium-large, Town

6,520

11

OPERATIONAL EFFICIENCY

Spending by operational area



Efficiency measures relative to peer averages

Operational area	Measure	District	Peer average	State average
Administration	Cost per pupil	\$694	\$837	\$860
	Students per administrative position	66	69	66
Plant operations	Cost per square foot	\$4.00	\$5.61	\$6.34
	Square footage per student	215	184	156
Food service	Cost per meal	\$3.35	\$3.16	\$3.02
Transportation	Cost per mile	\$2.60	\$3.03	\$4.05
	Cost per rider	\$1,311	\$1,225	\$1,301

Very low Low Comparable High Very high

Per pupil spending

Spending by area	District		Peer average 2018	State average 2018
	2017	2018		
Instruction	\$ 3,493	\$ 3,776	\$ 4,194	\$ 4,480
Administration	745	694	837	860
Plant operations	869	859	1,004	988
Food service	337	333	421	425
Transportation	471	508	418	388
Student support	502	589	643	693
Instruction support	483	484	480	462
Total operational	6,900	7,243	7,997	8,296
Land and buildings	65	48	570	827
Equipment	179	328	389	409
Interest	332	315	200	228
Other	60	60	69	169
Total nonoperational	636	751	1,228	1,633
Total per pupil spending	\$ 7,536	\$ 7,994	\$ 9,225	\$ 9,929

¹ See Appendix A for information such as districts included in each peer group and Appendix B for sources and methodology.

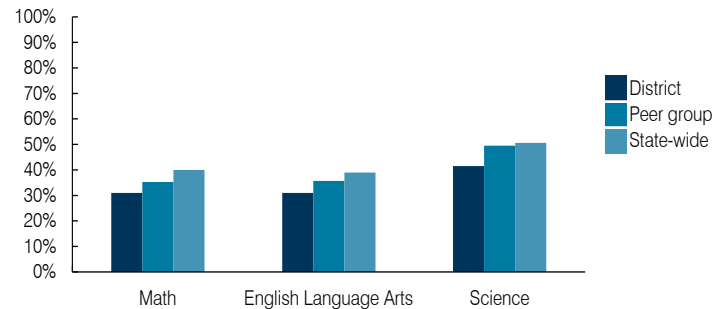
STUDENT ACHIEVEMENT, STUDENT AND TEACHER MEASURES, AND REVENUES

ADE-assigned school letter grades

Grade	Number of schools ²	Percentage of schools
A	1	10%
B	2	20%
C	5	50%
D	1	10%
F	1	10%

² Excludes schools for which letter grades were not published by ADE. See Appendix B for more information.

Students who passed State assessments



Student and teacher measures

Measure	District	Peer average	State average
Attendance rate	91%	93%	94%
Graduation rate (2017)	76%	86%	78%
Poverty rate (2017)	25%	22%	19%
Special education population	15%	13%	12%
Students per teacher	20.6	17.6	18.4
Average teacher salary	\$41,877	\$44,777	\$48,951
Amount from Prop 301	\$6,772	\$6,708	\$6,411
Average years of teacher experience	11.4	13.0	11.4
Percentage of teachers in first 3 years	28%	17%	19%

Per pupil revenues

Revenues by source	District		Peer average 2018	State average 2018
	2017	2018		
Federal	\$ 1,086	\$ 1,077	\$ 2,385	\$ 1,317
State	3,145	3,520	4,222	4,011
Local	4,420	4,324	3,291	4,592
Total per pupil revenues	\$ 8,651	\$ 8,921	\$ 9,898	\$ 9,920

Select revenues from common sources

Source	District	Peer average	State average
Equalization formula funding	\$ 5,670	\$ 5,820	\$ 5,443
Grants	1,154	1,197	1,552
Donations and tax credits	15	21	63

Select revenues from less common sources

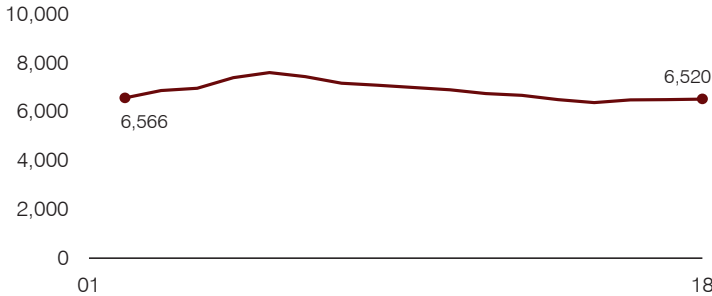
Source	District	Peer average	State average
Desegregation	\$ 0	\$ 0	1 of 17
Small school adjustment	0	0	0 of 17
Federal impact aid	0	0	6 of 17
Voter-approved levy increases	967	854	13 of 17

Instructional spending percentage

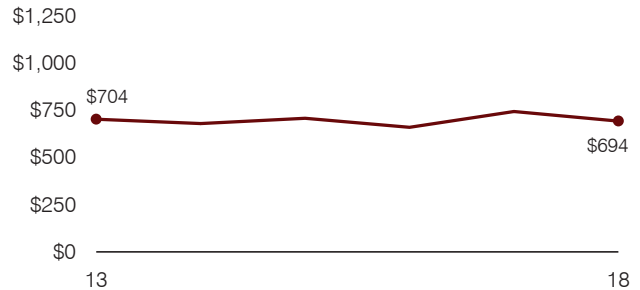
Year:	2001	2002	2003	2004	2005	2006	2007	2008	2009	2010	2011	2012	2013	2014	2015	2016	2017	2018
Percentage:	N/A	55.8	57.0	56.4	56.7	55.8	54.9	55.2	53.6	53.2	53.1	52.6	50.5	50.7	48.9	49.5	50.6	52.1

TRENDS AND FINANCIAL STRESS ASSESSMENT
Fiscal years as indicated

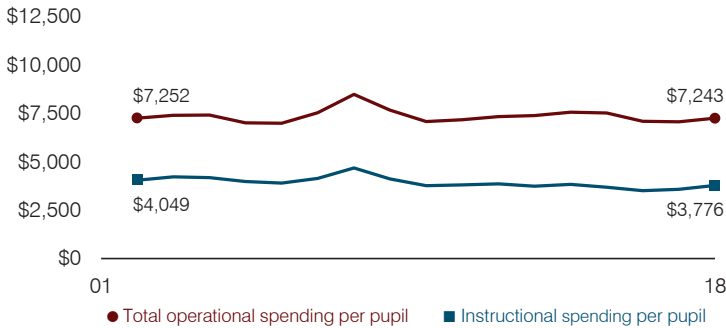
Students attending



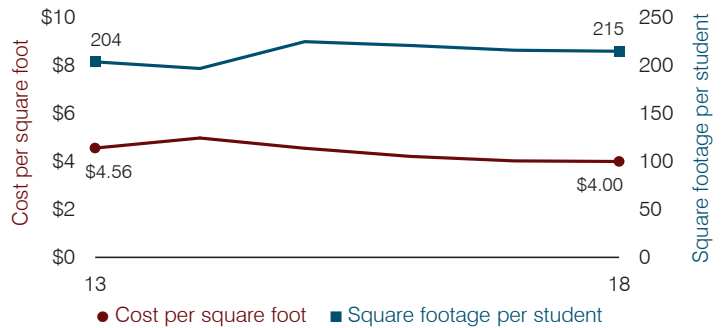
Administrative cost per pupil



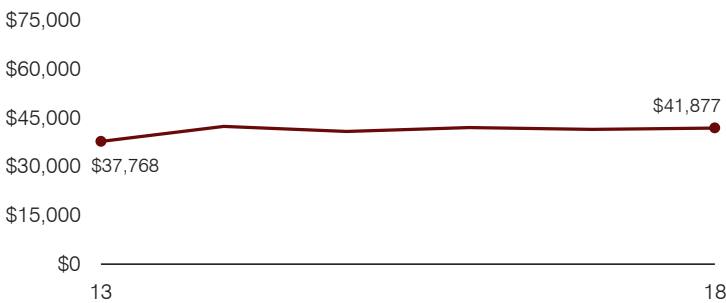
Total operational and instructional spending per pupil (inflation adjusted to 2018 dollars)



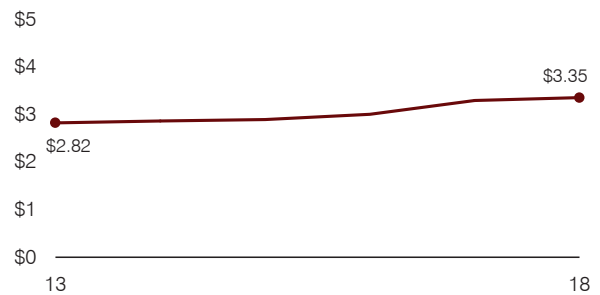
Plant cost per square foot and square footage per student



Average teacher salary



Food service cost per meal



Financial stress assessment

Overall financial stress level: **Low**

Measure: 2016 through 2018	Assessment
Change in number of district students	Steady
Spending exceeded operating/capital budgets	No overspending
Spending increase election results	No election held
Operating reserve percentage, Trend	7.8%, Increasing
Years of capital reserve held	More than 3 years
Current financial and internal control status	Marginally compliant

Low
Moderate
High

Transportation costs per mile and per rider

