

# Kingman Unified School District

Mohave County

Efficiency peer groups 4 and T-9, Achievement peer group 5

Legislative district(s): 5

District size, location:

Medium-Large, Town

Students attending:

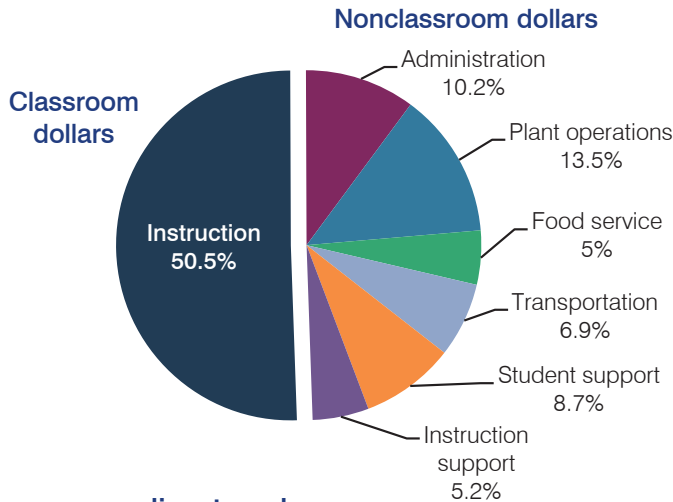
6,674

Number of schools:

12

## OPERATIONAL EFFICIENCY

### Spending by operational area



### 5-year spending trend

Total spending per pupil decreased by 5 percent. Spending in the classroom decreased from 55.2 to 50.5 percent. Overall, spending on plant operations increased substantially and spending on instruction support increased, while spending on student support decreased slightly. Spending on other nonclassroom areas varied year to year.

### Cost measures relative to peer averages

Operational area	Measure	District	Peer average	State average
Administration	Cost per pupil	\$704	\$764	\$746
	Students per administrator	64	67	67
Plant operations	Cost per square foot	\$4.56	\$5.34	\$6.03
	Square footage per student	204	176	153
Food service	Cost per meal equivalent	\$2.82	\$2.67	\$2.58
Transportation	Cost per mile	\$2.16	\$2.42	\$3.55
	Cost per rider	\$925	\$1,013	\$1,015

Very low Low Comparable High Very high

### Per pupil spending by operational area

	District		Peer average	State average	National average
	2012	2013	2013	2013	2011
<b>Total</b>	<b>\$6,723</b>	<b>\$6,884</b>	<b>\$7,187</b>	<b>\$7,496</b>	<b>\$10,658</b>
<b>Classroom dollars</b>	<b>3,536</b>	<b>3,480</b>	<b>3,779</b>	<b>4,031</b>	<b>6,520</b>
<b>Nonclassroom dollars:</b>	<b>3,187</b>	<b>3,404</b>	<b>3,408</b>	<b>3,465</b>	<b>4,138</b>
Administration	624	704	764	746	1,138
Plant operations	901	930	921	924	1,015
Food service	298	340	364	396	412
Transportation	455	472	394	369	452
Student support	593	599	561	582	593
Instruction support	316	359	404	448	528

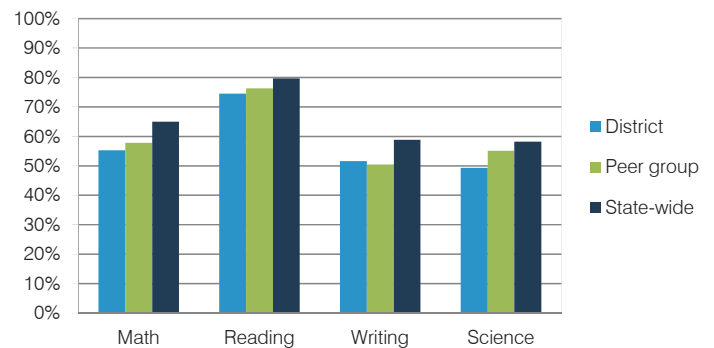
## STUDENT ACHIEVEMENT, TEACHER MEASURES, AND FINANCIAL ASSESSMENT

### ADE-reported district and school letter grades

District grade: **C**

Grade	Number of schools	Percentage of schools
A	1	8%
B	2	17%
C	4	33%
D	3	25%
F	0	0%
Not rated	2	17%

### Students who met state standards (AIMS)



### Student and teacher measures

Measure	District	Peer average	State average
Attendance rate	93%	94%	94%
Graduation rate (2012)	80%	83%	77%
Poverty rate (2012)	26%	24%	25%
Students per teacher	19.2	16.6	18.3
Average teacher salary	\$37,768	\$41,866	\$45,264
Amount from Proposition 301	\$4,497	\$4,192	\$3,784
Average years of teacher experience	10.6	11.7	10.9
Percentage of teachers in first 3 years	20%	16%	19%

### Financial stress assessment

Overall financial stress level: **Low**

Measure: 2011 through 2013

Assessment

Number of students attending district	Moderate decrease
Spending exceeded operating/capital budgets	No overspending
Spending increase election results	No election held
Operating reserve percentage (max. 4%), trend	3.4%, Decreasing
Years of capital reserve held	More than 3 years
Current financial and internal control status	Compliant

Stress level

