

# Kingman Unified School District

Mohave County

Efficiency peer groups 4 and T-8, Achievement peer group 5<sup>1</sup>

Legislative district(s): 5

District size, location:

Medium-large, Town

Students attending:

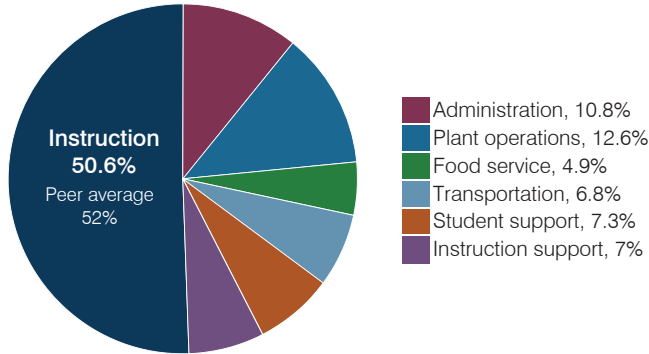
6,498

Number of schools:

11

## OPERATIONAL EFFICIENCY

### Spending by operational area



### Efficiency measures relative to peer averages

Operational area	Measure	District	Peer average	State average
Administration	Cost per pupil	\$745	\$844	\$844
	Students per administrative position	64	69	67
Plant operations	Cost per square foot	\$4.03	\$5.36	\$6.30
	Square footage per student	216	190	155
Food service	Cost per meal	\$3.29	\$3.00	\$2.88
Transportation	Cost per mile	\$2.00	\$2.95	\$3.84
	Cost per rider	\$604	\$1,037	\$1,198

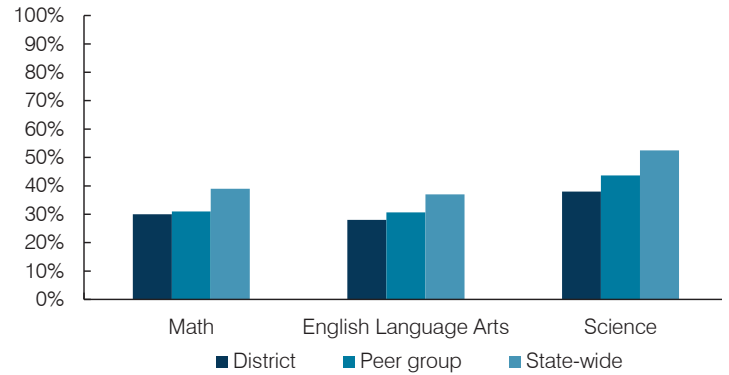
Very low   Low   Comparable   High   Very high

### Per pupil spending

Spending by area	District		Peer average 2017	State average 2017
	2016	2017		
Instruction	\$ 3,365	\$ 3,493	\$ 4,032	\$ 4,377
Administration	661	745	844	844
Plant operations	931	869	987	977
Food service	380	337	409	422
Transportation	467	471	414	381
Student support	522	502	607	679
Instruction support	478	483	481	461
<b>Total operational</b>	<b>\$ 6,804</b>	<b>\$ 6,900</b>	<b>\$ 7,774</b>	<b>\$ 8,141</b>
Land and buildings	\$ 199	\$ 65	\$ 346	\$ 691
Equipment	107	179	390	424
Interest	431	332	164	236
Other	53	60	77	161
<b>Total nonoperational</b>	<b>\$ 790</b>	<b>\$ 636</b>	<b>\$ 977</b>	<b>\$ 1,512</b>
<b>Total per pupil spending</b>	<b>\$ 7,594</b>	<b>\$ 7,536</b>	<b>\$ 8,751</b>	<b>\$ 9,653</b>

## STUDENT ACHIEVEMENT, STUDENT AND TEACHER MEASURES, AND REVENUES

### Students who passed state assessments



### Student and teacher measures

Measure	District	Peer average	State average
Attendance rate	91%	93%	94%
Graduation rate (2016)	78%	85%	80%
Poverty rate (2016)	27%	24%	22%
Special education population	14%	13%	12%
Students per teacher	20.6	17.0	18.5
Average teacher salary	\$41,446	\$44,553	\$48,372
Amount from Prop 301	\$5,706	\$5,512	\$5,840
Average years of teacher experience	11.5	12.8	11.3
Percentage of teachers in first 3 years	27%	16%	19%

### Per pupil revenues

Revenues by source	District		Peer average 2017	State average 2017
	2016	2017		
Federal	\$ 1,172	\$ 1,086	\$ 2,260	\$ 1,318
State	2,902	3,145	4,086	3,831
Local	5,334	4,420	3,104	4,443
<b>Total per pupil revenues</b>	<b>\$ 9,408</b>	<b>\$ 8,651</b>	<b>\$ 9,450</b>	<b>\$ 9,592</b>

#### Select revenues from common sources

	District	Peer average	State average
Equalization formula funding	\$ 5,560	\$ 5,670	\$ 5,373
Amount from Prop 123	233	238	233
Prop 123 additional funding	45	46	46
Grants	1,323	1,154	1,374
Donations and tax credits	15	15	56

#### Select revenues from less common sources

	District	Peer average	Number of peers receiving
Desegregation	\$ 0	\$ 0	1 of 18
Small school adjustment	0	0	0 of 18
Federal impact aid	0	0	7 of 18
Voter-approved levy increases	1,167	967	14 of 18

<sup>1</sup> See Appendix A for information such as districts included in each peer group and Appendix B for sources and methodology.

## Instructional spending percentage

Year:	2001	2002	2003	2004	2005	2006	2007	2008	2009	2010	2011	2012	2013	2014	2015	2016	2017
Percentage:	N/A	55.8	57.0	56.4	56.7	55.8	54.9	55.2	53.6	53.2	53.1	52.6	50.5	50.7	48.9	49.5	50.6

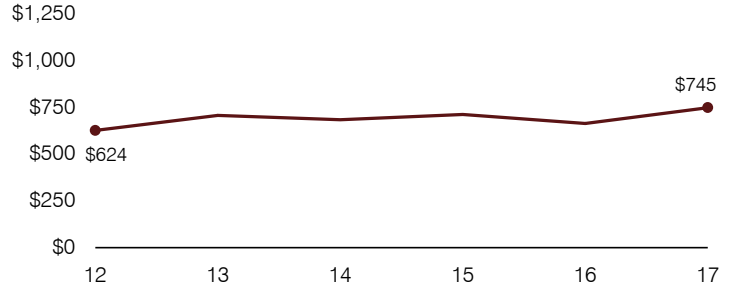
## OPERATIONAL TRENDS AND FINANCIAL STRESS ASSESSMENT

Fiscal years as indicated

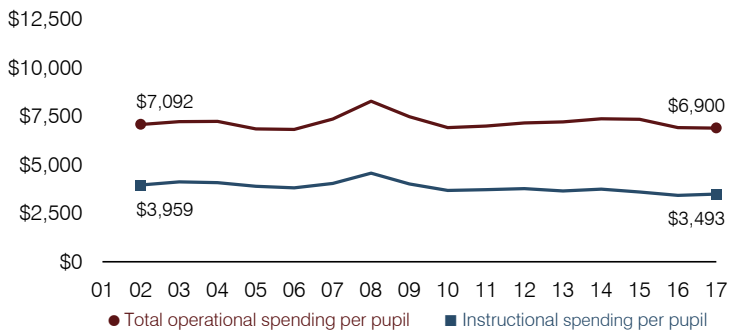
### 5-year spending trend (2012 through 2017)

Total operational spending per pupil, adjusted for inflation, decreased by 4 percent. The percentage of dollars spent on instruction varied year to year, decreasing overall from 52.6 to 50.6 percent. Overall, as a percentage of total operational spending, instruction support increased substantially, administration increased, and food service increased slightly, while student support decreased.

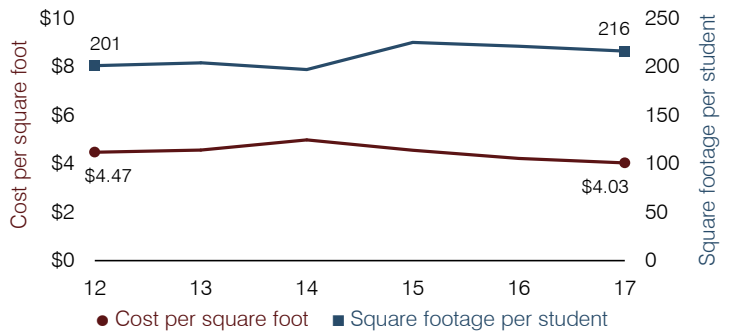
### Administrative cost per pupil



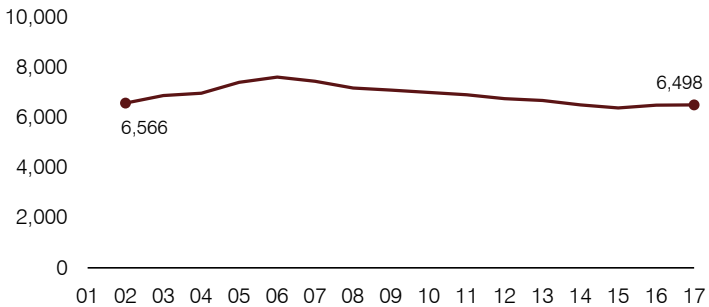
### Total operational and instructional spending per pupil (inflation adjusted to 2017 dollars)



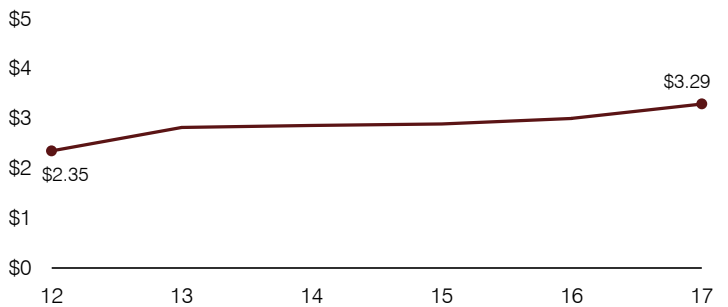
### Plant cost per square foot and square footage per student



### Students attending



### Food service cost per meal



### Financial stress assessment

Overall financial stress level:

**Low**

Measure: 2015 through 2017

Assessment

Change in number of district students	Steady
Spending exceeded operating/capital budgets	No overspending
Spending increase election results	No election held
Operating reserve percentage, Trend	4.5%, Increasing
Years of capital reserve held	More than 3 years
Current financial and internal control status	Marginally compliant

Low

Moderate

High

### Transportation costs per mile and per rider

