

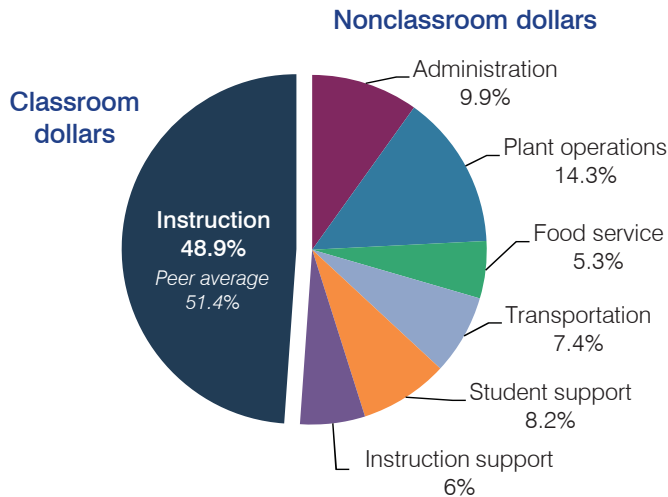
Kingman Unified School District

Mohave County
 Efficiency peer groups 4 and T-9, Achievement peer group 6
 Legislative district(s): 5

District size, location: Medium-large, Town
 Students attending: 6,377
 Number of schools: 11

OPERATIONAL EFFICIENCY

Spending by operational area



Efficiency measures relative to peer averages

Operational area	Measure	District	Peer average	State average
Administration	Cost per pupil	\$709	\$798	\$780
	Students per administrative position	59	65	67
Plant operations	Cost per square foot	\$4.55	\$5.52	\$6.09
	Square footage per student	225	191	153
Food service	Cost per meal equivalent	\$2.89	\$2.80	\$2.79
Transportation	Cost per mile	\$2.21	\$2.13	\$3.66
	Cost per rider	\$833	\$958	\$1,071

Very low
Low
Comparable
High
Very high

Per pupil spending

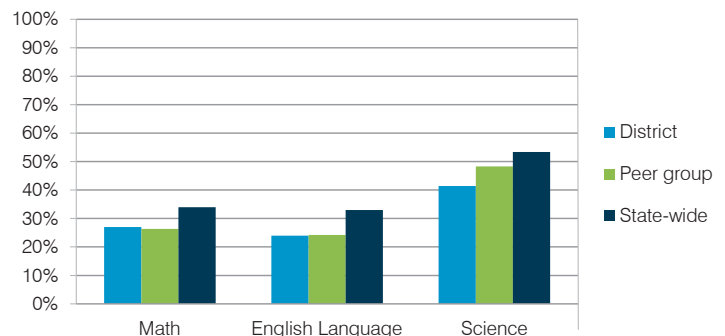
Spending by area	District		Peer average	State average
	2014	2015	2015	2015
Instruction	\$ 3,629	\$ 3,510	\$ 3,941	\$ 4,105
Administration	681	709	798	780
Plant operations	979	1,024	1,045	930
Food service	380	384	419	417
Transportation	492	529	411	371
Student support	621	586	597	613
Instruction support	370	434	479	442
Total operational	\$ 7,152	\$ 7,176	\$ 7,690	\$ 7,658
Land and buildings	\$ 65	\$ 94	\$ 382	\$ 641
Equipment	364	316	281	383
Interest	482	466	200	225
Other	38	48	59	150
Total nonoperational	\$ 949	\$ 924	\$ 922	\$ 1,399
Total per pupil spending	\$ 8,101	\$ 8,100	\$ 8,612	\$ 9,057

STUDENT AND TEACHER MEASURES, FINANCIAL ASSESSMENT, AND REVENUE

Student and teacher measures

Measure	District	Peer average	State average
Attendance rate	93%	93%	94%
Graduation rate (2014)	70%	80%	76%
Poverty rate (2014)	29%	31%	23%
Students per teacher	20.3	15.8	18.6
Average teacher salary	\$40,837	\$42,614	\$46,008
Average years of teacher experience	12.1	12.4	11.0
Percentage of teachers in first 3 years	19%	20%	20%

Students who met state standards



Financial stress assessment

Overall financial stress level: **Moderate**

Measure: 2013 through 2015	Assessment
Change in number of district students	Moderate decrease
Spending exceeded operating/capital budgets	No overspending
Spending increase election results	No election held
Operating reserve percentage (max. 4%), trend	2.5%, Decreasing
Years of capital reserve held	More than 3 years
Current financial and internal control status	Marginally compliant

Low
Moderate
High

Per pupil revenues

Revenues by source	District		Peer average	State average
	2014	2015	2015	2015
Federal	\$ 1,136	\$ 1,006	\$ 2,889	\$ 1,299
State	2,325	2,398	3,860	3,517
Local	4,960	4,754	2,930	4,248
Total revenues per pupil	\$ 8,421	\$ 8,158	\$ 9,679	\$ 9,064
Select revenues from common sources				
Equalization formula funding	\$ 5,657	\$ 5,476	\$ 5,185	\$ 5,303
Grants	1,221	1,130	1,573	1,167
Donations and tax credits	28	18	48	78
Select revenues from less common sources				
			Number of peers receiving	
Desegregation	\$ 0	\$ 0	1 of 18	
Small school adjustment	0	0	0 of 18	
Federal impact aid	0	0	7 of 18	
Voter-approved levy increases	905	1,017	15 of 18	

Kingman USD—page 2

Classroom dollar percentage

Year:	2001	2002	2003	2004	2005	2006	2007	2008	2009	2010	2011	2012	2013	2014	2015
Percentage:	N/A	55.8	57.0	56.4	56.7	55.8	54.9	55.2	53.6	53.2	53.1	52.6	50.5	50.7	48.9

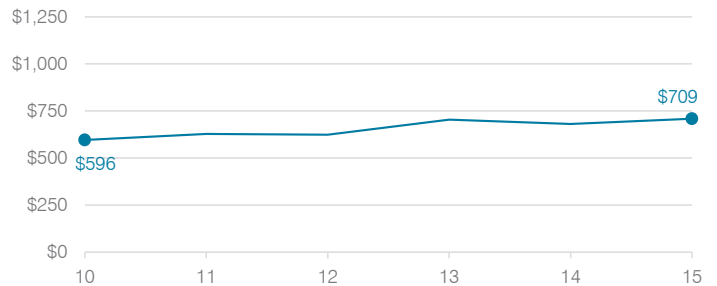
OPERATIONAL TRENDS

Fiscal years as indicated

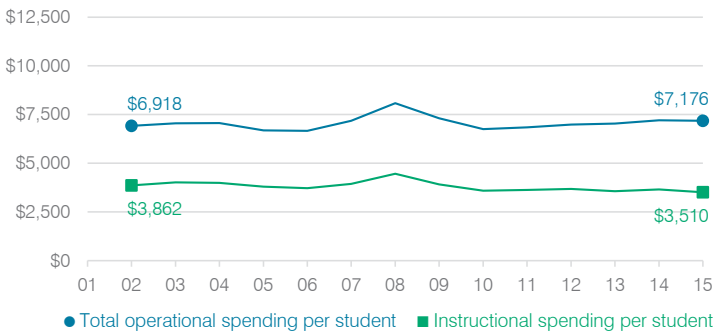
5-year spending trend (2010 through 2015)

Total operational spending per pupil, adjusted for inflation, increased by 6 percent. The percentage of dollars spent in the classroom decreased from 53.2 to 48.9 percent. As a percentage of total operational spending, plant operations, food service, and instruction support increased. Transportation increased slightly, while student support decreased and administration varied year to year.

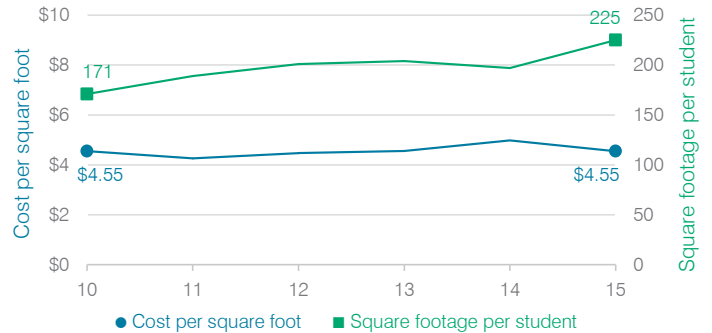
Administrative cost per student



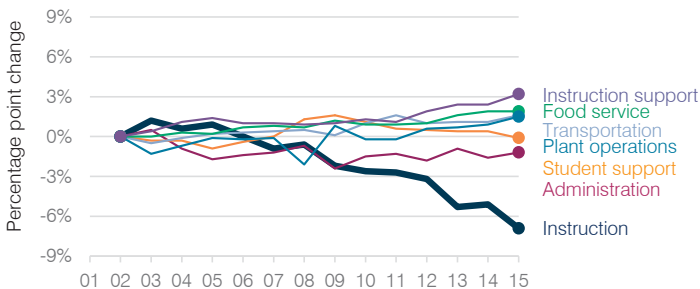
Total operational and instructional spending per student (inflation adjusted to 2015 dollars)



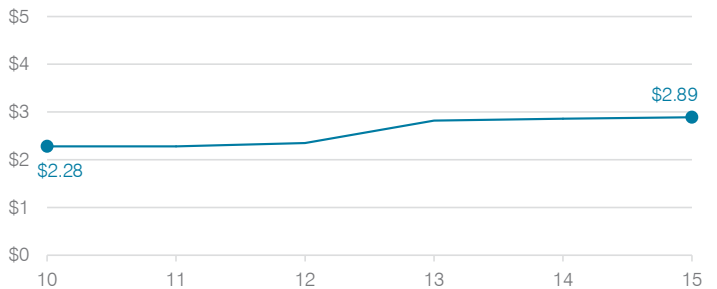
Plant cost per square foot and square footage per student



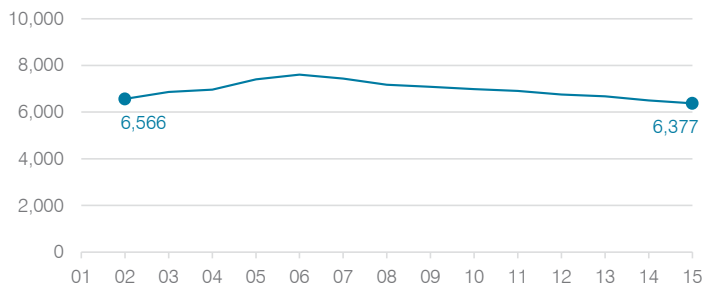
Changes in operational spending percentages



Food service cost per meal



Students attending



Transportation costs per mile and per rider

