

Classroom Dollars and Proposition 301 Results

Kirkland Elementary School District

Yavapai County

District size: Very Small
 Students attending: 70
 Number of schools: 1
 Number of certified teachers: 5

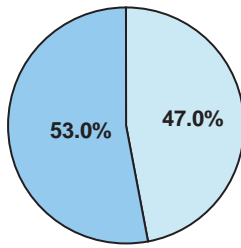
Classroom Dollars

Fiscal year 2006 averages per pupil

District

State

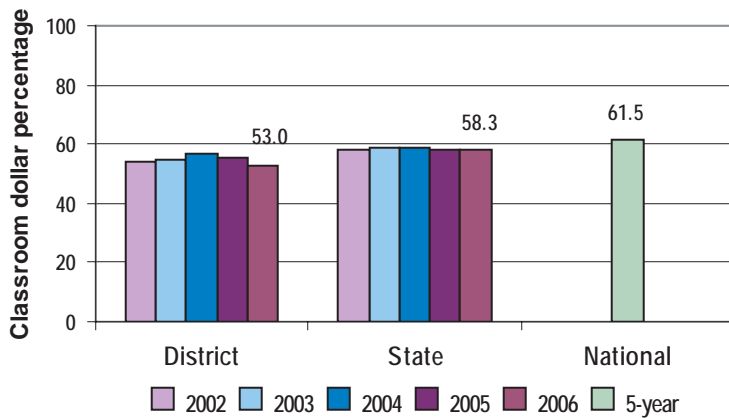
Classroom
\$5,024
\$3,981



Nonclassroom
\$4,451
\$2,852

Total
\$9,475
\$6,833

5-year comparison



Expenditures by function

	District					State 2006	National 5-year
	2002	2003	2004	2005	2006		
Classroom dollars	53.9	55.0	56.7	55.6	53.0	58.3	61.5
Nonclassroom dollars:							
Administration	21.2	19.8	16.7	17.1	18.8	9.4	11.0
Plant operations	7.2	8.0	10.3	8.6	9.1	11.2	9.6
Food service	9.0	8.5	8.5	8.2	7.8	4.7	3.9
Transportation	8.7	7.7	6.3	6.1	7.4	4.2	4.0
Student support		1.0	1.4	3.6	3.1	7.2	5.1
Instruction support			0.1	0.8	0.8	4.8	4.7
Other						0.2	0.2

Comparative Information

	District			State 2006
	2004	2005	2006	
Student/teacher ratio	14.8	13.0	14.0	17.7
Average teacher salary	\$33,801	\$32,416	\$36,005	\$42,967
Average years' experience	8.8	6.8	8.8	8.3

Classroom dollar ranking: 150 of 229 districts.

Proposition 301

District-reported 2006 results

Teacher pay

- On average, each teacher earned an additional \$5,820 in salary.

Performance

- The District accomplished its goals, which were based on district performance.
- Goals were linked to student achievement on standardized tests, student attendance, and the results of parent-student satisfaction surveys.

Menu

- Monies were used to compensate teachers for performing additional duties, including acting as testing coordinator, technology advisor, ELL coordinator, language arts director, and math and science liaison.