

# Classroom Dollars and Proposition 301 Results

## Kirkland Elementary School District

Yavapai County

District size: Very Small  
 Students attending: 62  
 Number of schools: 1  
 Number of certified teachers: 5

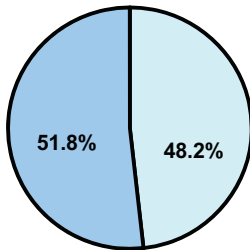
### Classroom Dollars

Fiscal year 2008 averages per pupil

District

State

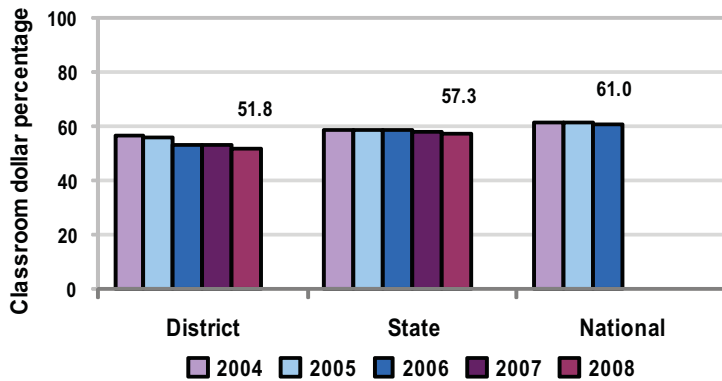
Classroom  
 \$6,827  
 \$4,480



Nonclassroom  
 \$6,346  
 \$3,333

Total  
 \$13,173  
 \$7,813

5-year comparison



### Expenditures by function

	District					State 2008	National 2006
	2004	2005	2006	2007	2008		
Classroom dollars	56.7	55.6	53.0	52.9	51.8	57.3	61.0
Nonclassroom dollars:							
Administration	16.7	17.1	18.8	18.0	17.5	9.2	10.8
Plant operations	10.3	8.6	9.1	10.1	10.9	11.3	9.9
Food service	8.5	8.2	7.8	7.0	5.5	4.8	3.8
Transportation	6.3	6.1	7.4	8.0	9.8	4.4	4.2
Student support	1.4	3.6	3.1	3.3	4.1	7.4	5.2
Instruction support	0.1	0.8	0.8	0.7	0.4	5.4	4.9
Other						0.2	0.2

### Comparative Information

	District			State 2008
	2006	2007	2008	
Student/teacher ratio	14.0	11.9	12.3	17.3
Average teacher salary	\$36,005	\$41,585	\$44,841	\$44,967
Average years' experience	8.8	9.8	8.9	8.1

Classroom dollar ranking: 160 of 230 districts.

### Proposition 301

#### District-reported 2008 results

##### Teacher pay

- On average, each teacher earned an additional \$6,482 in salary.

##### Performance

- The District accomplished its goals, which were similar to the prior fiscal year's goals and were based on district and individual performance.
- The school met Adequate Yearly Progress objectives.
- All students demonstrated at least 1 year's progress on standardized tests.
- Teachers received acceptable ratings on performance evaluations.
- Of the parents and students responding to a survey, 95 percent were satisfied with the District.

##### Menu

- Teachers could earn additional compensation by performing additional duties as assigned by the district administrator.