

# Classroom Dollars and Proposition 301 Results

## Kirkland Elementary School District

Yavapai County

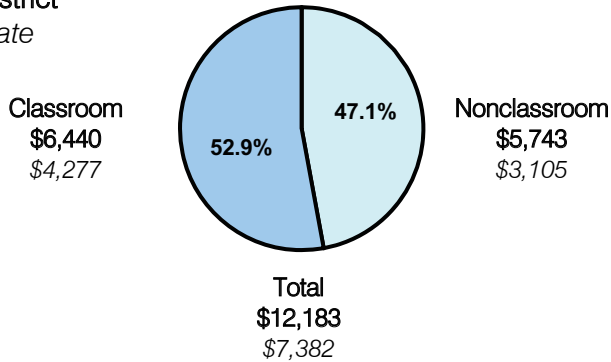
District size: Very Small  
 Students attending: 60  
 Number of schools: 1  
 Number of certified teachers: 5

### Classroom Dollars

Fiscal year 2007 averages per pupil

District

State

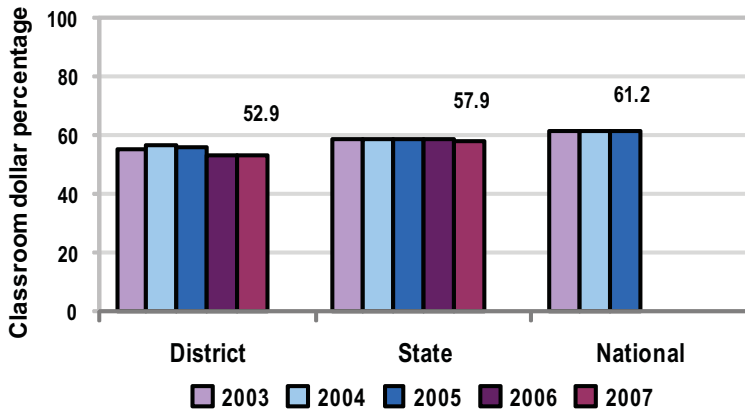


### Comparative Information

|                           | District |          |          | State    |
|---------------------------|----------|----------|----------|----------|
|                           | 2005     | 2006     | 2007     | 2007     |
| Student/teacher ratio     | 13.0     | 14.0     | 11.9     | 17.4     |
| Average teacher salary    | \$32,416 | \$36,005 | \$41,585 | \$43,833 |
| Average years' experience | 6.8      | 8.8      | 9.8      | 8.1      |

Classroom dollar ranking: 155 of 229 districts.

### 5-year comparison



### Expenditures by function

|                       | District |      |      |      |      | State | National |
|-----------------------|----------|------|------|------|------|-------|----------|
|                       | 2003     | 2004 | 2005 | 2006 | 2007 | 2007  | 2005     |
| Classroom dollars     | 55.0     | 56.7 | 55.6 | 53.0 | 52.9 | 57.9  | 61.2     |
| Nonclassroom dollars: |          |      |      |      |      |       |          |
| Administration        | 19.8     | 16.7 | 17.1 | 18.8 | 18.0 | 9.5   | 11.0     |
| Plant operations      | 8.0      | 10.3 | 8.6  | 9.1  | 10.1 | 11.3  | 9.6      |
| Food service          | 8.5      | 8.5  | 8.2  | 7.8  | 7.0  | 4.7   | 3.9      |
| Transportation        | 7.7      | 6.3  | 6.1  | 7.4  | 8.0  | 4.3   | 4.1      |
| Student support       | 1.0      | 1.4  | 3.6  | 3.1  | 3.3  | 7.3   | 5.2      |
| Instruction support   |          | 0.1  | 0.8  | 0.8  | 0.7  | 4.8   | 4.8      |
| Other                 |          |      |      |      |      | 0.2   | 0.2      |

### Proposition 301

#### District-reported 2007 results

##### Teacher pay

- On average, each teacher earned an additional \$5,185 in salary.

##### Performance

- The District accomplished its goals, which were based on district performance.
- The District's school was labeled as "Highly Performing" by ADE for AZ LEARNS.
- All students demonstrated at least 1 year's progress on standardized tests.
- All teachers participated in teacher development activities and achieved highly qualified status.
- The District achieved its student attendance goal.

##### Menu

- Teachers could earn additional compensation by performing additional duties as assigned by the district administrator.