

Classroom Dollars and Proposition 301 Results

Kyrene Elementary School District

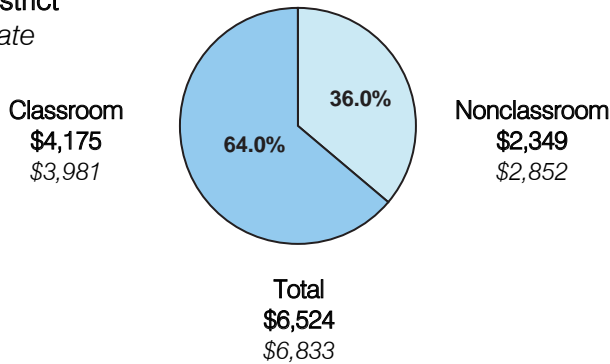
Maricopa County

District size: Large
 Students attending: 17,462
 Number of schools: 25
 Number of certified teachers: 1,050

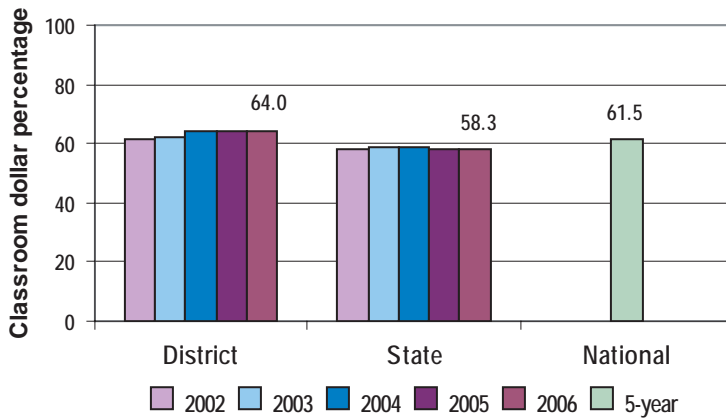
Classroom Dollars

Fiscal year 2006 averages per pupil

District
 State



5-year comparison



Expenditures by function

	Percentage					State 2006	National 5-year
	2002	2003	2004	2005	2006		
Classroom dollars	61.2	61.9	64.4	64.3	64.0	58.3	61.5
Nonclassroom dollars:							
Administration	9.1	8.6	7.6	7.5	7.3	9.4	11.0
Plant operations	10.8	11.1	10.3	9.8	10.1	11.2	9.6
Food service	5.1	4.9	4.5	4.5	4.3	4.7	3.9
Transportation	3.5	3.1	2.9	2.9	3.1	4.2	4.0
Student support	6.1	6.2	6.2	6.5	6.6	7.2	5.1
Instruction support	4.2	4.2	4.1	4.5	4.6	4.8	4.7
Other						0.2	0.2

Comparative Information

	District			State 2006
	2004	2005	2006	
Student/teacher ratio	17.3	17.0	16.6	17.7
Average teacher salary	\$41,631	\$42,823	\$45,734	\$42,967
Average years' experience	9.6	9.4	9.4	8.3

Classroom dollar ranking: 8 of 229 districts.

Proposition 301

District-reported 2006 results

Teacher pay

- On average, each teacher, librarian, speech pathologist, audiologist, and counselor earned an additional \$4,815 in salary.

Performance

- The District accomplished most of its goals, which were the same as the prior fiscal year's goals and were based on district performance.
- Goals were linked to student achievement on standardized tests and district assessments, and the results of a parent satisfaction survey.

Menu

- Monies were used primarily to increase eligible employee compensation.
- The District also continued to use monies to reduce class sizes at schools where class sizes exceeded district guidelines, and to employ teachers and instructional aides for AIMS intervention.
- Teachers participated in professional development activities to increase their knowledge of instructional strategies to help increase overall student achievement.
- Monies were also used for dropout prevention programs to address students' academic difficulties, attendance, and discipline.