

Kyrene Elementary School District

Maricopa County

Efficiency peer groups 7 and T-4, Achievement peer group 12

Legislative district(s): 18 and 27

District size, location:

Students attending:

Number of schools:

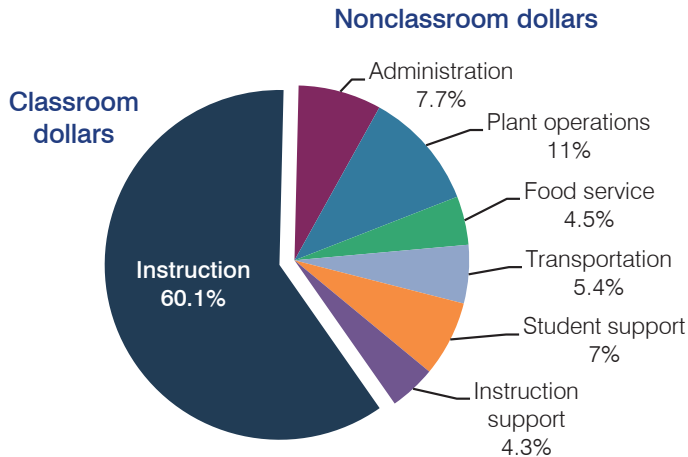
Large, City

16,875

25

OPERATIONAL EFFICIENCY

Spending by operational area



5-year spending trend

Total spending per pupil decreased by 10 percent. Spending in the classroom decreased from 63.3 to 60.1 percent. Overall, spending on transportation and student support increased and spending on plant operations increased slightly. Spending on other nonclassroom areas remained stable.

Cost measures relative to peer averages

Operational area	Measure	District	Peer average	State average
Administration	Cost per pupil	\$508	\$664	\$746
	Students per administrator	79	76	67
Plant operations	Cost per square foot	\$4.74	\$6.19	\$6.03
	Square footage per student	153	130	153
Food service	Cost per meal equivalent	\$2.97	\$2.52	\$2.58
Transportation	Cost per mile	\$3.29	\$3.41	\$3.55
	Cost per rider	\$952	\$1,047	\$1,015

Very low Low Comparable High Very high

Per pupil spending by operational area

	District		Peer average	State average	National average
	2012	2013	2013	2013	2011
Total	\$6,841	\$6,592	\$7,109	\$7,496	\$10,658
Classroom dollars	4,121	3,964	3,883	4,031	6,520
Nonclassroom dollars:	2,720	2,628	3,226	3,465	4,138
Administration	475	508	664	746	1,138
Plant operations	882	723	766	924	1,015
Food service	318	293	501	396	412
Transportation	353	358	298	369	452
Student support	416	463	520	582	593
Instruction support	276	283	477	448	528

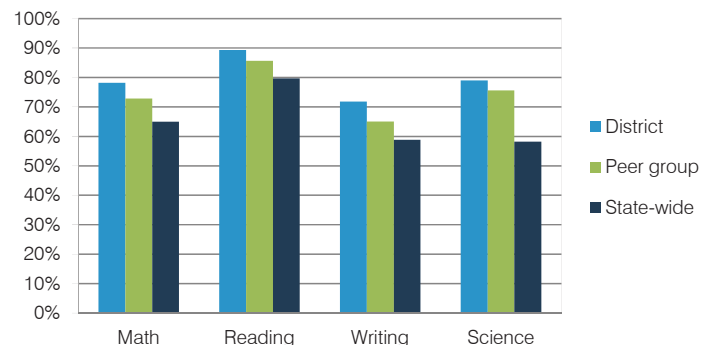
STUDENT ACHIEVEMENT, TEACHER MEASURES, AND FINANCIAL ASSESSMENT

ADE-reported district and school letter grades

District grade: **A**

Grade	Number of schools	Percentage of schools
A	16	64%
B	9	36%
C	0	0%
D	0	0%
F	0	0%
Not rated	0	0%

Students who met state standards (AIMS)



Student and teacher measures

Measure	District	Peer average	State average
Attendance rate	96%	95%	94%
Graduation rate (2012)	N/A	N/A	N/A
Poverty rate (2012)	10%	13%	25%
Students per teacher	18.2	18.9	18.3
Average teacher salary	\$47,821	\$45,822	\$45,264
Amount from Proposition 301	\$2,620	\$3,641	\$3,784
Average years of teacher experience	13.0	10.4	10.9
Percentage of teachers in first 3 years	12%	16%	19%

Financial stress assessment

Overall financial stress level: **Low**

Measure: 2011 through 2013

Assessment

Number of students attending district	Steady
Spending exceeded operating/capital budgets	No overspending
Spending increase election results	Voter-approved
Operating reserve percentage (max. 4%), trend	3.9%, Steady
Years of capital reserve held	More than 3 years
Current financial and internal control status	Compliant

Stress level

