

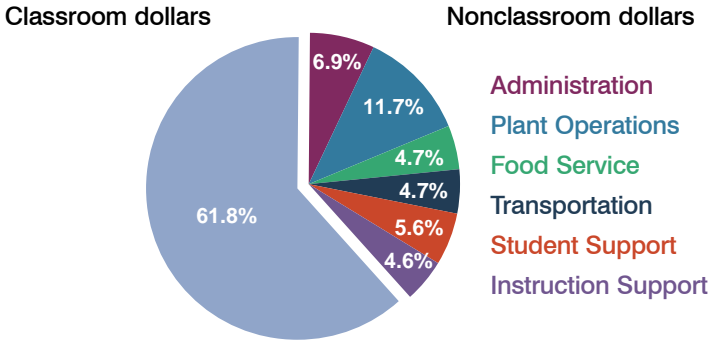
Kyrene Elementary School District

Maricopa County
Peer groups: Efficiency Group 8, Achievement Group 13
Legislative district(s): 17 and 20

District size: Large
Students attending: 16,876
Number of schools: 25

OPERATIONAL EFFICIENCY

Spending by operational area



5-year trend

Total spending per pupil increased by 3 percent. Spending in the classroom decreased significantly from 64 to 61.8 percent. Spending on plant operations and transportation increased, while spending on other nonclassroom areas remained stable.

District's cost measures relative to peer group

Operational Area	Measure	District	Peer Average	State Average
Administration	Cost per pupil	\$463	\$648	\$728
	Students per administrator	77	71	66
Plant Operations	Cost per square foot	\$5.27	\$6.32	\$6.10
	Square footage per student	150	130	152
Food Service	Cost per meal equivalent	\$2.84	\$2.29	\$2.45
Transportation	Cost per mile	\$3.30	\$4.66	\$3.39
	Miles per rider	252	180	283

Very low Low Comparable High Very high

Per-pupil spending by operational area

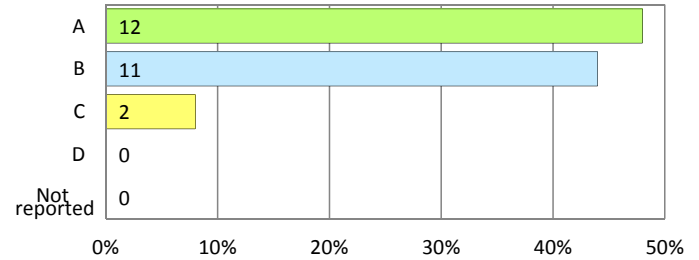
	District		Peer 2011	State 2011	National 2009
	2010	2011			
Total	\$7,121	\$6,736	\$7,201	\$7,485	\$10,591
Classroom dollars	\$4,340	\$4,160	\$4,033	\$4,098	\$6,456
Nonclassroom dollars:	\$2,781	\$2,576	\$3,168	\$3,387	\$4,135
Administration	504	463	648	728	1,147
Plant Operations	797	790	789	927	1,033
Food Service	363	315	467	375	404
Transportation	321	318	273	352	443
Student Support	458	380	498	571	573
Instruction Support	338	310	493	434	535

STUDENT ACHIEVEMENT AND TEACHER INFORMATION

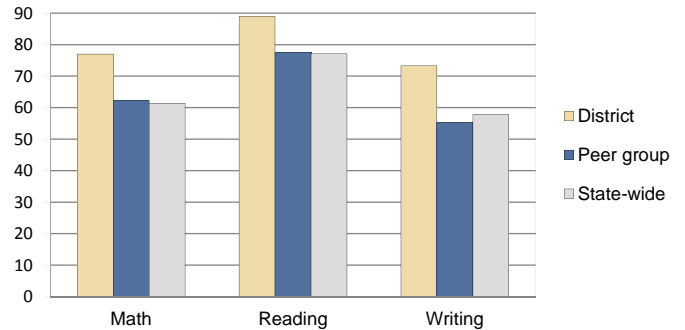
District and school letter grades

District grade: **B**

School grades (number and percentage):



Percentage of students meeting state standards (AIMS)



Student and teacher information

Measure	District	Peer Average	State Average
Attendance rate	96%	95%	95%
Graduation rate (2010)	N/A	N/A	N/A
Poverty rate (2010)	9%	14%	22%
Students per teacher	17.3	18.7	18.1
Average teacher salary	\$48,693	\$42,467	\$45,637
Average years of experience	12.6	7.8	10.9
Percent of teachers in first 3 years	8%	27%	16%

Proposition 301 pay, goals, and results

Average additional salary earned by teachers: \$2,105

Type of goal	Goal met?
Student achievement	▀
Dropout/graduation rates	-
Student attendance	-
Parent/student satisfaction	■
Teacher attendance	-
Teacher professional development	-
Teacher evaluations	-
Tutoring	-
Other	-

■ = yes, □ = no, ▀ = partially, and - = no goal set