

# Kyrene Elementary School District

Maricopa County  
Operational peer group: H  
Legislative districts: 17, 20

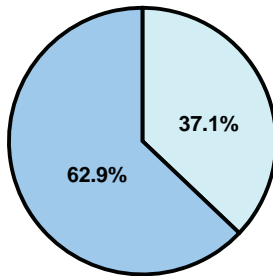
District size: Large  
Students attending: 16,977  
Number of schools: 25

## OPERATIONAL EFFICIENCY

### Average per-pupil spending

District  
State

**Classroom**  
\$4,635  
\$4,497



**Nonclassroom**  
\$2,728  
\$3,411

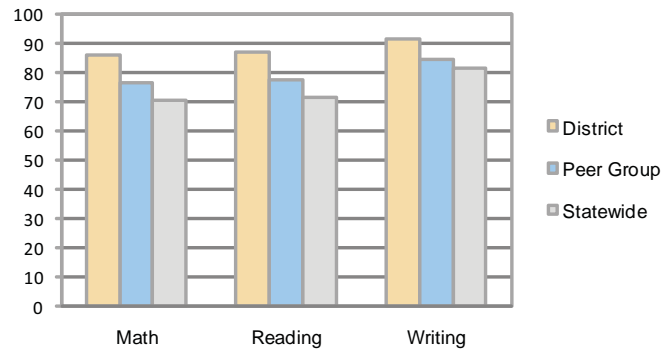
**Total**  
\$7,363  
\$7,908

### 5-year trend

Total spending per pupil increased by 28 percent. Spending in the classroom was fairly stable and decreased overall from 64.4 to 62.9 percent. Spending on transportation increased, while spending in other nonclassroom areas remained stable.

## STUDENT ACHIEVEMENT AND TEACHER INFORMATION

### Percentage of students meeting state standards (AIMS)



### Adequate Yearly Progress (AYP) toward federal goals

25 schools met all applicable AYP objectives for NCLB.

### District's cost measures relative to peer group

Operational Area	Measure	District	Peer Average	State Average
Administration	Cost per pupil	\$561	\$705	\$729
	Students per administrator	72	67	66
Plant Operations	Cost per square foot	\$5.11	\$6.62	\$6.40
	Square footage per student	148	120	144
Food Service	Cost per meal equivalent	\$3.27	\$2.44	\$2.53
Transportation	Cost per mile	\$3.47	\$4.77	\$3.36
	Miles per rider	262	197	271

Very Low   Low   Comparable   High   Very High

### Student and teacher information

Measure	District	Peer average	State average
Attendance rate	96%	96%	95%
Graduation rate (2008)	N/A	85%	75%
Poverty rate	5%	13%	19%
Student/teacher ratio	15.7	17.3	17.1
Average teacher salary	\$49,060	\$45,833	\$45,209
Average years' experience	10.9	9.1	8.3
Percent of teachers in first 3 years	17%	27%	16%

### Proposition 301

#### Teacher pay

On average, each teacher earned an additional \$4,448 in salary, and each librarian, speech pathologist, counselor, technology, and teacher specialist earned between \$1,590 and \$4,781.

#### Performance pay plan goals and results

Type of goal	Goal met?
Student achievement	▲
Dropout/ graduation rates	
Student attendance	
Parent/student satisfaction	■
Teacher attendance	
Teacher professional development	
Teacher evaluations	
Tutoring	
Other	

■ = yes, □ = no, and ▲ = partially

### Per-pupil spending by function

	District		Peer 2009	State 2009	National 2007
	2008	2009			
<b>Total</b>	<b>\$7,326</b>	<b>\$7,363</b>	<b>\$7,808</b>	<b>\$7,908</b>	<b>\$9,683</b>
<b>Classroom dollars</b>	<b>\$4,638</b>	<b>\$4,635</b>	<b>\$4,486</b>	<b>\$4,497</b>	<b>\$5,903</b>
<b>Nonclassroom dollars:</b>	<b>\$2,688</b>	<b>\$2,728</b>	<b>\$3,322</b>	<b>\$3,411</b>	<b>\$3,780</b>
Administration	539	561	705	729	1,050
Plant Operations	759	756	786	920	951
Food Service	336	346	494	382	369
Transportation	286	299	272	343	406
Student Support	428	436	536	594	512
Instruction Support	340	330	529	431	470
Other	0	0	0	12	22