

# Classroom Dollars and Proposition 301 Results

## Kyrene Elementary School District

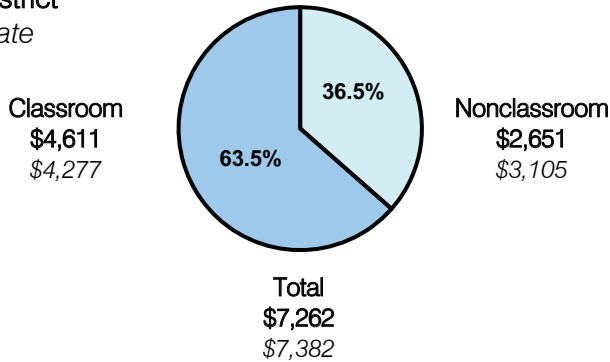
Maricopa County

District size: Large  
 Students attending: 16,336  
 Number of schools: 25  
 Number of certified teachers: 1,036

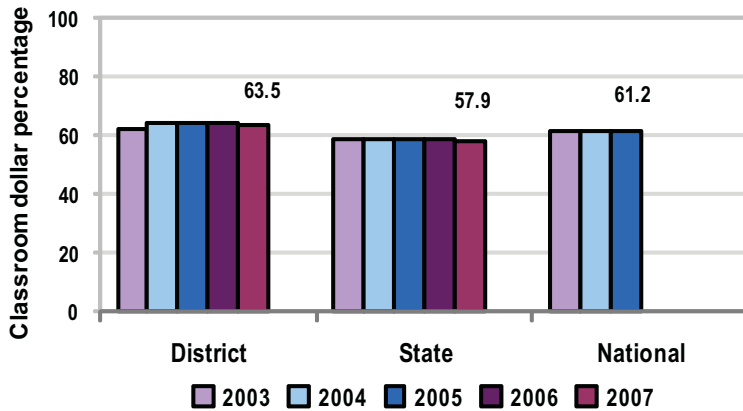
### Classroom Dollars

Fiscal year 2007 averages per pupil

District  
 State



5-year comparison



Expenditures by function

	Percentage					State 2007	National 2005
	2003	2004	2005	2006	2007		
Classroom dollars	61.9	64.4	64.3	64.0	63.5	57.9	61.2
Nonclassroom dollars:							
Administration	8.6	7.6	7.5	7.3	7.4	9.5	11.0
Plant operations	11.1	10.3	9.8	10.1	10.1	11.3	9.6
Food service	4.9	4.5	4.5	4.3	4.3	4.7	3.9
Transportation	3.1	2.9	2.9	3.1	3.5	4.3	4.1
Student support	6.2	6.2	6.5	6.6	6.6	7.3	5.2
Instruction support	4.2	4.1	4.5	4.6	4.6	4.8	4.8
Other						0.2	0.2

### Comparative Information

	District			State 2007
	2005	2006	2007	
Student/teacher ratio	17.0	16.6	15.8	17.4
Average teacher salary	\$42,823	\$45,734	\$45,615	\$43,833
Average years' experience	9.4	9.4	9.3	8.1

Classroom dollar ranking: 11 of 229 districts.

### Proposition 301

#### District-reported 2007 results

##### Teacher pay

- On average, each teacher, librarian, speech pathologist, and counselor earned an additional \$4,300 in salary.

##### Performance

- The District accomplished most of its goals, which were the same as the prior fiscal year's goals and were based on district performance.
- Goals were linked to student achievement on standardized tests and district assessments, and the results of a parent satisfaction survey.

##### Menu

- Monies were used primarily to increase eligible employee compensation.
- The District also continued to use monies to reduce class sizes, and to employ teachers and instructional aides for AIMS intervention.
- Teachers participated in professional development activities to increase their knowledge of instructional strategies to help increase overall student achievement.
- Monies were also used for dropout prevention programs to address students' academic difficulties, attendance, and discipline.