

Lake Havasu Unified School District

Mohave County
Peer groups: Efficiency Group 4, Achievement Group 6
Legislative district(s): 3

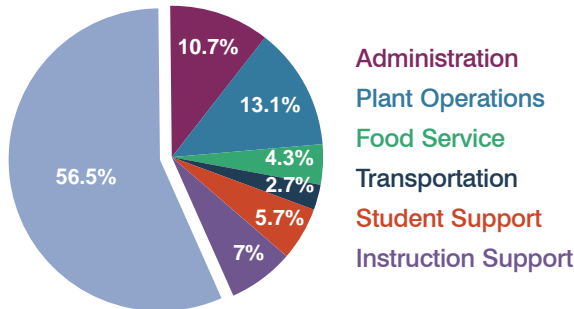
District size: Medium-Large
Students attending: 5,710
Number of schools: 8

OPERATIONAL EFFICIENCY

Spending by operational area

Classroom dollars

Nonclassroom dollars

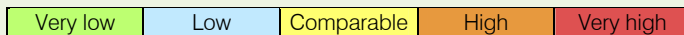


5-year trend

Total spending per pupil increased by 10 percent. Spending in the classroom decreased significantly from 61.8 to 56.5 percent. Spending on administration, plant operations, and instruction support increased significantly, and spending on food service decreased. Spending on other nonclassroom areas remained fairly stable.

District's cost measures relative to peer group

Operational Area	Measure	District	Peer Average	State Average
Administration	Cost per pupil	\$708	\$736	\$728
	Students per administrator	68	65	66
Plant Operations	Cost per square foot	\$5.84	\$5.52	\$6.10
	Square footage per student	148	169	152
Food Service	Cost per meal equivalent	\$2.20	\$2.60	\$2.45
Transportation	Cost per mile	\$3.52	\$2.93	\$3.39
	Miles per rider	552	324	283



Per-pupil spending by operational area

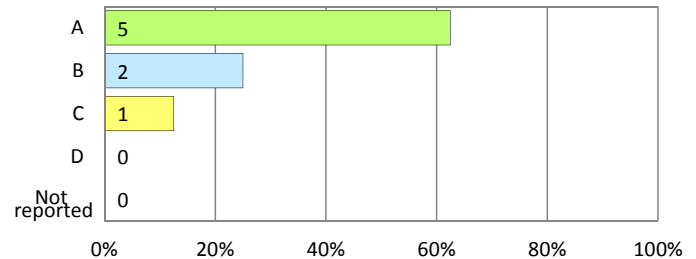
	District		Peer 2011	State 2011	National 2009
	2010	2011			
Total	\$6,557	\$6,633	\$7,026	\$7,485	\$10,591
Classroom dollars	\$3,876	\$3,746	\$3,783	\$4,098	\$6,456
Nonclassroom dollars:	\$2,681	\$2,887	\$3,243	\$3,387	\$4,135
Administration	632	708	736	728	1,147
Plant Operations	810	866	917	927	1,033
Food Service	290	284	351	375	404
Transportation	138	181	360	352	443
Student Support	390	381	528	571	573
Instruction Support	421	467	351	434	535

STUDENT ACHIEVEMENT AND TEACHER INFORMATION

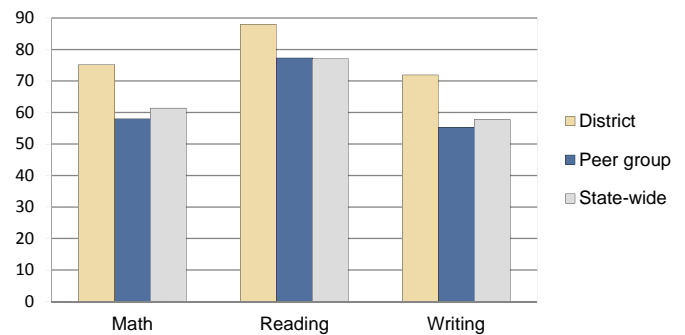
District and school letter grades

District grade: **B**

School grades (number and percentage):



Percentage of students meeting state standards (AIMS)



Student and teacher information

Measure	District	Peer Average	State Average
Attendance rate	95%	94%	95%
Graduation rate (2010)	66%	82%	78%
Poverty rate (2010)	23%	24%	22%
Students per teacher	17.8	17.3	18.1
Average teacher salary	\$39,002	\$41,429	\$45,637
Average years of experience	9.6	12.6	10.9
Percent of teachers in first 3 years	10%	12%	16%

Proposition 301 pay, goals, and results

Average additional salary earned by teachers: \$3,192

Type of goal	Goal met?
Student achievement	■
Dropout/graduation rates	-
Student attendance	-
Parent/student satisfaction	-
Teacher attendance	-
Teacher professional development	■
Teacher evaluations	-
Tutoring	-
Other	■

■ = yes, □ = no, ▴ = partially, and - = no goal set