

# Lake Havasu Unified School District

Mohave County  
Operational peer group: D  
Legislative districts: 3

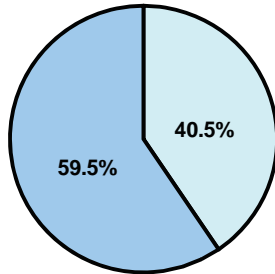
District size: Medium-Large  
Students attending: 6,128  
Number of schools: 9

## OPERATIONAL EFFICIENCY

### Average per-pupil spending

District  
State

Classroom  
**\$4,029**  
\$4,497



Nonclassroom  
**\$2,747**  
\$3,411

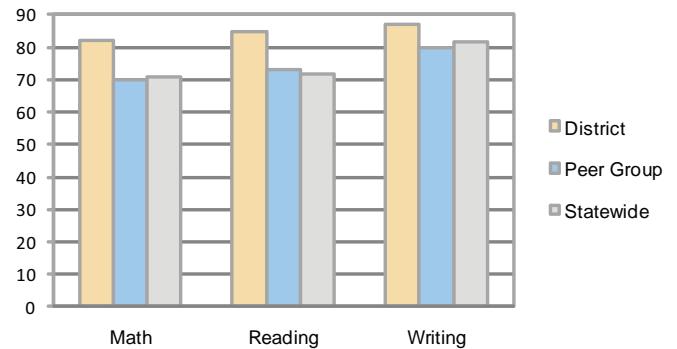
Total  
**\$6,776**  
\$7,908

### 5-year trend

Total spending per pupil increased by 38 percent. Spending in the classroom was fairly stable and decreased overall from 60.1 to 59.5 percent. Spending on instruction support increased significantly, while spending in other nonclassroom areas remained fairly stable.

## STUDENT ACHIEVEMENT AND TEACHER INFORMATION

### Percentage of students meeting state standards (AIMS)



### Adequate Yearly Progress (AYP) toward federal goals

7 schools met all applicable AYP objectives for NCLB. 2 did not because they failed to meet one or more of the following objectives: academic progress (2); graduation rate (1).

### Student and teacher information

Measure	District	Peer average	State average
Attendance rate	96%	94%	95%
Graduation rate (2008)	68%	73%	75%
Poverty rate	18%	15%	19%
Student/teacher ratio	17.4	17.2	17.1
Average teacher salary	\$43,847	\$42,175	\$45,209
Average years' experience	8.7	8.4	8.3
Percent of teachers in first 3 years	21%	34%	16%

### District's cost measures relative to peer group

Operational Area	Measure	District	Peer Average	State Average
Administration	Cost per pupil	\$650	\$775	\$729
	Students per administrator	64	61	66
Plant Operations	Cost per square foot	\$6.14	\$6.13	\$6.40
	Square footage per student	138	168	144
Food Service	Cost per meal equivalent	\$2.39	\$2.64	\$2.53
Transportation	Cost per mile	\$2.54	\$2.96	\$3.36
	Miles per rider	444	307	271

Very Low    Low    Comparable    High    Very High

### Proposition 301

#### Teacher pay

On average, each teacher, librarian, speech pathologist, and counselor earned between \$5,178 and \$6,221 in additional salary.

#### Performance pay plan goals and results

Type of goal	Goal met?
Student achievement	■
Dropout/ graduation rates	
Student attendance	
Parent/student satisfaction	
Teacher attendance	
Teacher professional development	■
Teacher evaluations	
Tutoring	
Other	■

■ = yes, □ = no, and ▮ = partially

### Per-pupil spending by function

	District		Peer	State	National
	2008	2009	2009	2009	2007
<b>Total</b>	<b>\$6,660</b>	<b>\$6,776</b>	<b>\$7,896</b>	<b>\$7,908</b>	<b>\$9,683</b>
<b>Classroom dollars</b>	<b>\$3,980</b>	<b>\$4,029</b>	<b>\$4,312</b>	<b>\$4,497</b>	<b>\$5,903</b>
<b>Nonclassroom dollars:</b>	<b>\$2,680</b>	<b>\$2,747</b>	<b>\$3,584</b>	<b>\$3,411</b>	<b>\$3,780</b>
Administration	649	650	775	729	1,050
Plant Operations	806	847	1,032	920	951
Food Service	406	359	365	382	369
Transportation	175	152	397	343	406
Student Support	383	390	629	594	512
Instruction Support	255	293	380	431	470
Other	6	56	6	12	22