

Classroom Dollars and Proposition 301 Results

Lake Havasu Unified School District

Mohave County

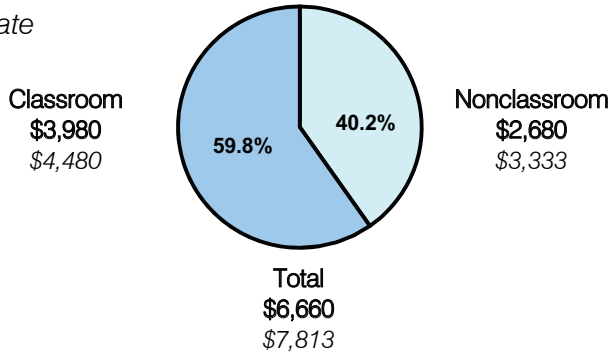
District size: Large
 Students attending: 6,150
 Number of schools: 9
 Number of certified teachers: 349

Classroom Dollars

Fiscal year 2008 averages per pupil

District

State

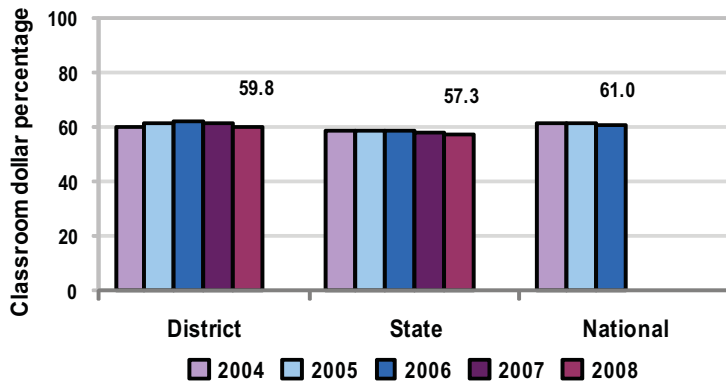


Comparative Information

	District			State
	2006	2007	2008	2008
Student/teacher ratio	19.8	18.3	17.6	17.3
Average teacher salary	\$43,597	\$43,090	\$42,388	\$44,967
Average years' experience	8.0	7.3	8.1	8.1

Classroom dollar ranking: 42 of 230 districts.

5-year comparison



Expenditures by function

	District					State	National
	2004	2005	2006	2007	2008	2008	2006
Classroom dollars	60.1	61.1	61.8	60.2	59.8	57.3	61.0
Nonclassroom dollars:							
Administration	10.8	9.7	8.6	10.2	9.7	9.2	10.8
Plant operations	12.8	12.3	11.9	11.7	12.1	11.3	9.9
Food service	6.4	6.7	6.1	6.5	6.1	4.8	3.8
Transportation	2.3	2.5	2.6	2.7	2.6	4.4	4.2
Student support	5.6	5.7	6.5	5.6	5.8	7.4	5.2
Instruction support	1.9	1.9	2.3	2.8	3.8	5.4	4.9
Other	0.1	0.1	0.2	0.3	0.1	0.2	0.2

Proposition 301

District-reported 2008 results

Teacher pay

- On average, each teacher, librarian, speech pathologist, and counselor earned between \$1,203 and \$2,738 in additional salary.

Performance

- The District accomplished its goals, which were based on school and individual performance.
- Each school met student achievement goals that were based on measures such as standardized tests or pre- and post-tests.
- Each school met goals requiring regular, documented communication with parents.
- Teachers participated in professional development activities in support of student achievement, including curriculum mapping projects to enhance classroom planning and developing teacher leadership through elementary academic coaches and secondary teacher leaders.

Menu

- Monies were used solely to increase eligible employee compensation.