

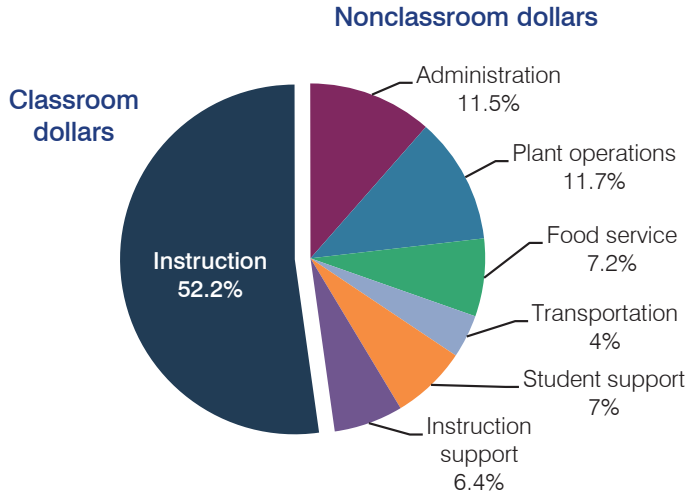
Laveen Elementary School District

Maricopa County
 Efficiency peer groups 8 and T-1, Achievement peer group 13
 Legislative district(s): 19 and 27

District size, location: Medium-Large, City
 Students attending: 5,554
 Number of schools: 7

OPERATIONAL EFFICIENCY

Spending by operational area



5-year spending trend

Total spending per pupil increased by 1 percent. Spending in the classroom varied year to year, decreasing overall from 57 to 52.2 percent. Overall, spending on plant operations and food service increased and spending on transportation and student support increased slightly. Spending on other nonclassroom areas varied year to year.

Cost measures relative to peer averages

Operational area	Measure	District	Peer average	State average
Administration	Cost per pupil	\$683	\$791	\$746
	Students per administrator	70	69	67
Plant operations	Cost per square foot	\$7.52	\$6.28	\$6.03
	Square footage per student	93	138	153
Food service	Cost per meal equivalent	\$2.35	\$2.54	\$2.58
Transportation	Cost per mile	\$5.96	\$6.28	\$3.55
	Cost per rider	\$500	\$582	\$1,015

Very low Low Comparable High Very high

Per pupil spending by operational area

	District		Peer average	State average	National average
	2012	2013	2013	2013	2011
Total	\$5,653	\$5,936	\$7,193	\$7,496	\$10,658
Classroom dollars	2,905	3,101	3,672	4,031	6,520
Nonclassroom dollars:	2,748	2,835	3,521	3,465	4,138
Administration	724	683	791	746	1,138
Plant operations	643	696	842	924	1,015
Food service	396	427	541	396	412
Transportation	234	235	273	369	452
Student support	375	413	541	582	593
Instruction support	376	381	533	448	528

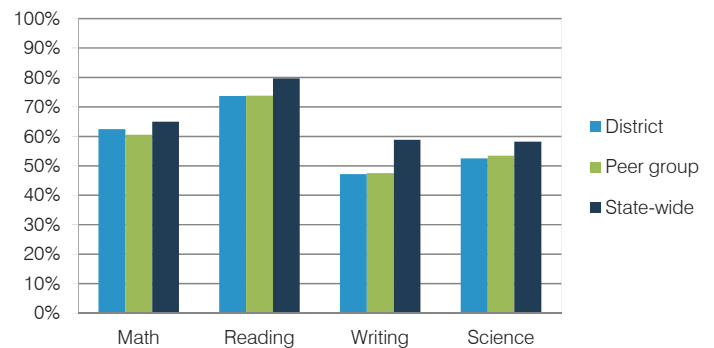
STUDENT ACHIEVEMENT, TEACHER MEASURES, AND FINANCIAL ASSESSMENT

ADE-reported district and school letter grades

District grade: **B**

Grade	Number of schools	Percentage of schools
A	1	14%
B	3	43%
C	2	29%
D	1	14%
F	0	0%
Not rated	0	0%

Students who met state standards (AIMS)



Student and teacher measures

Measure	District	Peer average	State average
Attendance rate	94%	95%	94%
Graduation rate (2012)	N/A	N/A	N/A
Poverty rate (2012)	23%	25%	25%
Students per teacher	20.9	19.1	18.3
Average teacher salary	\$39,341	\$40,312	\$45,264
Amount from Proposition 301	\$1,461	\$3,530	\$3,784
Average years of teacher experience	5.1	7.4	10.9
Percentage of teachers in first 3 years	53%	31%	19%

Financial stress assessment

Overall financial stress level: **Low**

Measure: 2011 through 2013

Measure	Assessment
Number of students attending district	Increase
Spending exceeded operating/capital budgets	No overspending
Spending increase election results	Voter-approved
Operating reserve percentage (max. 4%), trend	3.2%, Increasing
Years of capital reserve held	More than 3 years
Current financial and internal control status	Compliant

Stress level

