

# Laveen Elementary School District

Maricopa County

Efficiency peer groups 8 and T-1, Achievement peer group 13

Legislative district(s): 19 and 27

District size, location:

Medium-large, City

Students attending:

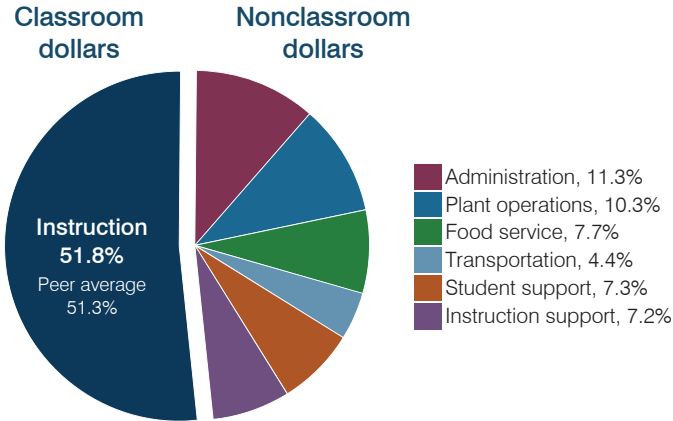
6,278

Number of schools:

7

## OPERATIONAL EFFICIENCY

### Spending by operational area



### Efficiency measures relative to peer averages

Operational area	Measure	District	Peer average	State average
Administration	Cost per pupil	\$741	\$943	\$806
	Students per administrative position	79	71	67
Plant operations	Cost per square foot	\$6.45	\$6.27	\$6.10
	Square footage per student	105	141	154
Food service	Cost per meal	\$2.55	\$2.60	\$2.81
Transportation	Cost per mile	\$6.18	\$6.21	\$3.72
	Cost per rider	\$550	\$783	\$1,092

### Per pupil spending

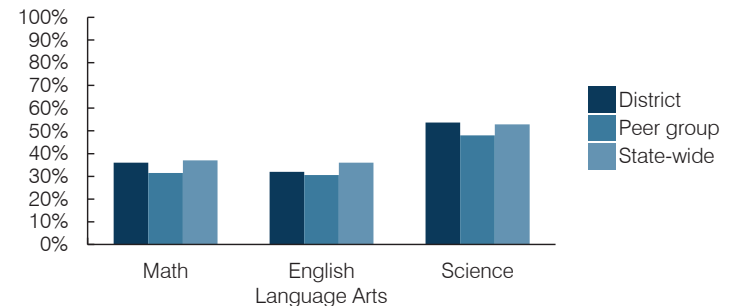
Spending by area	District		Peer average 2016	State average 2016
	2015	2016		
Instruction	\$ 3,277	\$ 3,401	\$ 3,896	\$ 4,145
Administration	731	741	943	806
Plant operations	655	679	866	939
Food service	483	503	598	415
Transportation	275	285	301	364
Student support	445	481	562	633
Instruction support	487	474	495	444
<b>Total operational</b>	<b>\$ 6,353</b>	<b>\$ 6,564</b>	<b>\$ 7,661</b>	<b>\$ 7,746</b>
Land and buildings	\$ 1,588	\$ 2,687	\$ 1,802	\$ 621
Equipment	353	761	577	400
Interest	96	107	250	216
Other	65	86	155	153
<b>Total nonoperational</b>	<b>\$ 2,102</b>	<b>\$ 3,641</b>	<b>\$ 2,784</b>	<b>\$ 1,390</b>
<b>Total per pupil spending</b>	<b>\$ 8,455</b>	<b>\$ 10,205</b>	<b>\$ 10,445</b>	<b>\$ 9,136</b>

## STUDENT AND TEACHER MEASURES, FINANCIAL ASSESSMENT, AND REVENUES

### Student and teacher measures

Measure	District	Peer average	State average
Attendance rate (2015)	94%	94%	94%
Graduation rate (2015)	N/A	N/A	N/A
Poverty rate (2015)	24%	26%	23%
Students per teacher	20.3	19.0	18.6
Average teacher salary	\$45,253	\$40,596	\$46,384
Amount from Proposition 301	\$3,916	\$4,805	\$5,315
Average years of teacher experience	6.0	7.6	11.0
Percentage of teachers in first 3 years	37%	39%	20%

### Students who passed state assessments



### Financial stress assessment

Overall financial stress level: **Low**

Measure: 2014 through 2016

Measure	Assessment
Change in number of district students	Increase
Spending exceeded operating/capital budgets	No overspending
Spending increase election results	Voter-approved
Operating reserve percentage, Trend	4.1%, Varying
Years of capital reserve held	More than 3 years
Current financial and internal control status	Compliant

Low Moderate High

### Per pupil revenues

Revenues by source	District		Peer average 2016	State average 2016
	2015	2016		
Federal	\$ 952	\$ 955	\$ 1,781	\$ 1,301
State	4,225	4,552	3,849	3,780
Local	2,699	2,785	4,470	4,268
<b>Total revenues per pupil</b>	<b>\$ 7,876</b>	<b>\$ 8,292</b>	<b>\$ 10,100</b>	<b>\$ 9,349</b>

### Select revenues from common sources

Source	District 2015	District 2016	Peer average 2016	State average 2016
Equalization formula funding	\$ 4,701	\$ 4,971	\$ 5,085	\$ 5,471
Grants	972	975	1,865	1,182
Donations and tax credits	25	31	46	86

### Select revenues from less common sources

Source	District 2015	District 2016	Number of peers receiving
Desegregation	\$ 0	\$ 0	4 of 19
Small school adjustment	0	0	0 of 19
Federal impact aid	0	0	0 of 19
Voter-approved levy increases	1,369	1,457	19 of 19

**Classroom dollar percentage**

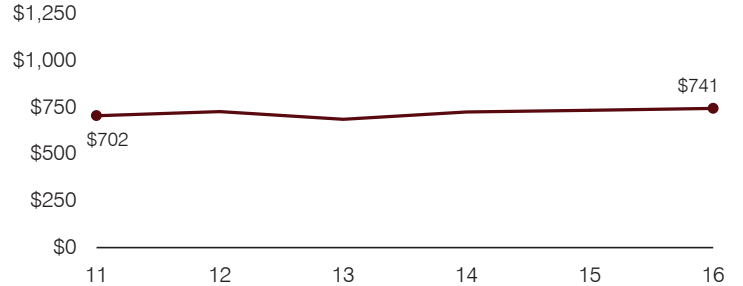
Year:	2001	2002	2003	2004	2005	2006	2007	2008	2009	2010	2011	2012	2013	2014	2015	2016
Percentage:	53.8	52.1	52.9	52.3	50.7	51.0	53.6	57.0	55.2	53.3	51.7	51.4	52.2	52.7	51.6	51.8

**OPERATIONAL TRENDS**  
Fiscal years as indicated

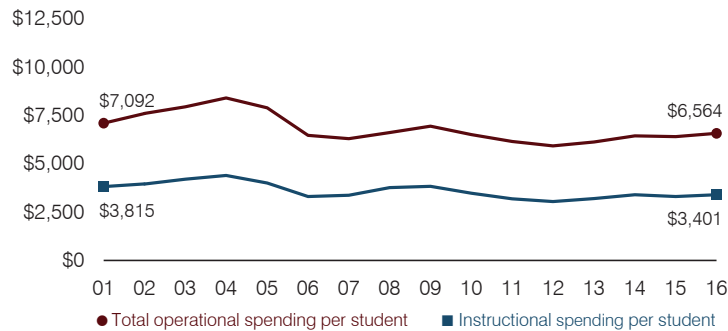
**5-year spending trend (2011 through 2016)**

Total operational spending per pupil, adjusted for inflation, increased by 7 percent. The percentage of dollars spent in the classroom varied year to year, ranging overall from a high of 52.7 to a low of 51.4 percent. Overall, as a percentage of total operational spending, plant operations decreased substantially and administration decreased, while food service and instruction support increased.

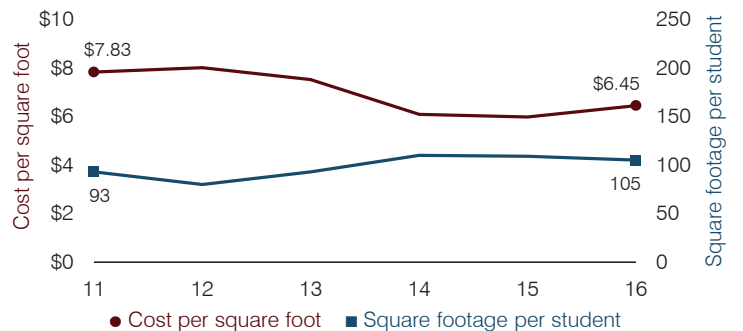
**Administrative cost per pupil**



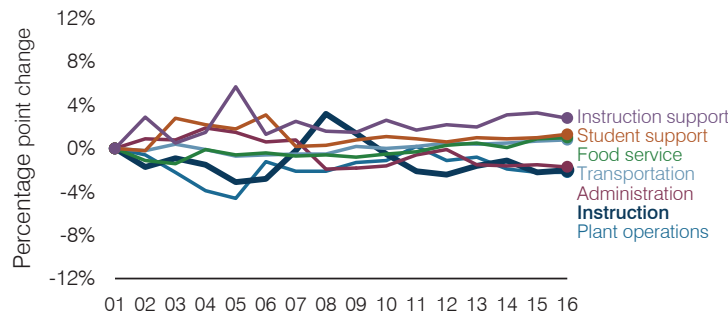
**Total operational and instructional spending per pupil (inflation adjusted to 2016 dollars)**



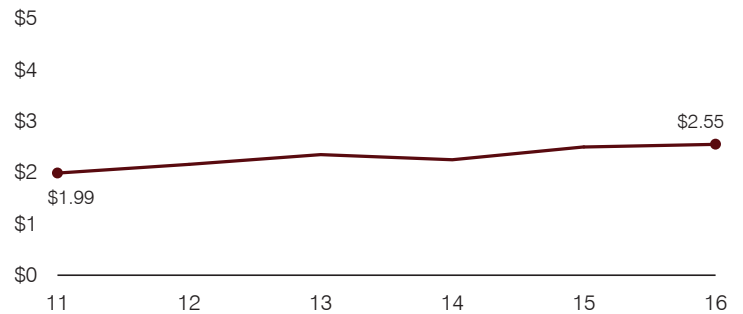
**Plant cost per square foot and square footage per student**



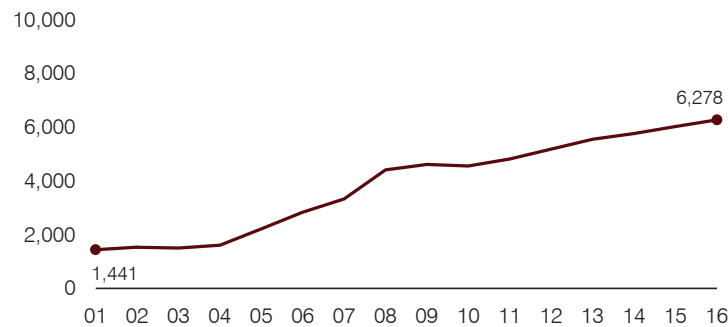
**Changes in operational spending percentages**



**Food service cost per meal**



**Students attending**



**Transportation costs per mile and per rider**

