

Laveen Elementary School District

Maricopa County
Operational peer group: I
Legislative districts: 16

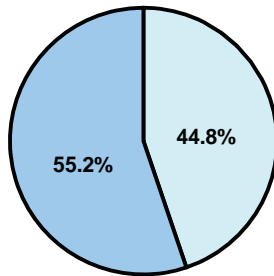
District size: Medium-Large
Students attending: 4,615
Number of schools: 6

OPERATIONAL EFFICIENCY

Average per-pupil spending

District
State

Classroom
\$3,453
\$4,497



Nonclassroom
\$2,798
\$3,411

Total
\$6,251
\$7,908

5-year trend

Student enrollment almost tripled, which contributed to the 5 percent decrease in total spending per pupil. Spending in the classroom varied year to year and increased significantly overall from 52.3 to 55.2 percent. Spending on administration and student support decreased, spending on plant operations increased, and spending in other nonclassroom areas varied year to year.

District's cost measures relative to peer group

Operational Area	Measure	District	Peer Average	State Average
Administration	Cost per pupil	\$701	\$840	\$729
	Students per administrator	87	69	66
Plant Operations	Cost per square foot	\$7.22	\$7.16	\$6.40
	Square footage per student	97	123	144
Food Service	Cost per meal equivalent	\$2.10	\$2.38	\$2.53
Transportation	Cost per mile	\$5.61	\$5.18	\$3.36
	Miles per rider	116	132	271

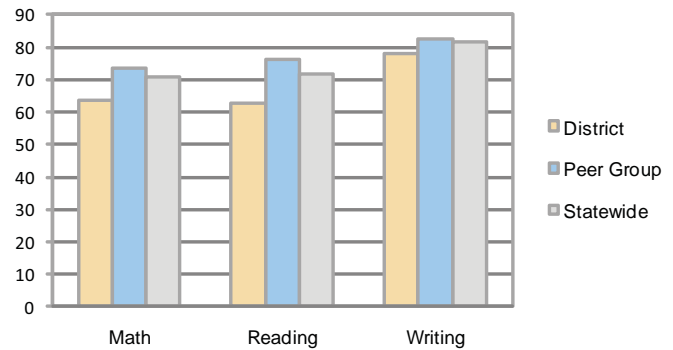
Very Low Low Comparable High Very High

Per-pupil spending by function

	District		Peer	State	National
	2008	2009	2009	2009	2007
Total	\$5,866	\$6,251	\$8,194	\$7,908	\$9,683
Classroom dollars	\$3,345	\$3,453	\$4,515	\$4,497	\$5,903
Nonclassroom dollars:	\$2,521	\$2,798	\$3,679	\$3,411	\$3,780
Administration	644	701	840	729	1,050
Plant Operations	613	699	890	920	951
Food Service	359	369	525	382	369
Transportation	187	235	253	343	406
Student Support	372	427	626	594	512
Instruction Support	346	367	545	431	470
Other	0	0	0	12	22

STUDENT ACHIEVEMENT AND TEACHER INFORMATION

Percentage of students meeting state standards (AIMS)



Adequate Yearly Progress (AYP) toward federal goals

5 schools met all applicable AYP objectives. 1 did not because some students did not demonstrate sufficient academic progress.

Student and teacher information

Measure	District	Peer average	State average
Attendance rate	95%	95%	95%
Graduation rate (2008)	N/A	84%	75%
Poverty rate	16%	13%	19%
Student/teacher ratio	19.6	17.5	17.1
Average teacher salary	\$41,363	\$44,052	\$45,209
Average years' experience	4.2	8.4	8.3
Percent of teachers in first 3 years	76%	30%	16%

Proposition 301

Teacher pay

On average, each teacher earned \$3,866 in additional salary, and each speech pathologist, counselor, psychologist, social worker, and occupational therapist earned between \$1,072 and \$4,050.

Performance pay plan goals and results

Type of goal	Goal met?
Student achievement	▴
Dropout/ graduation rates	■
Student attendance	■
Parent/student satisfaction	■
Teacher attendance	■
Teacher professional development	■
Teacher evaluations	■
Tutoring	■
Other	■

■ = yes, □ = no, and ▴ = partially