

Liberty Elementary School District

Maricopa County
Operational peer group: I
Legislative districts: 12

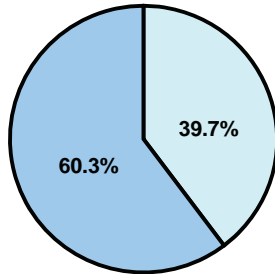
District size: Medium-Large
Students attending: 3,638
Number of schools: 5

OPERATIONAL EFFICIENCY

Average per-pupil spending

District
State

Classroom
\$4,253
\$4,497



Nonclassroom
\$2,805
\$3,411

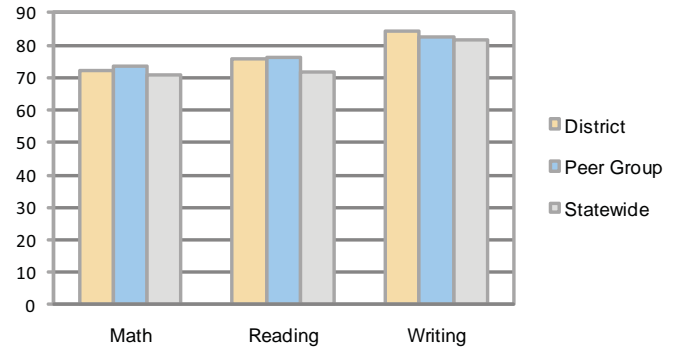
Total
\$7,058
\$7,908

5-year trend

Total spending per pupil increased by 27 percent. Spending in the classroom varied year to year and decreased significantly overall from 64.3 to 60.3 percent. Spending on instruction support increased significantly, while spending in other nonclassroom areas remained fairly stable.

STUDENT ACHIEVEMENT AND TEACHER INFORMATION

Percentage of students meeting state standards (AIMS)



Adequate Yearly Progress (AYP) toward federal goals

5 schools met all applicable AYP objectives for NCLB.

Student and teacher information

| Measure | District | Peer average | State average |
|--------------------------------------|----------|--------------|---------------|
| Attendance rate | 95% | 95% | 95% |
| Graduation rate (2008) | N/A | 84% | 75% |
| Poverty rate | 12% | 13% | 19% |
| Student/teacher ratio | 16.2 | 17.5 | 17.1 |
| Average teacher salary | \$42,235 | \$44,052 | \$45,209 |
| Average years' experience | 5.9 | 8.4 | 8.3 |
| Percent of teachers in first 3 years | 51% | 30% | 16% |

District's cost measures relative to peer group

| Operational Area | Measure | District | Peer Average | State Average |
|------------------|----------------------------|----------|--------------|---------------|
| Administration | Cost per pupil | \$624 | \$840 | \$729 |
| | Students per administrator | 68 | 69 | 66 |
| Plant Operations | Cost per square foot | \$5.62 | \$7.16 | \$6.40 |
| | Square footage per student | 96 | 123 | 144 |
| Food Service | Cost per meal equivalent | \$2.47 | \$2.38 | \$2.53 |
| Transportation | Cost per mile | \$2.81 | \$5.18 | \$3.36 |
| | Miles per rider | NR | 132 | 271 |

Very Low Low Comparable High Very High

Proposition 301

Teacher pay

On average, each teacher, librarian, speech pathologist, and counselor earned between \$3,677 and \$4,890 in additional salary.

Performance pay plan goals and results

| Type of goal | Goal met? |
|----------------------------------|-----------|
| Student achievement | ■ |
| Dropout/ graduation rates | ■ |
| Student attendance | ■ |
| Parent/student satisfaction | ■ |
| Teacher attendance | ■ |
| Teacher professional development | ■ |
| Teacher evaluations | ▴ |
| Tutoring | ■ |
| Other | ▴ |

■ = yes, □ = no, and ▴ = partially

Per-pupil spending by function

| | District 2008 | District 2009 | Peer 2009 | State 2009 | National 2007 |
|------------------------------|----------------|----------------|----------------|----------------|----------------|
| Total | \$6,490 | \$7,058 | \$8,194 | \$7,908 | \$9,683 |
| Classroom dollars | \$3,956 | \$4,253 | \$4,515 | \$4,497 | \$5,903 |
| Nonclassroom dollars: | \$2,534 | \$2,805 | \$3,679 | \$3,411 | \$3,780 |
| Administration | 684 | 624 | 840 | 729 | 1,050 |
| Plant Operations | 499 | 537 | 890 | 920 | 951 |
| Food Service | 280 | 291 | 525 | 382 | 369 |
| Transportation | 280 | 325 | 253 | 343 | 406 |
| Student Support | 344 | 400 | 626 | 594 | 512 |
| Instruction Support | 447 | 628 | 545 | 431 | 470 |
| Other | 0 | 0 | 0 | 12 | 22 |