

Classroom Dollars and Proposition 301 Results

Litchfield Elementary School District

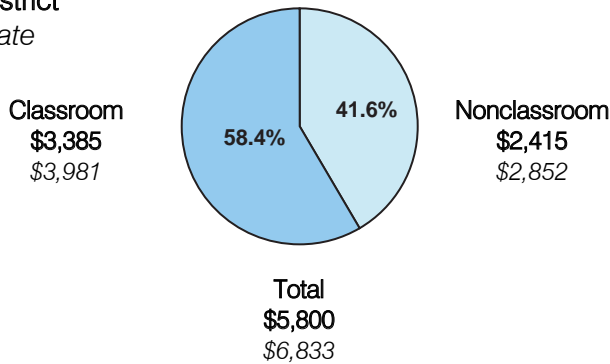
Maricopa County

District size: Large
 Students attending: 7,381
 Number of schools: 11
 Number of certified teachers: 388

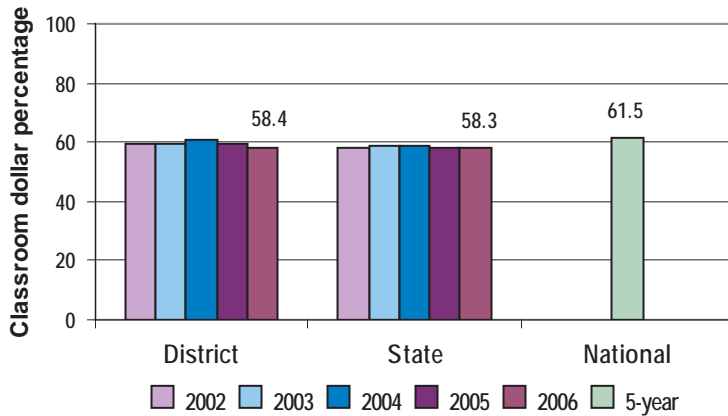
Classroom Dollars

Fiscal year 2006 averages per pupil

District
 State



5-year comparison



Expenditures by function

	Percentage					State 2006	National 5-year
	2002	2003	2004	2005	2006		
Classroom dollars	59.7	59.3	60.7	59.6	58.4	58.3	61.5
Nonclassroom dollars:							
Administration	10.9	10.9	10.1	9.9	9.8	9.4	11.0
Plant operations	13.4	13.3	12.8	12.5	12.1	11.2	9.6
Food service	5.3	5.1	4.7	5.5	5.7	4.7	3.9
Transportation	4.9	5.4	5.2	4.4	4.7	4.2	4.0
Student support	4.1	4.4	4.3	4.2	6.1	7.2	5.1
Instruction support	1.7	1.6	2.2	3.9	3.2	4.8	4.7
Other						0.2	0.2

Comparative Information

	District			State 2006
	2004	2005	2006	
Student/teacher ratio	20.6	18.6	19.0	17.7
Average teacher salary	\$35,198	\$35,442	\$37,933	\$42,967
Average years' experience	6.0	5.7	6.1	8.3

Classroom dollar ranking: 67 of 229 districts.

Proposition 301

District-reported 2006 results

Teacher pay

- On average, each teacher earned an additional \$3,335 in salary; each librarian and counselor earned an additional \$3,450; and each speech pathologist and audiologist earned an additional \$1,050.

Performance

- The District accomplished its goals, which were similar to the prior fiscal year's goals and were based on individual performance.
- At least 80 percent of students attained or exceeded targeted growth indicators in language arts and math.
- The teacher attendance rate was at least 95 percent.
- Teachers were evaluated based on the desired instructional skills in state teaching standards, including instructional planning, classroom environment, teaching, assessing student learning, and professional responsibilities.

Menu

- Teachers and instructional aides were compensated for AIMS intervention and teacher development activities, including assisting at-risk students in reading and math, serving as instructional coaches, and providing staff training.