

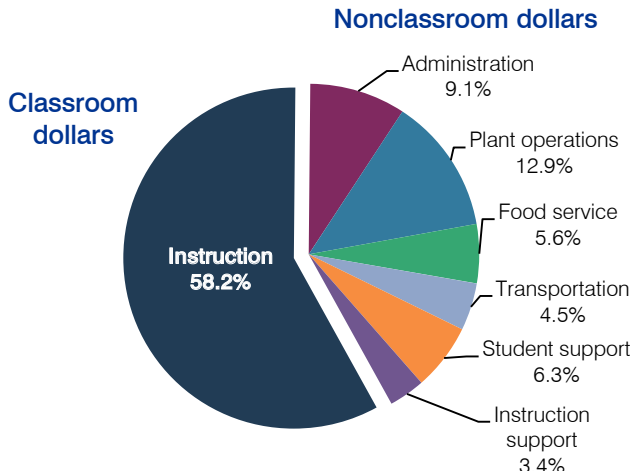
# Litchfield Elementary School District

Maricopa County  
 Efficiency peer groups 7 and T-3, Achievement peer group 13  
 Legislative district(s): 13, 19 and 29

District size / location: Large, Suburb  
 Students attending: 9,774  
 Number of schools: 13

## OPERATIONAL EFFICIENCY

### Spending by operational area



### 5-year spending trend

Total spending per pupil increased by 8 percent. Spending in the classroom was stable, increasing slightly from 58 to 58.2 percent. Overall, spending on administration decreased, while spending on other nonclassroom areas remained stable.

### Cost measures relative to peer averages

Operational area	Measure	District	Peer average	State average
Administration	Cost per pupil	\$555	\$695	\$736
	Students per administrator	97	67	66
Plant operations	Cost per square foot	\$6.68	\$6.05	\$6.09
	Square footage per student	118	131	152
Food service	Cost per meal equivalent	\$2.04	\$2.41	\$2.47
Transportation	Cost per mile	\$3.41	\$3.80	\$3.50
	Cost per rider	\$795	\$940	\$982

Very low   Low   Comparable   High   Very high

### Per-pupil spending by operational area

	District		Peer average	State average	National average
	2011	2012	2012	2012	2010
<b>Total</b>	<b>\$5,941</b>	<b>\$6,111</b>	<b>\$7,254</b>	<b>\$7,475</b>	<b>\$10,652</b>
<b>Classroom dollars</b>	<b>3,472</b>	<b>3,555</b>	<b>3,944</b>	<b>4,053</b>	<b>6,526</b>
<b>Nonclassroom dollars:</b>	<b>2,469</b>	<b>2,556</b>	<b>3,310</b>	<b>3,422</b>	<b>4,126</b>
Administration	520	555	695	736	1,139
Plant operations	756	787	794	928	1,012
Food service	320	346	489	382	405
Transportation	254	274	299	362	443
Student support	400	385	526	578	592
Instruction support	219	209	507	436	535

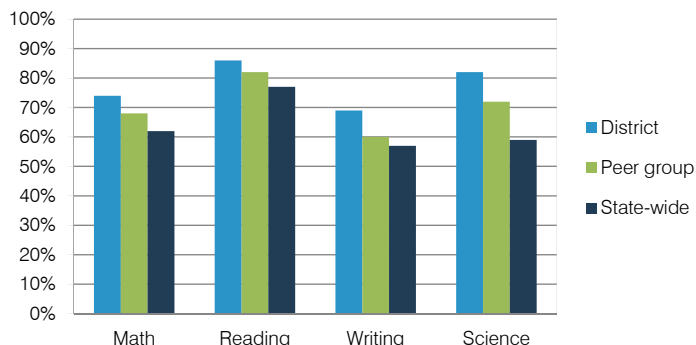
## STUDENT ACHIEVEMENT, TEACHER MEASURES, AND FINANCIAL ASSESSMENT

### ADE-reported district and school letter grades

District grade: **A**

Grade	Number of schools	Percentage of schools
A	9	69%
B	4	31%
C	0	0%
D	0	0%
F	0	0%
Not rated	0	0%

### Percentage of students who met state standards (AIMS)



### Student and teacher measures

Measure	District	Peer average	State average
Attendance rate	95%	96%	94%
Graduation rate (2011)	N/A	N/A	N/A
Poverty rate (2011)	13%	16%	25%
Students per teacher	20.1	18.2	18.1
Average teacher salary	\$45,845	\$43,760	\$45,193
Amount from Proposition 301	\$3,678	\$3,355	\$3,195
Average years of teacher experience	8.4	8.6	11.0
Percentage of teachers in first 3 years	18%	19%	16%

### Financial stress assessment

Overall financial stress level: **Low**

Measure: 2010 through 2012	Assessment
Number of students attending	Increase
Spending exceeded operating/capital budgets	No overspending
Spending increase election results	Voter-rejected
Operating reserve percentage (max. 4%), trend	3.9%, Steady
Years of capital reserve held	More than 3 years
Current financial and internal control status	Compliant

Stress level: **Low**   Moderate   High