

Litchfield Elementary School District

Maricopa County
Operational peer group: H
Legislative districts: 4, 12

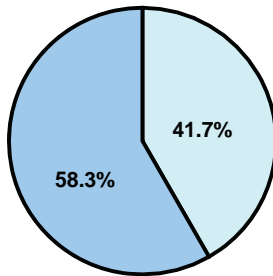
District size: Large
Students attending: 9,427
Number of schools: 11

OPERATIONAL EFFICIENCY

Average per-pupil spending

District
State

Classroom
\$3,629
\$4,497



Nonclassroom
\$2,600
\$3,411

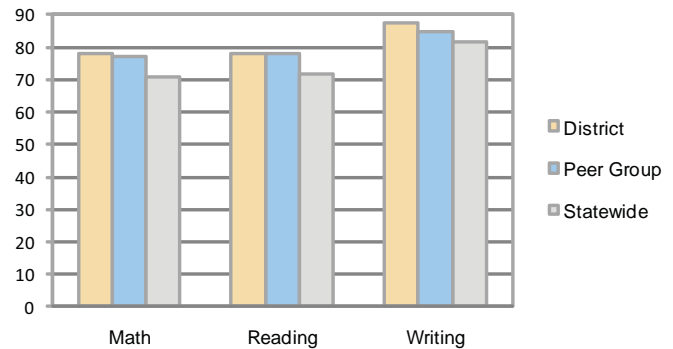
Total
\$6,229
\$7,908

5-year trend

Total spending per pupil increased by 20 percent. Spending in the classroom was fairly stable and decreased significantly overall from 60.7 to 58.3 percent. Spending on food service, student support, and instruction support increased, while spending on administration decreased.

STUDENT ACHIEVEMENT AND TEACHER INFORMATION

Percentage of students meeting state standards (AIMS)



Adequate Yearly Progress (AYP) toward federal goals

11 schools met all applicable AYP objectives for NCLB.

District's cost measures relative to peer group

Operational Area	Measure	District	Peer Average	State Average
Administration	Cost per pupil	\$541	\$705	\$729
	Students per administrator	92	67	66
Plant Operations	Cost per square foot	\$7.58	\$6.62	\$6.40
	Square footage per student	103	120	144
Food Service	Cost per meal equivalent	\$1.73	\$2.44	\$2.53
Transportation	Cost per mile	\$3.16	\$4.77	\$3.36
	Miles per rider	254	197	271

Very Low Low Comparable High Very High

Student and teacher information

Measure	District	Peer average	State average
Attendance rate	95%	96%	95%
Graduation rate (2008)	N/A	85%	75%
Poverty rate	11%	13%	19%
Student/teacher ratio	19.8	17.3	17.1
Average teacher salary	\$48,109	\$45,833	\$45,209
Average years' experience	6.6	9.1	8.3
Percent of teachers in first 3 years	43%	27%	16%

Proposition 301

Teacher pay

On average, each teacher, librarian, counselor, and instructional coach earned between \$4,379 and \$4,400 in additional salary.

Performance pay plan goals and results

Type of goal	Goal met?
Student achievement	■
Dropout/ graduation rates	
Student attendance	
Parent/student satisfaction	
Teacher attendance	▲
Teacher professional development	
Teacher evaluations	■
Tutoring	
Other	

■ = yes, □ = no, and ▲ = partially

Per-pupil spending by function

	District		Peer	State	National
	2008	2009	2009	2009	2007
Total	\$6,269	\$6,229	\$7,808	\$7,908	\$9,683
Classroom dollars	\$3,627	\$3,629	\$4,486	\$4,497	\$5,903
Nonclassroom dollars:	\$2,642	\$2,600	\$3,322	\$3,411	\$3,780
Administration	503	541	705	729	1,050
Plant Operations	861	781	786	920	951
Food Service	370	388	494	382	369
Transportation	310	294	272	343	406
Student Support	362	375	536	594	512
Instruction Support	235	221	529	431	470
Other	1	0	0	12	22