

Classroom Dollars and Proposition 301 Results

Litchfield Elementary School District

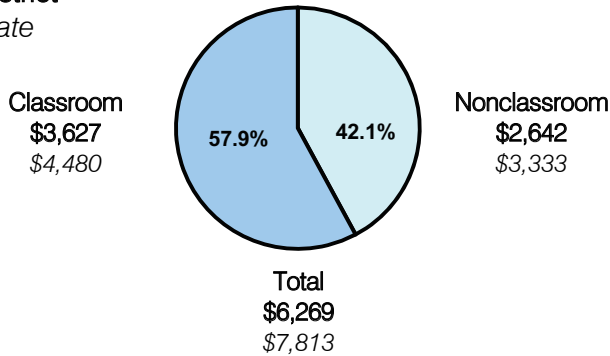
Maricopa County

District size: Large
 Students attending: 8,946
 Number of schools: 11
 Number of certified teachers: 450

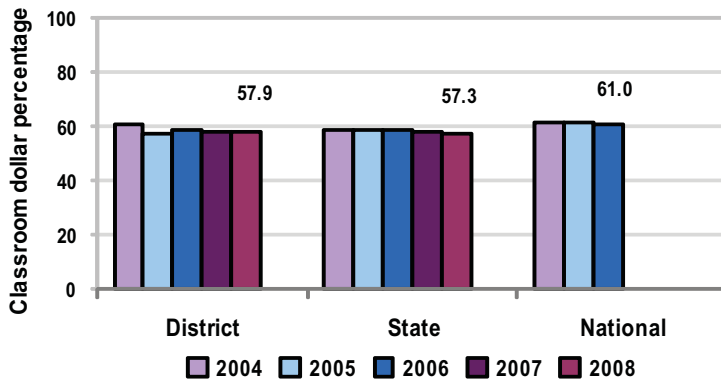
Classroom Dollars

Fiscal year 2008 averages per pupil

District
 State



5-year comparison



Expenditures by function

	Percentage					State 2008	National 2006
	District						
	2004	2005	2006	2007	2008		
Classroom dollars	60.7	57.2	58.4	58.0	57.9	57.3	61.0
Nonclassroom dollars:							
Administration	10.1	10.0	9.8	10.2	8.3	9.2	10.8
Plant operations	12.8	12.5	12.1	12.6	13.5	11.3	9.9
Food service	4.7	5.0	5.7	5.2	5.9	4.8	3.8
Transportation	5.2	4.3	4.7	5.0	4.9	4.4	4.2
Student support	4.3	5.7	6.1	6.2	5.8	7.4	5.2
Instruction support	2.2	5.3	3.2	2.8	3.7	5.4	4.9
Other						0.2	0.2

Comparative Information

	District			State 2008
	2006	2007	2008	
Student/teacher ratio	19.0	19.3	19.9	17.3
Average teacher salary	\$37,933	\$41,014	\$45,891	\$44,967
Average years' experience	6.1	6.6	6.0	8.1

Classroom dollar ranking: 64 of 230 districts.

Proposition 301

District-reported 2008 results

Teacher pay

- On average, each teacher, librarian, counselor, speech pathologist, and instructional coach earned between \$5,136 and \$5,200 in additional salary.

Performance

- The District accomplished its goals, which were similar to the prior fiscal year's goals and were based on individual performance.
- At least 80 percent of students attained or exceeded targeted growth indicators in language arts and math.
- The teacher attendance rate was at least 95 percent.
- Teachers were evaluated based on the desired instructional skills from state teaching standards, including instructional planning, classroom environment, and teaching.

Menu

- Teachers and instructional aides were compensated for AIMS intervention activities. The District reports that AIMS test scores for 71 percent of students indicated at least 1 year's growth.
- Teachers received stipends for providing staff training and attending trainings and conferences.
- Monies were also used to increase eligible employee compensation.