

Classroom Dollars and Proposition 301 Results

Litchfield Elementary School District

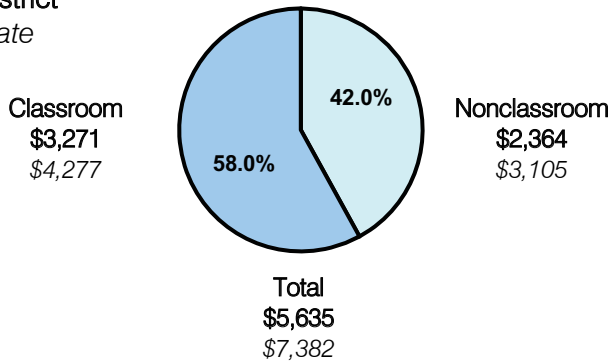
Maricopa County

District size: Large
 Students attending: 8,283
 Number of schools: 11
 Number of certified teachers: 430

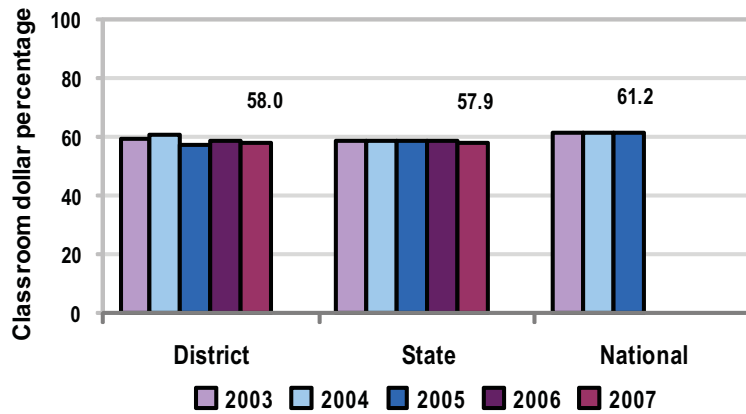
Classroom Dollars

Fiscal year 2007 averages per pupil

District
 State



5-year comparison



Expenditures by function

	Percentage					State 2007	National 2005
	2003	2004	2005	2006	2007		
Classroom dollars	59.3	60.7	57.2	58.4	58.0	57.9	61.2
Nonclassroom dollars:							
Administration	10.9	10.1	10.0	9.8	10.2	9.5	11.0
Plant operations	13.3	12.8	12.5	12.1	12.6	11.3	9.6
Food service	5.1	4.7	5.0	5.7	5.2	4.7	3.9
Transportation	5.4	5.2	4.3	4.7	5.0	4.3	4.1
Student support	4.4	4.3	5.7	6.1	6.2	7.3	5.2
Instruction support	1.6	2.2	5.3	3.2	2.8	4.8	4.8
Other						0.2	0.2

Comparative Information

	District			State
	2005	2006	2007	2007
Student/teacher ratio	18.6	19.0	19.3	17.4
Average teacher salary	\$35,442	\$37,933	\$41,014	\$43,833
Average years' experience	5.7	6.1	6.6	8.1

Classroom dollar ranking: 63 of 229 districts.

Proposition 301

District-reported 2007 results

Teacher pay

- On average, each teacher, librarian, counselor, speech pathologist, and instructional coach earned between \$3,177 and \$3,250 in additional salary.

Performance

- The District accomplished its goals, which were similar to the prior fiscal year's goals and were based on individual performance.
- At least 80 percent of students attained or exceeded targeted growth indicators in language arts and math.
- The teacher attendance rate was at least 95 percent.
- Teachers were evaluated based on the desired instructional skills in state teaching standards, including instructional planning, classroom environment, and teaching.

Menu

- Teachers and instructional aides were compensated for AIMS intervention activities. The District reports that the test scores for 71 percent of the students served demonstrate at least 1 year's growth.
- Teachers received stipends for providing staff training and attending trainings and conferences.
- Monies were also used to increase eligible employee compensation.