

Classroom Dollars and Proposition 301 Results

Littlefield Unified School District

Mohave County

District size: Small
 Students attending: 510
 Number of schools: 2
 Number of certified teachers: 32

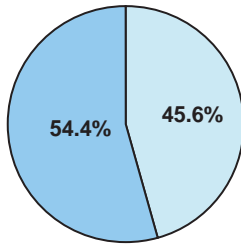
Classroom Dollars

Fiscal year 2006 averages per pupil

District

State

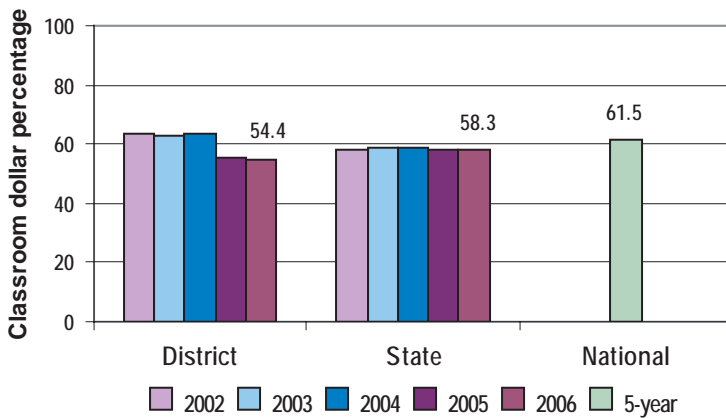
Classroom
\$3,969
\$3,981



Nonclassroom
\$3,328
\$2,852

Total
\$7,297
\$6,833

5-year comparison



Expenditures by function

	District					State 2006	National 5-year
	2002	2003	2004	2005	2006		
Classroom dollars	63.4	62.9	63.7	55.6	54.4	58.3	61.5
Nonclassroom dollars:							
Administration	12.5	11.5	10.5	15.6	15.3	9.4	11.0
Plant operations	9.3	9.3	9.0	10.8	10.6	11.2	9.6
Food service	7.1	6.7	6.7	6.6	7.7	4.7	3.9
Transportation	5.4	5.6	5.6	6.6	6.1	4.2	4.0
Student support	0.6	1.3	1.1	1.6	2.3	7.2	5.1
Instruction support	1.7	2.7	3.4	3.2	3.6	4.8	4.7
Other						0.2	0.2

Comparative Information

	District			State
	2004	2005	2006	2006
Student/teacher ratio	15.8	15.8	15.9	17.7
Average teacher salary	\$34,028	\$33,412	\$34,348	\$42,967
Average years' experience	7.0	6.5	6.4	8.3

Classroom dollar ranking: 132 of 229 districts.

Proposition 301

District-reported 2006 results

Teacher pay

- On average, each teacher earned an additional \$3,072 in salary and each librarian earned an additional \$2,321.

Performance

- The District accomplished its goals, which were based on school and individual performance.
- The District used end-of-the-semester and end-of-the-year tests to measure student achievement.
- Teachers actively participated in professional development activities, faculty meetings, grade level/department meetings, and at least one committee, and received satisfactory performance evaluations.
- Teachers made efforts to increase contact with parents, including sending letters and holding formal meetings with parents at least twice a year.

Menu

- Monies were used to pay for eligible employees' health insurance premiums.