

Littlefield Unified School District

Mohave County

Efficiency peer groups 6 and T-7, Achievement peer group 4¹

Legislative district(s): 5

District size, location:

Small, Rural

Students attending:

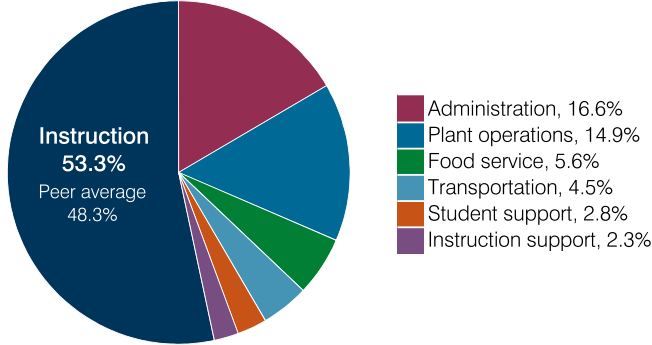
354

Number of schools:

2

OPERATIONAL EFFICIENCY

Spending by operational area



Efficiency measures relative to peer averages

Operational area	Measure	District	Peer average	State average
Administration	Cost per pupil	\$1,573	\$1,744	\$860
	Students per administrative position	52	43	66
Plant operations	Cost per square foot	\$6.19	\$5.27	\$6.34
	Square footage per student	228	321	156
Food service	Cost per meal	\$3.21	\$3.96	\$3.02
Transportation	Cost per mile	\$2.32	\$3.35	\$4.05
	Cost per rider	\$582	\$1,057	\$1,301

Very low Low Comparable High Very high

Per pupil spending

Spending by area	District		Peer average 2018	State average 2018
	2017	2018		
Instruction	\$ 4,602	\$ 5,053	\$ 5,556	\$ 4,480
Administration	1,637	1,573	1,744	860
Plant operations	1,296	1,412	1,706	988
Food service	574	535	546	425
Transportation	565	429	592	388
Student support	413	265	672	693
Instruction support	198	212	393	462
Total operational	9,285	9,479	11,209	8,296
Land and buildings	43	108	1,077	827
Equipment	217	590	601	409
Interest	168	151	162	228
Other	323	336	60	169
Total nonoperational	751	1,185	1,900	1,633
Total per pupil spending	\$ 10,036	\$ 10,664	\$ 13,109	\$ 9,929

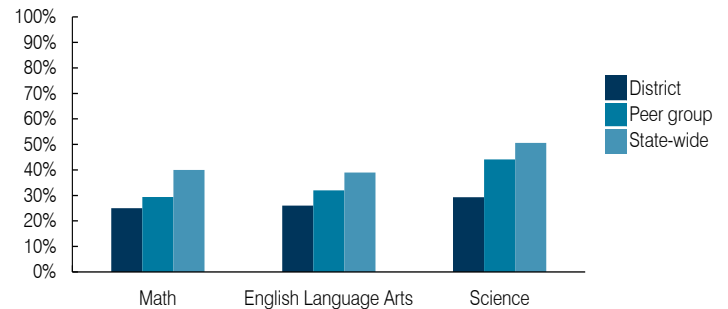
¹ See Appendix A for information such as districts included in each peer group and Appendix B for sources and methodology.

STUDENT ACHIEVEMENT, STUDENT AND TEACHER MEASURES, AND REVENUES

ADE-assigned school letter grades

Grade	Number of schools	Percentage of schools
A	0	0%
B	0	0%
C	1	50%
D	1	50%
F	0	0%

Students who passed State assessments



Student and teacher measures

Measure	District	Peer average	State average
Attendance rate	94%	94%	94%
Graduation rate (2017)	79%	85%	78%
Poverty rate (2017)	16%	13%	19%
Special education population	11%	13%	12%
Students per teacher	14.8	16.6	18.4
Average teacher salary	\$44,628	\$47,740	\$48,951
Amount from Prop 301	\$6,782	\$6,338	\$6,411
Average years of teacher experience	18.6	11.9	11.4
Percentage of teachers in first 3 years	14%	17%	19%

Per pupil revenues

Revenues by source	District		Peer average 2018	State average 2018
	2017	2018		
Federal	\$ 1,558	\$ 1,458	\$ 2,405	\$ 1,317
State	5,457	5,831	4,080	4,011
Local	3,793	4,763	8,027	4,592
Total per pupil revenues	\$ 10,808	\$ 12,052	\$ 14,512	\$ 9,920

Select revenues from common sources

Source	District	Peer average	State average
Equalization formula funding	\$ 7,385	\$ 7,565	\$ 7,175
Grants	1,905	2,021	2,252
Donations and tax credits	69	56	337

Select revenues from less common sources

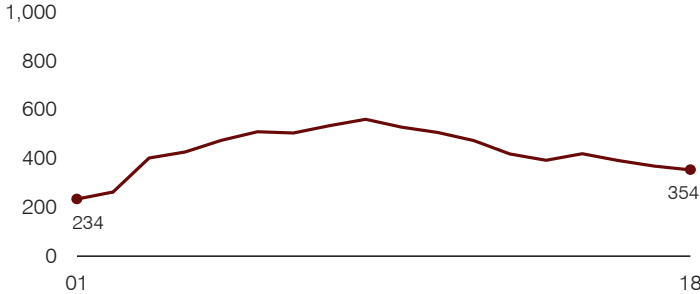
Source	District	Peer average	State average
Desegregation	\$ 0	\$ 0	0 of 18
Small school adjustment	0	0	5 of 18
Federal impact aid	0	0	3 of 18
Voter-approved levy increases	622	650	14 of 18

Instructional spending percentage

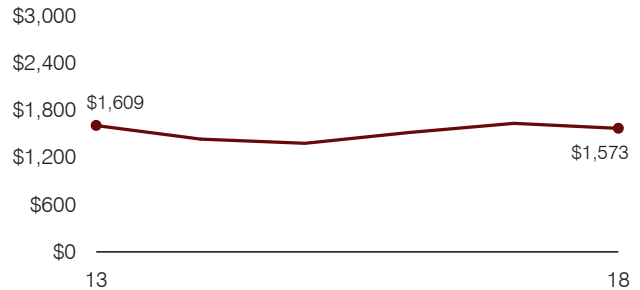
Year: 2001 2002 2003 2004 2005 2006 2007 2008 2009 2010 2011 2012 2013 2014 2015 2016 2017 2018
 Percentage: 52.5 63.4 62.9 63.7 55.6 54.4 55.4 54.6 50.6 52.6 53.8 54.3 50.2 51.9 51.3 52.8 49.6 53.3

TRENDS AND FINANCIAL STRESS ASSESSMENT
 Fiscal years as indicated

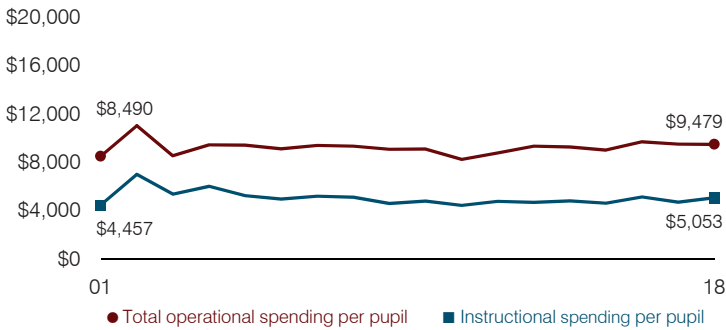
Students attending



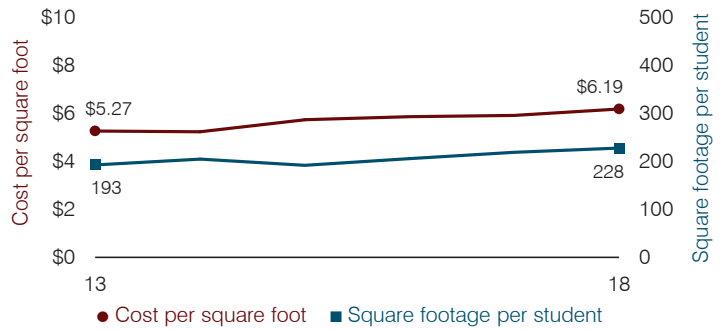
Administrative cost per pupil



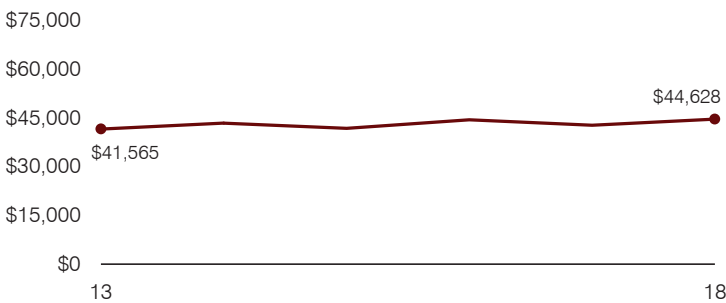
Total operational and instructional spending per pupil (inflation adjusted to 2018 dollars)



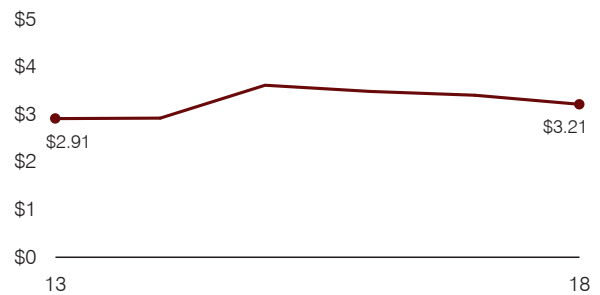
Plant cost per square foot and square footage per student



Average teacher salary



Food service cost per meal



Financial stress assessment

Overall financial stress level: Low

Measure: 2016 through 2018	Assessment
Change in number of district students	Moderate decrease
Spending exceeded operating/capital budgets	No overspending
Spending increase election results	No election held
Operating reserve percentage, Trend	6.2%, Increasing
Years of capital reserve held	1 to 3 years
Current financial and internal control status	Compliant

Low
Moderate
High

Transportation costs per mile and per rider

