

Littlefield Unified School District

Mohave County
Operational peer group: F
Legislative districts: 3

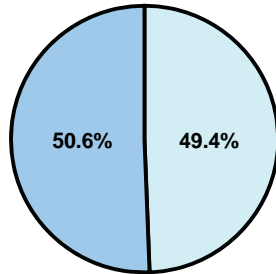
District size: Small
Students attending: 561
Number of schools: 2

OPERATIONAL EFFICIENCY

Average per-pupil spending

District
State

Classroom
\$3,969
\$4,497



Nonclassroom
\$3,879
\$3,411

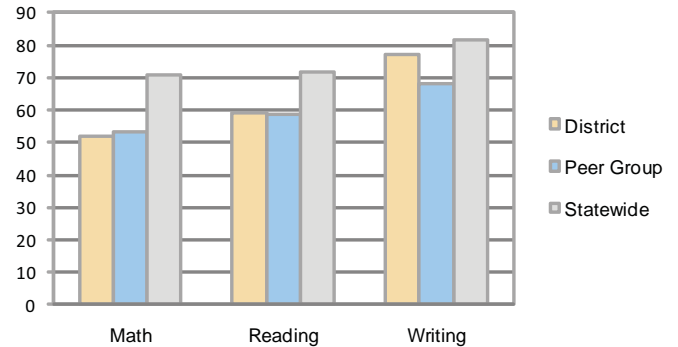
Total
\$7,848
\$7,908

5-year trend

Total spending per pupil increased by 11 percent. Spending in the classroom varied year to year and decreased significantly overall from 63.7 to 50.6 percent. Spending on administration, student support, and instruction support increased significantly, while spending in other nonclassroom areas varied year to year.

STUDENT ACHIEVEMENT AND TEACHER INFORMATION

Percentage of students meeting state standards (AIMS)



Adequate Yearly Progress (AYP) toward federal goals

1 school met all applicable AYP objectives for NCLB. 1 did not because some students did not demonstrate sufficient academic progress.

Student and teacher information

Measure	District	Peer average	State average
Attendance rate	94%	94%	95%
Graduation rate (2008)	73%	73%	75%
Poverty rate	22%	30%	19%
Student/teacher ratio	16.0	14.2	17.1
Average teacher salary	\$35,812	\$41,521	\$45,209
Average years' experience	6.2	10.8	8.3
Percent of teachers in first 3 years	27%	23%	16%

District's cost measures relative to peer group

Operational Area	Measure	District	Peer Average	State Average
Administration	Cost per pupil	\$1,433	\$1,524	\$729
	Students per administrator	57	42	66
Plant Operations	Cost per square foot	\$5.52	\$5.78	\$6.40
	Square footage per student	122	284	144
Food Service	Cost per meal equivalent	\$2.94	\$3.38	\$2.53
Transportation	Cost per mile	\$3.03	\$2.60	\$3.36
	Miles per rider	200	294	271

Very Low Low Comparable High Very High

Proposition 301

Teacher pay

On average, each teacher earned an additional \$2,960 in salary, and each librarian and counselor earned between \$3,141 and \$3,440.

Performance pay plan goals and results

Type of goal	Goal met?
Student achievement	■
Dropout/ graduation rates	■
Student attendance	■
Parent/student satisfaction	■
Teacher attendance	■
Teacher professional development	■
Teacher evaluations	■
Tutoring	■
Other	■

■ = yes, □ = no, and ▮ = partially

Per-pupil spending by function

	District		Peer	State	National
	2008	2009	2009	2009	2007
Total	\$7,953	\$7,848	\$10,596	\$7,908	\$9,683
Classroom dollars	\$4,345	\$3,969	\$5,393	\$4,497	\$5,903
Nonclassroom dollars:	\$3,608	\$3,879	\$5,203	\$3,411	\$3,780
Administration	1,435	1,433	1,524	729	1,050
Plant Operations	681	674	1,549	920	951
Food Service	462	463	496	382	369
Transportation	495	442	552	343	406
Student Support	306	395	593	594	512
Instruction Support	229	472	481	431	470
Other	0	0	8	12	22