

# Classroom Dollars and Proposition 301 Results

## Littlefield Unified School District

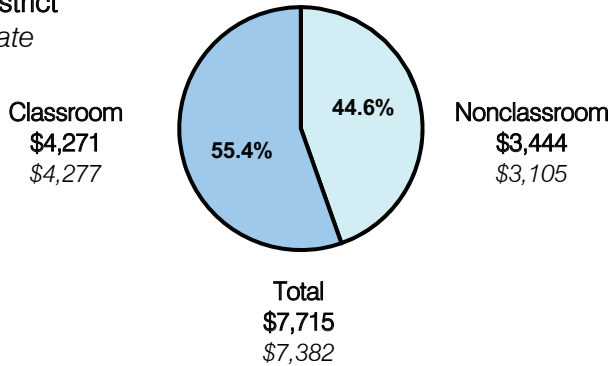
Mohave County

District size: Small  
 Students attending: 505  
 Number of schools: 2  
 Number of certified teachers: 35

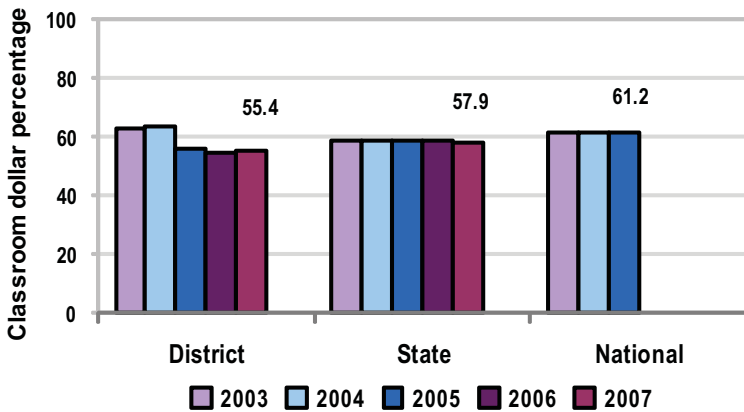
### Classroom Dollars

Fiscal year 2007 averages per pupil

District  
 State



5-year comparison



Expenditures by function

	District					State 2007	National 2005
	2003	2004	2005	2006	2007		
Classroom dollars	62.9	63.7	55.6	54.4	55.4	57.9	61.2
Nonclassroom dollars:							
Administration	11.5	10.5	15.6	15.3	15.7	9.5	11.0
Plant operations	9.3	9.0	10.8	10.6	10.1	11.3	9.6
Food service	6.7	6.7	6.6	7.7	5.9	4.7	3.9
Transportation	5.6	5.6	6.6	6.1	6.7	4.3	4.1
Student support	1.3	1.1	1.6	2.3	3.3	7.3	5.2
Instruction support	2.7	3.4	3.2	3.6	2.9	4.8	4.8
Other						0.2	0.2

### Comparative Information

	District			State 2007
	2005	2006	2007	
Student/teacher ratio	15.8	15.9	14.4	17.4
Average teacher salary	\$33,412	\$34,348	\$37,675	\$43,833
Average years' experience	6.5	6.4	6.8	8.1

Classroom dollar ranking: 108 of 229 districts.

### Proposition 301

#### District-reported 2007 results

##### Teacher pay

- On average, each teacher earned an additional \$3,463 in salary, each librarian earned an additional \$3,396, and each instructional aide earned an additional \$700.

##### Performance

- The District accomplished its goals, which were based on district, school, and individual performance.
- The District used end-of-the-semester and end-of-the-year tests to measure student achievement.
- Student attendance was maintained at 94 percent, and 85 percent of eligible students graduated.
- Parents and students participated in school-sponsored committees, programs, or activities.
- Teachers actively participated in professional development activities, faculty meetings, grade level/department meetings, and at least one committee, tutored if necessary, and received satisfactory performance evaluations.

##### Menu

- Monies continued to be used to pay for eligible employees' health insurance premiums.