

# Littleton Elementary School District

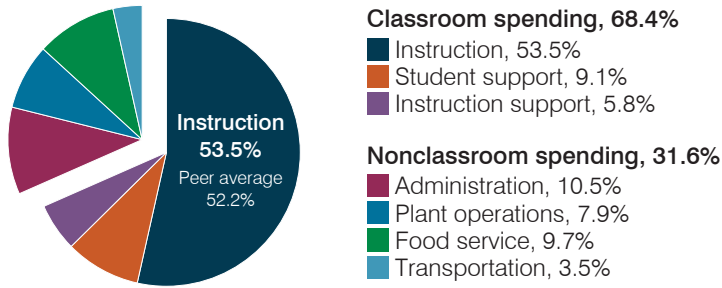
Maricopa County  
 Peer groups: Operational 8 and T-1, Achievement 13<sup>1</sup>  
 Legislative district(s): 19  
 District location: Suburb  
 Number of schools: 7  
 Graduation rate (2018): N/A

Students attending; Size: 5,685; Medium-large  
 5-year change in students attending: 9% increase  
 Special education population: 12%  
 English learner population: 12%  
 Poverty rate (2018): 17%  
 Free/reduced meal eligibility: 78%

## Instructional spending percentage by year

2001	2002	2003	2004	2005	2006	2007	2008	2009	2010	2011	2012	2013	2014	2015	2016	2017	2018	2019
56.8	56.4	53.5	56.4	58.2	57.0	56.8	57.7	59.0	58.1	57.2	53.9	53.0	53.9	51.8	52.5	52.0	52.5	53.5

## Spending by operational area



## Operational measures relative to peer averages

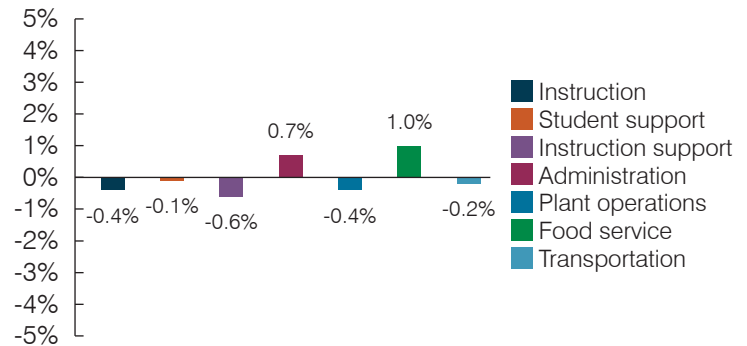
Operational area	Measure	District	Peer average	State average
Administration	Cost per pupil	\$864	\$1,047	\$903
	Students per administrative position	72	65	66
Plant operations	Cost per square foot	\$5.14	\$6.60	\$6.49
	Square footage per student	126	145	158
Food service	Cost per meal	\$3.24	\$2.91	\$3.08
Transportation	Cost per mile	\$6.12	\$7.55	\$4.29
	Cost per rider	\$836	\$1,108	\$1,424



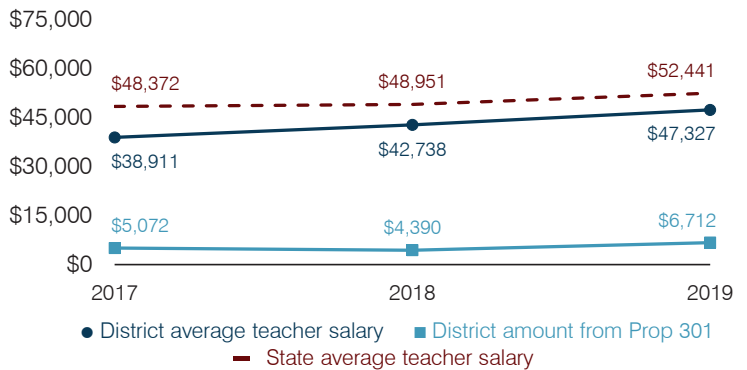
## Per pupil spending

Spending by area	District		Peer average 2019	State average 2019
	2018	2019		
Instruction	\$ 3,958	\$ 4,398	\$ 4,648	\$ 4,869
Student support	690	746	678	754
Instruction support	479	478	551	497
Administration	799	864	1,047	903
Plant operations	618	649	972	1,027
Food service	745	803	672	438
Transportation	253	289	345	417
<b>Total operational</b>	<b>7,542</b>	<b>8,227</b>	<b>8,913</b>	<b>8,905</b>
Land and buildings	571	417	1,393	1,086
Equipment	256	266	556	496
Interest	166	178	344	261
Other	23	28	203	180
<b>Total nonoperational</b>	<b>1,016</b>	<b>889</b>	<b>2,496</b>	<b>2,023</b>
<b>Total per pupil spending</b>	<b>\$ 8,558</b>	<b>\$ 9,116</b>	<b>\$11,409</b>	<b>\$10,928</b>

## Percentage point change in spending by operational area (fiscal year 2014 versus 2019)

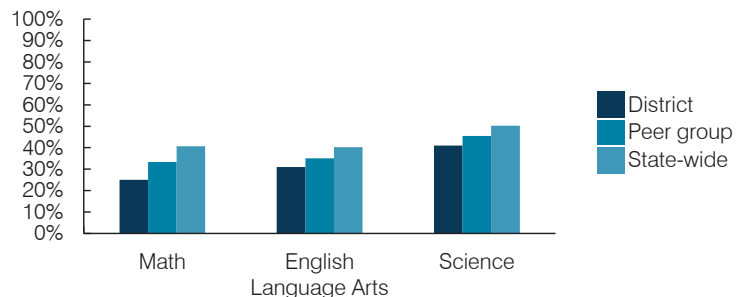


## Average teacher salary and other measures



Measure	2017	2018	2019
Students per teacher	16.9	17.7	17.0
Average years of teacher experience	5.3	6.0	5.3
Percentage of teachers in first 3 years	51%	44%	51%

## Students who passed State assessments<sup>2</sup>



<sup>1</sup> See Appendix A for information, such as districts included in each peer group, and Appendix B for sources and methodology.  
<sup>2</sup> School letter grades are available at <https://azreportcards.azed.gov>.