

Classroom Dollars and Proposition 301 Results

Littleton Elementary School District

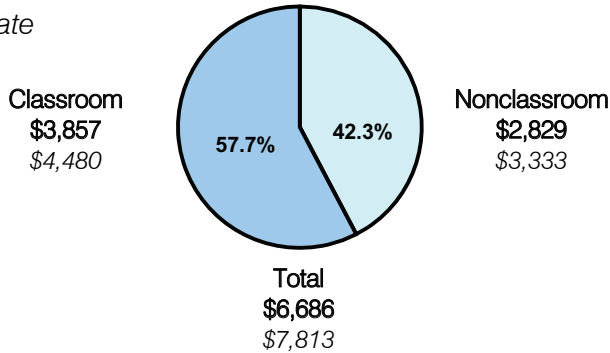
Maricopa County

District size: Medium
 Students attending: 4,678
 Number of schools: 6
 Number of certified teachers: 250

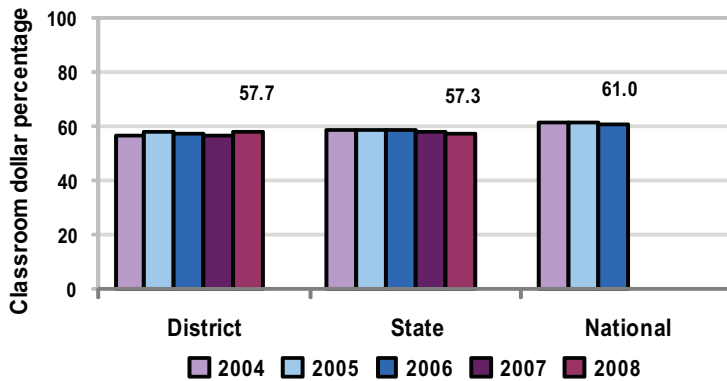
Classroom Dollars

Fiscal year 2008 averages per pupil

District
 State



5-year comparison



Expenditures by function

	District					State 2008	National 2006
	2004	2005	2006	2007	2008		
Classroom dollars	56.4	58.2	57.0	56.8	57.7	57.3	61.0
Nonclassroom dollars:							
Administration	9.4	9.0	10.1	9.6	8.9	9.2	10.8
Plant operations	9.6	8.8	9.8	9.4	9.2	11.3	9.9
Food service	7.2	6.7	6.3	6.6	6.1	4.8	3.8
Transportation	5.7	5.5	4.9	4.6	4.1	4.4	4.2
Student support	5.2	6.1	7.8	8.7	8.6	7.4	5.2
Instruction support	6.5	5.7	4.1	4.3	5.4	5.4	4.9
Other						0.2	0.2

Comparative Information

	District			State 2008
	2006	2007	2008	
Student/teacher ratio	20.9	21.0	18.7	17.3
Average teacher salary	\$38,664	\$37,630	\$40,565	\$44,967
Average years' experience	4.5	3.9	3.4	8.1

Classroom dollar ranking: 66 of 230 districts.

Proposition 301

District-reported 2008 results

Teacher pay

- On average, each teacher earned an additional \$4,628 in salary, and each counselor earned an additional \$4,012, which includes performance pay for fiscal year 2007 performance.

Performance

- The District accomplished its goals, which were based on school and individual performance.
- All schools met Adequate Yearly Progress objectives.
- Schools maintained at least a 95 percent attendance rate.
- Teachers participated in professional development activities and developed individual growth goals.

Menu

- Monies were used solely to increase eligible employee compensation.