

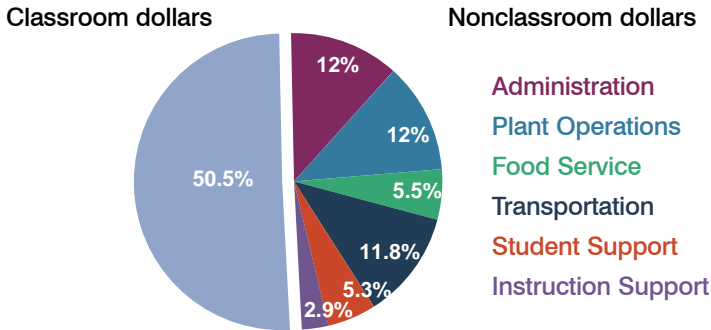
Maine Consolidated School District

Coconino County
Peer groups: Efficiency 12, Achievement 1
Legislative district(s): 1

District size: Very Small
Students attending: 107
Number of schools: 1

OPERATIONAL EFFICIENCY

Spending by function

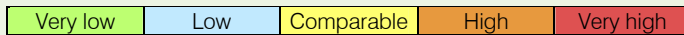


5-year trend

Total spending per pupil increased by 24 percent. Spending in the classroom was very inconsistent year to year, decreasing slightly overall from 50.7 to 50.5 percent. Spending on administration decreased significantly, while spending on plant operations increased significantly. Spending in other nonclassroom areas varied year to year.

District's cost measures relative to peer group

Operational Area	Measure	District	Peer Average	State Average
Administration	Cost per pupil	\$2,035	\$2,444	\$721
	Students per administrator	38	32	66
Plant Operations	Cost per square foot	\$7.35	\$7.59	\$6.25
	Square footage per student	276	297	146
Food Service	Cost per meal equivalent	\$7.13	\$4.85	\$2.41
Transportation	Cost per mile	\$3.29	\$1.87	\$3.35
	Miles per rider	589	611	282

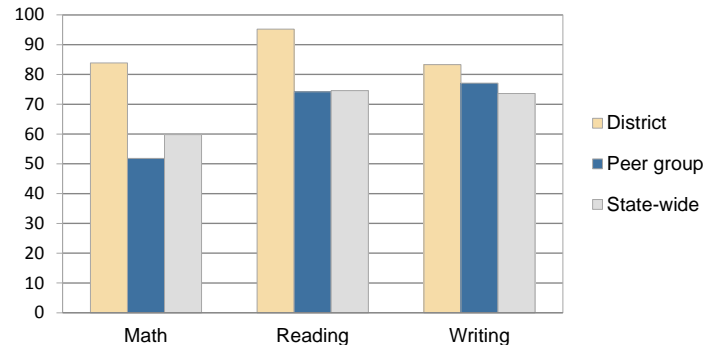


Per-pupil spending by function

	District		Peer 2010	State 2010	National 2008
	2009	2010			
Total	\$13,911	\$16,914	\$15,187	\$7,609	\$10,297
Classroom dollars	\$7,436	\$8,546	\$8,084	\$4,253	\$6,262
Nonclassroom dollars:	\$6,475	\$8,368	\$7,103	\$3,356	\$4,035
Administration	1,818	2,035	2,444	721	1,109
Plant Operations	1,489	2,030	2,188	914	1,003
Food Service	730	934	751	366	390
Transportation	1,367	1,992	924	342	438
Student Support	800	892	473	581	556
Instruction Support	271	485	323	432	539

STUDENT ACHIEVEMENT AND TEACHER INFORMATION

Percentage of students meeting state standards (AIMS)



Adequate Yearly Progress (AYP) toward federal goals

The District's school met all applicable AYP objectives for NCLB.

Student and teacher information

Measure	District	Peer Average	State Average
Attendance rate	90%	92%	94%
Graduation rate (2009)	N/A	N/A	76%
Poverty rate (2009)	10%	7%	21%
Student/teacher ratio	7.9	11.6	17.9
Average teacher salary	\$41,530	\$44,664	\$47,077
Average years' experience	8.4	12.8	10.6
Percent of teachers in first 3 years	0%	13%	20%

Proposition 301

Teacher and other staff pay

On average, each teacher earned \$3,750 in additional pay, and a librarian and counselor each earned between \$1,760 and \$1,955.

Performance pay plan goals and results

Type of goal	Goal met?
Student achievement	■
Dropout/graduation rates	-
Student attendance	■
Parent/student satisfaction	■
Teacher attendance	-
Teacher professional development	■
Teacher evaluations	-
Tutoring	-
Other	-

■ = yes, □ = no, ▴ = partially, and - = no goal set