

Mammoth-San Manuel Unified School District

Pinal County
Operational peer group: E
Legislative districts: 23

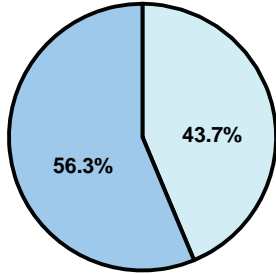
District size: Medium
Students attending: 1,131
Number of schools: 5

OPERATIONAL EFFICIENCY

Average per-pupil spending

District
State

Classroom
\$4,534
\$4,497



Nonclassroom
\$3,524
\$3,411

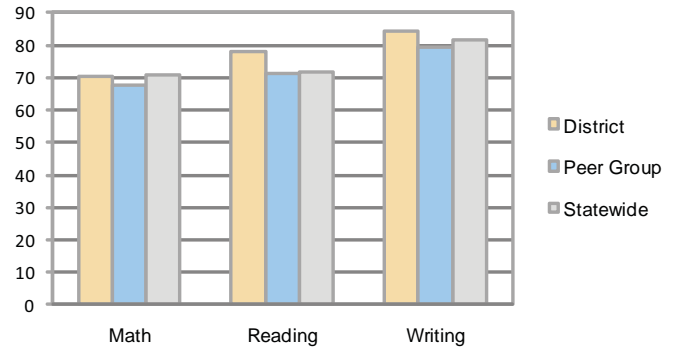
Total
\$8,058
\$7,908

5-year trend

Total spending per pupil increased by 13 percent. Spending in the classroom varied year to year and increased slightly overall from 55.9 to 56.3 percent. Spending on student and instruction support decreased, spending on plant operations increased, and spending in other nonclassroom areas remained fairly stable.

STUDENT ACHIEVEMENT AND TEACHER INFORMATION

Percentage of students meeting state standards (AIMS)



Adequate Yearly Progress (AYP) toward federal goals

5 schools met all applicable AYP objectives for NCLB.

Student and teacher information

| Measure | District | Peer average | State average |
|--------------------------------------|----------|--------------|---------------|
| Attendance rate | 95% | 95% | 95% |
| Graduation rate (2008) | 76% | 70% | 75% |
| Poverty rate | 18% | 15% | 19% |
| Student/teacher ratio | 15.7 | 16.8 | 17.1 |
| Average teacher salary | \$43,041 | \$42,842 | \$45,209 |
| Average years' experience | 10.7 | 10.1 | 8.3 |
| Percent of teachers in first 3 years | 18% | 24% | 16% |

District's cost measures relative to peer group

| Operational Area | Measure | District | Peer Average | State Average |
|------------------|----------------------------|----------|--------------|---------------|
| Administration | Cost per pupil | \$904 | \$1,148 | \$729 |
| | Students per administrator | 55 | 51 | 66 |
| Plant Operations | Cost per square foot | \$3.95 | \$5.49 | \$6.40 |
| | Square footage per student | 297 | 253 | 144 |
| Food Service | Cost per meal equivalent | \$2.59 | \$3.07 | \$2.53 |
| Transportation | Cost per mile | \$2.10 | \$2.53 | \$3.36 |
| | Miles per rider | 346 | 359 | 271 |

Very Low Low Comparable High Very High

Proposition 301

Teacher pay

On average, each teacher, librarian, and counselor earned \$5,328 in additional salary.

Performance pay plan goals and results

| Type of goal | Goal met? |
|----------------------------------|-----------|
| Student achievement | ▴ |
| Dropout/ graduation rates | ■ |
| Student attendance | ■ |
| Parent/student satisfaction | ■ |
| Teacher attendance | ■ |
| Teacher professional development | ■ |
| Teacher evaluations | ■ |
| Tutoring | ■ |
| Other | ■ |

■ = yes, □ = no, and ▴ = partially

Per-pupil spending by function

| | District | | Peer | State | National |
|------------------------------|----------------|----------------|----------------|----------------|----------------|
| | 2008 | 2009 | 2009 | 2009 | 2007 |
| Total | \$7,780 | \$8,058 | \$9,562 | \$7,908 | \$9,683 |
| Classroom dollars | \$4,315 | \$4,534 | \$4,925 | \$4,497 | \$5,903 |
| Nonclassroom dollars: | \$3,465 | \$3,524 | \$4,637 | \$3,411 | \$3,780 |
| Administration | 921 | 904 | 1,148 | 729 | 1,050 |
| Plant Operations | 1,147 | 1,175 | 1,379 | 920 | 951 |
| Food Service | 475 | 468 | 444 | 382 | 369 |
| Transportation | 319 | 275 | 554 | 343 | 406 |
| Student Support | 403 | 479 | 749 | 594 | 512 |
| Instruction Support | 197 | 221 | 356 | 431 | 470 |
| Other | 3 | 2 | 7 | 12 | 22 |