

# Classroom Dollars and Proposition 301 Results

## Mammoth-San Manuel Unified School District

Pinal County

District size: Medium  
 Students attending: 1,165  
 Number of schools: 5  
 Number of certified teachers: 74

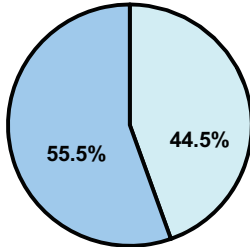
### Classroom Dollars

Fiscal year 2008 averages per pupil

District

State

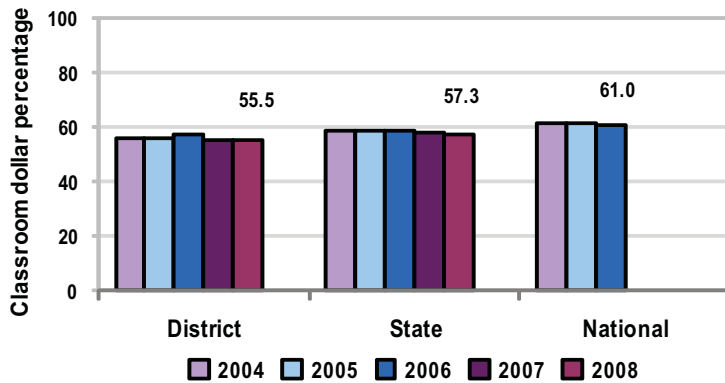
Classroom  
 \$4,319  
 \$4,480



Nonclassroom  
 \$3,461  
 \$3,333

Total  
 \$7,780  
 \$7,813

5-year comparison



### Expenditures by function

	District					State 2008	National 2006
	2004	2005	2006	2007	2008		
Classroom dollars	55.9	56.2	57.1	54.9	55.5	57.3	61.0
Nonclassroom dollars:							
Administration	10.5	10.6	10.5	11.3	11.8	9.2	10.8
Plant operations	12.2	12.9	13.8	14.0	13.9	11.3	9.9
Food service	5.9	6.7	6.3	6.2	6.2	4.8	3.8
Transportation	3.2	3.7	3.2	4.3	4.1	4.4	4.2
Student support	8.2	5.9	5.3	5.4	5.2	7.4	5.2
Instruction support	4.1	4.0	3.8	3.9	3.3	5.4	4.9
Other						0.2	0.2

### Comparative Information

	District			State 2008
	2006	2007	2008	
Student/teacher ratio	15.7	15.0	15.7	17.3
Average teacher salary	\$41,602	\$41,949	\$43,129	\$44,967
Average years' experience	10.6	10.5	9.9	8.1

Classroom dollar ranking: 108 of 230 districts.

### Proposition 301

#### District-reported 2008 results

##### Teacher pay

- On average, each teacher, librarian, and counselor earned between \$5,850 and \$6,022 in additional salary.

##### Performance

- The District accomplished most of its goals, which were based on school performance.
- 4 of 5 schools met Adequate Yearly Progress objectives, and all schools were labeled "Performing" or better by ADE for AZ LEARNS.
- The high school's graduation and dropout rates were at least equal to the state average.
- Student attendance was at least 94 percent.
- Students' AIMS test reading, writing, and math scores improved from the prior year's scores.
- Instructional strategies were implemented to address concerns identified in parent surveys.
- The District reports that homeroom tutoring helped students improve AIMS scores.

##### Menu

- Monies were used solely for increasing eligible employee compensation.