

Classroom Dollars and Proposition 301 Results

Mammoth-San Manuel Unified School District

Pinal County

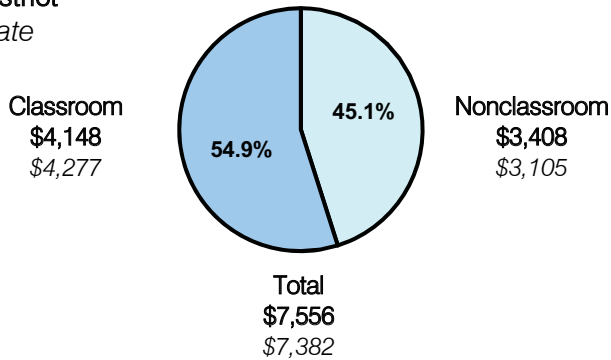
District size: Medium
 Students attending: 1,180
 Number of schools: 5
 Number of certified teachers: 78

Classroom Dollars

Fiscal year 2007 averages per pupil

District

State

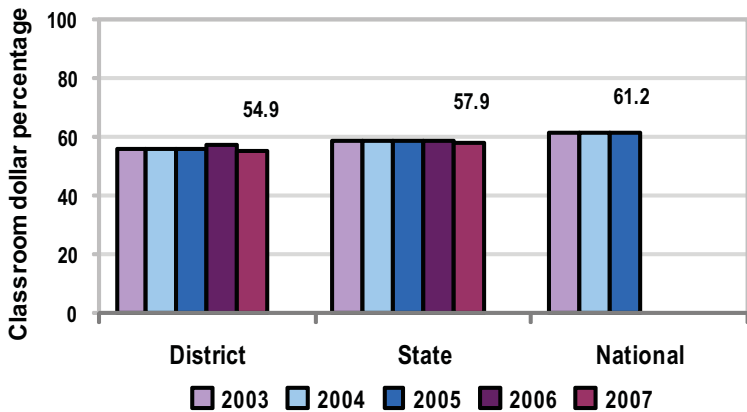


Comparative Information

	District			State
	2005	2006	2007	2007
Student/teacher ratio	15.5	15.7	15.0	17.4
Average teacher salary	\$34,955	\$41,602	\$41,949	\$43,833
Average years' experience	9.7	10.6	10.5	8.1

Classroom dollar ranking: 120 of 229 districts.

5-year comparison



Expenditures by function

	District					State	National
	2003	2004	2005	2006	2007	2007	2005
Classroom dollars	56.1	55.9	56.2	57.1	54.9	57.9	61.2
Nonclassroom dollars:							
Administration	11.1	10.5	10.6	10.5	11.3	9.5	11.0
Plant operations	12.2	12.2	12.9	13.8	14.0	11.3	9.6
Food service	5.3	5.9	6.7	6.3	6.2	4.7	3.9
Transportation	2.6	3.2	3.7	3.2	4.3	4.3	4.1
Student support	10.1	8.2	5.9	5.3	5.4	7.3	5.2
Instruction support	2.6	4.1	4.0	3.8	3.9	4.8	4.8
Other						0.2	0.2

Proposition 301

District-reported 2007 results

Teacher pay

- On average, each teacher, librarian, and counselor earned an additional \$5,250 in salary.

Performance

- The District accomplished its goals, which were based on school performance.
- All schools made Adequate Yearly Progress and were labeled "Performing" or better by ADE for AZ LEARNS.
- The high school's graduation rate was equal to or better than the state average.
- Student attendance was at least 94 percent.
- Students' AIMS test reading, writing, and math scores improved from the prior year's scores.
- Instructional strategies were implemented to address concerns identified in parent surveys.
- The District reports that homeroom tutoring helped students improve AIMS scores.

Menu

- Monies were used solely for increasing eligible employee compensation.