

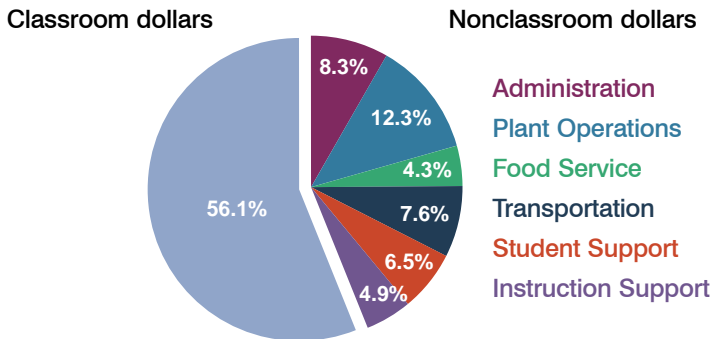
# Marana Unified School District

Pima County  
Peer groups: Efficiency Group 2, Achievement Group 2  
Legislative district(s): 25, 26 and 27

District size: Large  
Students attending: 12,328  
Number of schools: 16

## OPERATIONAL EFFICIENCY

### Spending by operational area



### 5-year trend

Total spending per pupil increased by 16 percent. Spending in the classroom varied year to year, decreasing significantly overall from 58.7 to 56.1 percent. Spending on instruction support increased, while spending on other nonclassroom areas remained fairly stable.

### District's cost measures relative to peer group

Operational Area	Measure	District	Peer Average	State Average
Administration	Cost per pupil	\$576	\$611	\$728
	Students per administrator	66	70	66
Plant Operations	Cost per square foot	\$6.16	\$6.25	\$6.10
	Square footage per student	139	147	152
Food Service	Cost per meal equivalent	\$2.46	\$2.59	\$2.45
Transportation	Cost per mile	\$3.12	\$3.34	\$3.39
	Miles per rider	303	324	283

Very low Low Comparable High Very high

### Per-pupil spending by operational area

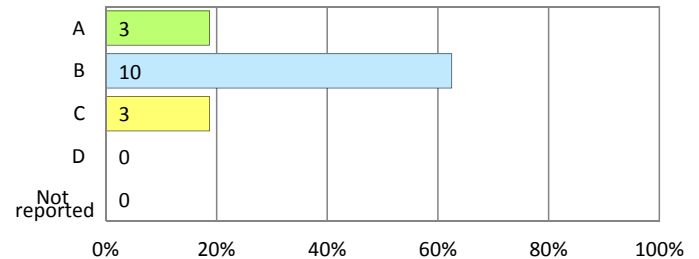
	District		Peer 2011	State 2011	National 2009
	2010	2011			
<b>Total</b>	<b>\$6,974</b>	<b>\$6,940</b>	<b>\$6,961</b>	<b>\$7,485</b>	<b>\$10,591</b>
<b>Classroom dollars</b>	<b>\$3,956</b>	<b>\$3,893</b>	<b>\$3,867</b>	<b>\$4,098</b>	<b>\$6,456</b>
<b>Nonclassroom dollars:</b>	<b>\$3,018</b>	<b>\$3,047</b>	<b>\$3,094</b>	<b>\$3,387</b>	<b>\$4,135</b>
Administration	603	576	611	728	1,147
Plant Operations	868	856	909	927	1,033
Food Service	297	301	304	375	404
Transportation	524	527	333	352	443
Student Support	437	449	518	571	573
Instruction Support	289	338	419	434	535

## STUDENT ACHIEVEMENT AND TEACHER INFORMATION

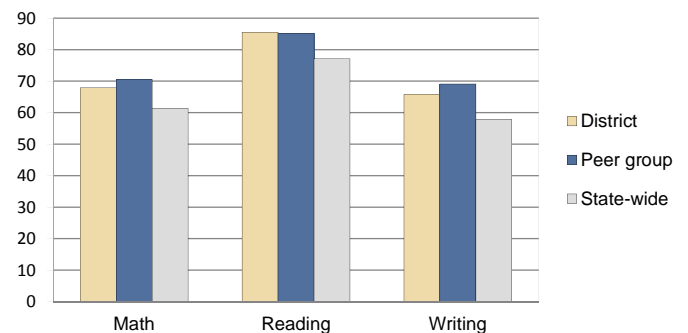
### District and school letter grades

District grade: **B**

### School grades (number and percentage):



### Percentage of students meeting state standards (AIMS)



### Student and teacher information

Measure	District	Peer Average	State Average
Attendance rate	95%	95%	95%
Graduation rate (2010)	84%	90%	78%
Poverty rate (2010)	12%	13%	22%
Students per teacher	16.4	18.2	18.1
Average teacher salary	\$40,429	\$46,027	\$45,637
Average years of experience	12.0	10.8	10.9
Percent of teachers in first 3 years	13%	16%	16%

### Proposition 301 pay, goals, and results

Average additional salary earned by teachers: \$3,435

Type of goal	Goal met?
Student achievement	■
Dropout/graduation rates	-
Student attendance	-
Parent/student satisfaction	-
Teacher attendance	-
Teacher professional development	■
Teacher evaluations	-
Tutoring	-
Other	■

■ = yes, □ = no, ▴ = partially, and - = no goal set