

# Marana Unified School District

Pima County  
Operational peer group: B  
Legislative districts: 25, 26, 27

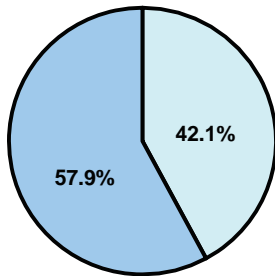
District size: Large  
Students attending: 12,287  
Number of schools: 16

## OPERATIONAL EFFICIENCY

### Average per-pupil spending

District  
State

**Classroom**  
\$4,431  
\$4,497



**Nonclassroom**  
\$3,221  
\$3,411

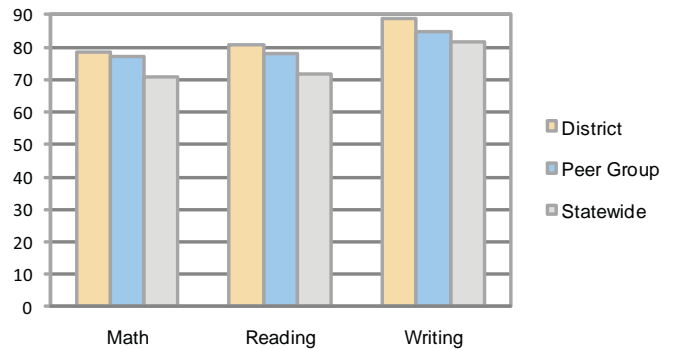
**Total**  
\$7,652  
\$7,908

### 5-year trend

Total spending per pupil increased by 39 percent. Spending in the classroom was fairly stable and decreased overall from 59.2 to 57.9 percent. Spending on student and instruction support increased, while spending in other nonclassroom areas remained fairly stable.

## STUDENT ACHIEVEMENT AND TEACHER INFORMATION

### Percentage of students meeting state standards (AIMS)



### Adequate Yearly Progress (AYP) toward federal goals

13 schools met all applicable AYP objectives for NCLB. 3 did not because they failed to meet 1 of the following objectives: percentage of students tested (1); academic progress (2).

### Student and teacher information

Measure	District	Peer average	State average
Attendance rate	93%	96%	95%
Graduation rate (2008)	83%	85%	75%
Poverty rate	11%	13%	19%
Student/teacher ratio	16.6	17.3	17.1
Average teacher salary	\$45,621	\$45,833	\$45,209
Average years' experience	11.1	9.1	8.3
Percent of teachers in first 3 years	21%	27%	16%

### District's cost measures relative to peer group

Operational Area	Measure	District	Peer Average	State Average
Administration	Cost per pupil	\$618	\$634	\$729
	Students per administrator	76	67	66
Plant Operations	Cost per square foot	\$6.51	\$6.67	\$6.40
	Square footage per student	139	142	144
Food Service	Cost per meal equivalent	\$2.53	\$2.64	\$2.53
Transportation	Cost per mile	\$3.29	\$3.44	\$3.36
	Miles per rider	321	290	271

Very Low    Low    Comparable    High    Very High

### Per-pupil spending by function

	District		Peer	State	National
	2008	2009	2009	2009	2007
<b>Total</b>	<b>\$7,431</b>	<b>\$7,652</b>	<b>\$7,523</b>	<b>\$7,908</b>	<b>\$9,683</b>
<b>Classroom dollars</b>	<b>\$4,259</b>	<b>\$4,431</b>	<b>\$4,247</b>	<b>\$4,497</b>	<b>\$5,903</b>
<b>Nonclassroom dollars:</b>	<b>\$3,172</b>	<b>\$3,221</b>	<b>\$3,276</b>	<b>\$3,411</b>	<b>\$3,780</b>
Administration	629	618	634	729	1,050
Plant Operations	911	904	936	920	951
Food Service	268	301	310	382	369
Transportation	573	564	359	343	406
Student Support	490	497	571	594	512
Instruction Support	291	325	443	431	470
Other	10	12	23	12	22

### Proposition 301

#### Teacher pay

On average, each teacher, librarian, speech pathologist, and counselor earned between \$6,399 and \$6,456 in additional salary.

#### Performance pay plan goals and results

Type of goal	Goal met?
Student achievement	■
Dropout/ graduation rates	
Student attendance	
Parent/student satisfaction	
Teacher attendance	
Teacher professional development	■
Teacher evaluations	
Tutoring	
Other	■

■ = yes, □ = no, and ▴ = partially