

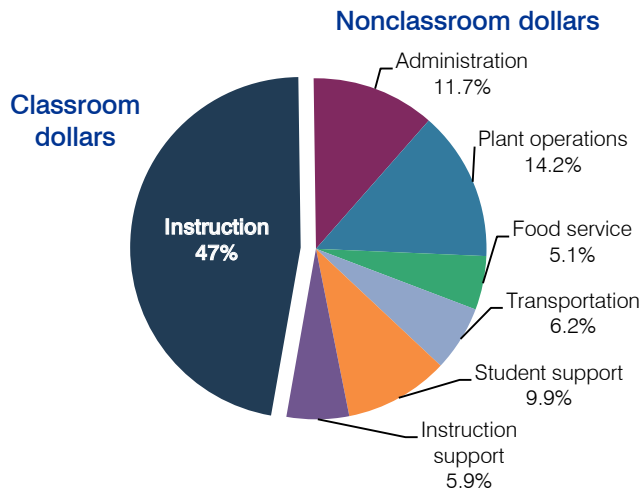
Maricopa Unified School District

Pinal County
 Efficiency peer groups 4 and T-7, Achievement peer group 4
 Legislative district(s): 11

District size / location: Medium-Large, Rural
 Students attending: 5,402
 Number of schools: 9

OPERATIONAL EFFICIENCY

Spending by operational area



5-year spending trend

Total spending per pupil increased by 30 percent. Spending in the classroom varied year to year, decreasing overall from 55.2 to 47 percent. Spending on plant operations increased substantially and spending on transportation and instruction support increased. Spending on other nonclassroom areas remained fairly stable.

Cost measures relative to peer averages

Operational area	Measure	District	Peer average	State average
Administration	Cost per pupil	\$809	\$748	\$736
	Students per administrator	89	66	66
Plant operations	Cost per square foot	\$6.63	\$5.53	\$6.09
	Square footage per student	148	173	152
Food service	Cost per meal equivalent	\$2.14	\$2.56	\$2.47
Transportation	Cost per mile	\$3.52	\$3.29	\$3.50
	Cost per rider	\$672	\$644	\$982

Very low Low Comparable High Very high

Per-pupil spending by operational area

	District		Peer average	State average	National average
	2011	2012	2012	2012	2010
Total	\$7,049	\$6,924	\$7,007	\$7,475	\$10,652
Classroom dollars	3,499	3,252	3,682	4,053	6,526
Nonclassroom dollars:	3,550	3,672	3,325	3,422	4,126
Administration	754	809	748	736	1,139
Plant operations	952	983	933	928	1,012
Food service	356	354	354	382	405
Transportation	418	431	369	362	443
Student support	674	685	540	578	592
Instruction support	396	410	381	436	535

STUDENT ACHIEVEMENT, TEACHER MEASURES, AND FINANCIAL ASSESSMENT

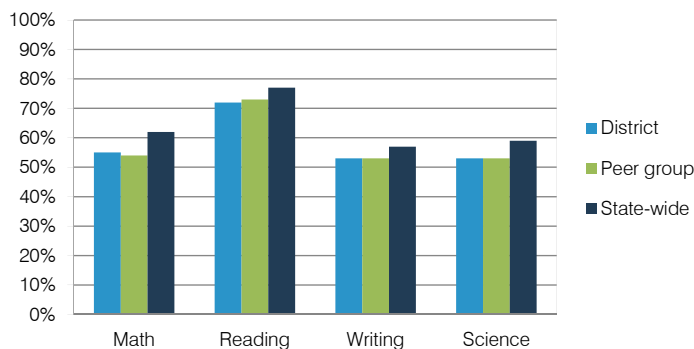
ADE-reported district and school letter grades

District grade: **C**

Grade	Number of schools ¹	Percentage of schools
A	1	10%
B	3	30%
C	3	30%
D	3	30%
F	0	0%
Not rated	0	0%

¹ Includes schools that share a campus and on-line schools.

Percentage of students who met state standards (AIMS)



Student and teacher measures

Measure	District	Peer average	State average
Attendance rate	94%	94%	94%
Graduation rate (2011)	76%	86%	78%
Poverty rate (2011)	13%	15%	25%
Students per teacher	17.4	14.3	18.1
Average teacher salary	\$36,066	\$39,138	\$45,193
Amount from Proposition 301	\$2,005	\$3,133	\$3,195
Average years of teacher experience	8.6	10.9	11.0
Percentage of teachers in first 3 years	5%	17%	16%

Financial stress assessment

Overall financial stress level: **Moderate**

Measure: 2010 through 2012	Assessment
Number of students attending	Large decrease
Spending exceeded operating/capital budgets	No overspending
Spending increase election results	Voter-rejected
Operating reserve percentage (max. 4%), trend	2.2%, Varying
Years of capital reserve held	1 to 3 years
Current financial and internal control status	Compliant

Stress level: **Low** **Moderate** **High**