

Maricopa Unified School District

Pinal County

Efficiency peer groups 4 and T-6, Achievement peer group 4

Legislative district(s): 11

District size, location:

Medium-large, Town

Students attending:

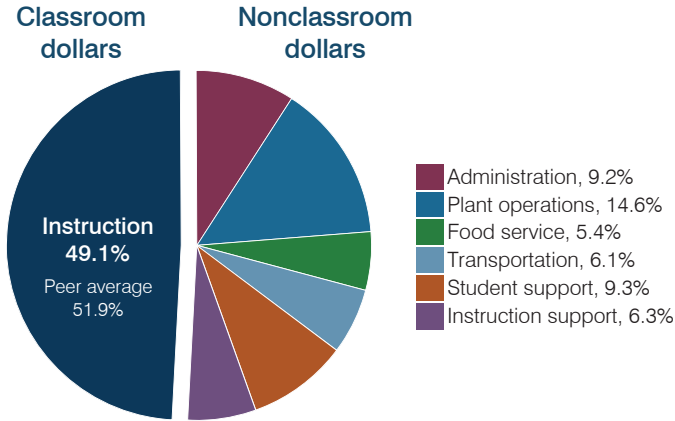
6,098

Number of schools:

9

OPERATIONAL EFFICIENCY

Spending by operational area



Efficiency measures relative to peer averages

Operational area	Measure	District	Peer average	State average
Administration	Cost per pupil	\$618	\$791	\$806
	Students per administrative position	99	69	67
Plant operations	Cost per square foot	\$6.63	\$5.35	\$6.10
	Square footage per student	148	191	154
Food service	Cost per meal	\$2.46	\$2.94	\$2.81
Transportation	Cost per mile	\$3.97	\$3.68	\$3.72
	Cost per rider	\$780	\$543	\$1,092

Per pupil spending

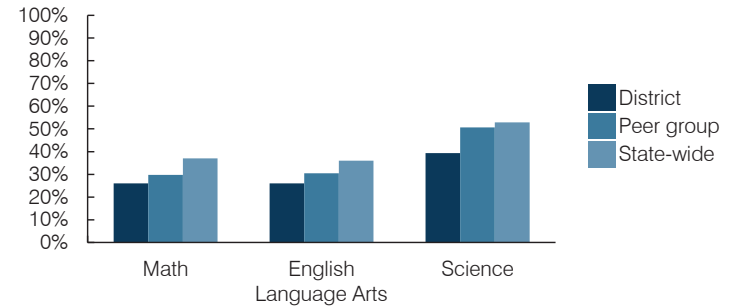
Spending by area	District		Peer average 2016	State average 2016
	2015	2016		
Instruction	\$ 3,370	\$ 3,306	\$ 3,915	\$ 4,145
Administration	671	618	791	806
Plant operations	969	984	987	939
Food service	371	366	402	415
Transportation	445	413	405	364
Student support	647	627	588	633
Instruction support	449	424	473	444
Total operational	\$ 6,922	\$ 6,738	\$ 7,561	\$ 7,746
Land and buildings	\$ 50	\$ 138	\$ 232	\$ 621
Equipment	225	222	291	400
Interest	310	182	195	216
Other	52	50	69	153
Total nonoperational	\$ 637	\$ 592	\$ 787	\$ 1,390
Total per pupil spending	\$ 7,559	\$ 7,330	\$ 8,348	\$ 9,136

STUDENT AND TEACHER MEASURES, FINANCIAL ASSESSMENT, AND REVENUES

Student and teacher measures

Measure	District	Peer average	State average
Attendance rate (2015)	94%	95%	94%
Graduation rate (2015)	69%	87%	78%
Poverty rate (2015)	14%	16%	23%
Students per teacher	20.3	15.3	18.6
Average teacher salary	\$41,221	\$43,729	\$46,384
Amount from Proposition 301	\$4,191	\$4,733	\$5,315
Average years of teacher experience	8.5	10.4	11.0
Percentage of teachers in first 3 years	16%	19%	20%

Students who passed state assessments



Financial stress assessment

Overall financial stress level: **Low**

Measure: 2014 through 2016

Assessment

Change in number of district students	Increase
Spending exceeded operating/capital budgets	No overspending
Spending increase election results	Voter-approved
Operating reserve percentage, Trend	3.9%, Increasing
Years of capital reserve held	More than 3 years
Current financial and internal control status	Compliant

Low	Moderate	High
------------	-----------------	-------------

Per pupil revenues

Revenues by source	District		Peer average 2016	State average 2016
	2015	2016		
Federal	\$ 1,014	\$ 913	\$ 2,396	\$ 1,301
State	4,744	4,935	3,985	3,780
Local	2,373	2,280	3,109	4,268
Total revenues per pupil	\$ 8,131	\$ 8,128	\$ 9,490	\$ 9,349

Select revenues from common sources

Equalization formula funding	\$ 5,399	\$ 5,150	\$ 5,347	\$ 5,471
Grants	1,208	982	1,480	1,182
Donations and tax credits	33	32	53	86

Select revenues from less common sources

		Number of peers receiving
Desegregation	\$ 219 \$ 212	1 of 18
Small school adjustment	0 0	0 of 18
Federal impact aid	35 24	7 of 18
Voter-approved levy increases	573 591	15 of 18

Classroom dollar percentage

Year:	2001	2002	2003	2004	2005	2006	2007	2008	2009	2010	2011	2012	2013	2014	2015	2016
Percentage:	59.1	56.8	58.8	51.1	55.8	55.5	55.2	59.7	52.3	50.7	49.6	47.0	47.4	47.0	48.7	49.1

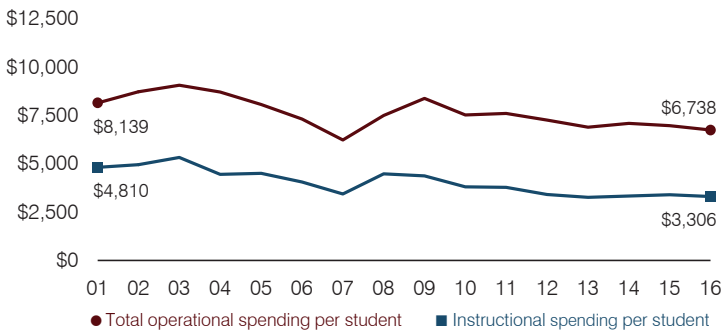
OPERATIONAL TRENDS

Fiscal years as indicated

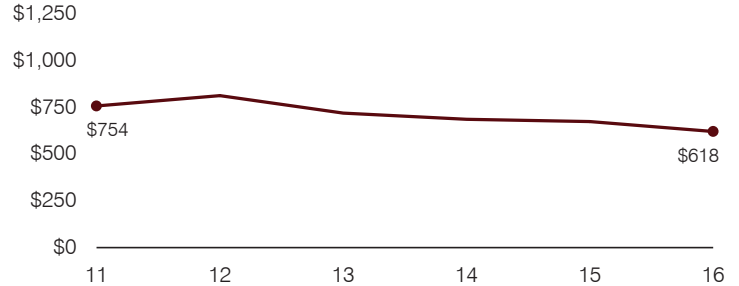
5-year spending trend (2011 through 2016)

Total operational spending per pupil, adjusted for inflation, decreased by 11 percent. The percentage of dollars spent in the classroom varied year to year, ranging overall from a high of 49.6 to a low of 47 percent. Overall, as a percentage of total operational spending, plant operations increased and instruction support increased slightly, while administration decreased. Other nonclassroom areas remained fairly stable.

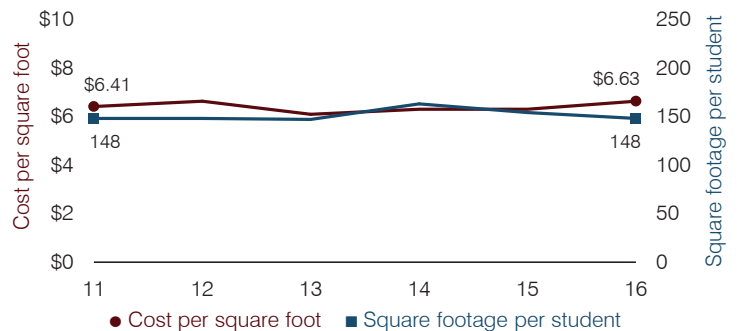
Total operational and instructional spending per pupil (inflation adjusted to 2016 dollars)



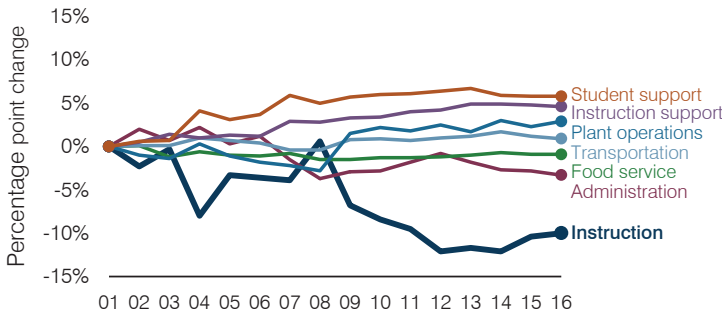
Administrative cost per pupil



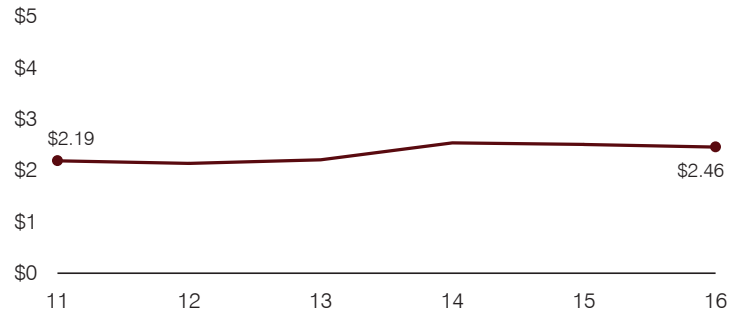
Plant cost per square foot and square footage per student



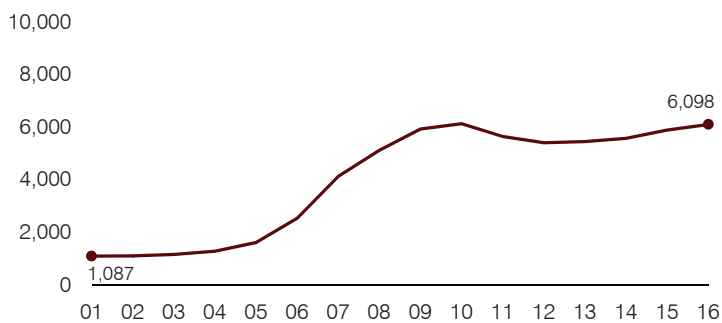
Changes in operational spending percentages



Food service cost per meal



Students attending



Transportation costs per mile and per rider

