

Maricopa Unified School District

Pinal County
Peer groups: Efficiency Group 4, Achievement Group 4
Legislative district(s): 23 and 25

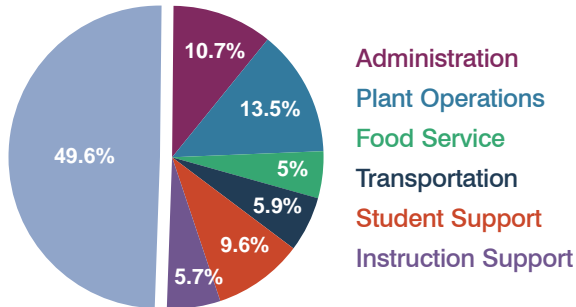
District size: Medium-Large
Students attending: 5,639
Number of schools: 9

OPERATIONAL EFFICIENCY

Spending by operational area

Classroom dollars

Nonclassroom dollars



5-year trend

Total spending per pupil increased by 16 percent. Spending in the classroom was very inconsistent year to year, decreasing significantly overall from 55.5 to 49.6 percent. Spending on administration decreased significantly, and spending on plant operations, student support, and instruction support increased significantly. Spending on other nonclassroom areas remained stable.

District's cost measures relative to peer group

Operational Area	Measure	District	Peer Average	State Average
Administration	Cost per pupil	\$754	\$736	\$728
	Students per administrator	80	65	66
Plant Operations	Cost per square foot	\$6.41	\$5.52	\$6.10
	Square footage per student	148	169	152
Food Service	Cost per meal equivalent	\$2.19	\$2.60	\$2.45
Transportation	Cost per mile	\$3.59	\$2.93	\$3.39
	Miles per rider	179	324	283

Very low Low Comparable High Very high

Per-pupil spending by operational area

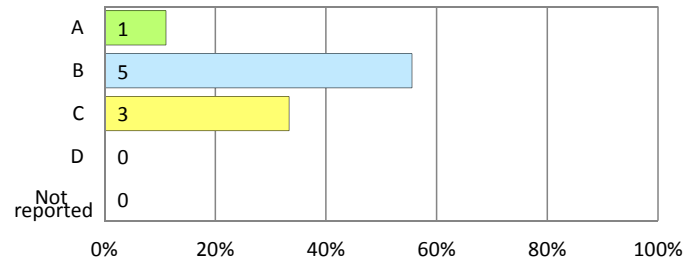
	District		Peer 2011	State 2011	National 2009
	2010	2011			
Total	\$6,833	\$7,049	\$7,026	\$7,485	\$10,591
Classroom dollars	\$3,464	\$3,499	\$3,783	\$4,098	\$6,456
Nonclassroom dollars:	\$3,369	\$3,550	\$3,243	\$3,387	\$4,135
Administration	659	754	736	728	1,147
Plant Operations	953	952	917	927	1,033
Food Service	343	356	351	375	404
Transportation	418	418	360	352	443
Student Support	649	674	528	571	573
Instruction Support	347	396	351	434	535

STUDENT ACHIEVEMENT AND TEACHER INFORMATION

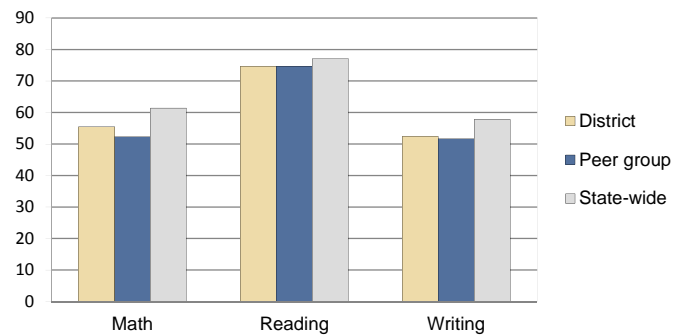
District and school letter grades

District grade: **B**

School grades (number and percentage):



Percentage of students meeting state standards (AIMS)



Student and teacher information

Measure	District	Peer Average	State Average
Attendance rate	95%	95%	95%
Graduation rate (2010)	75%	77%	78%
Poverty rate (2010)	10%	11%	22%
Students per teacher	16.6	15.6	18.1
Average teacher salary	\$38,468	\$38,961	\$45,637
Average years of experience	7.7	10.0	10.9
Percent of teachers in first 3 years	15%	19%	16%

Proposition 301 pay, goals, and results

Average additional salary earned by teachers: \$1,768

Type of goal	Goal met?
Student achievement	▀
Dropout/graduation rates	▀
Student attendance	▀
Parent/student satisfaction	▀
Teacher attendance	▀
Teacher professional development	▀
Teacher evaluations	▀
Tutoring	▀
Other	▀

■ = yes, □ = no, ▀ = partially, and - = no goal set