

# Mayer Unified School District

Yavapai County  
Operational peer group: F  
Legislative districts: 4

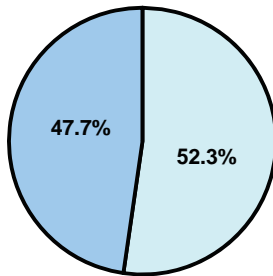
District size: Small  
Students attending: 495  
Number of schools: 2

## OPERATIONAL EFFICIENCY

### Average per-pupil spending

District  
State

Classroom  
\$4,240  
\$4,497



Nonclassroom  
\$4,645  
\$3,411

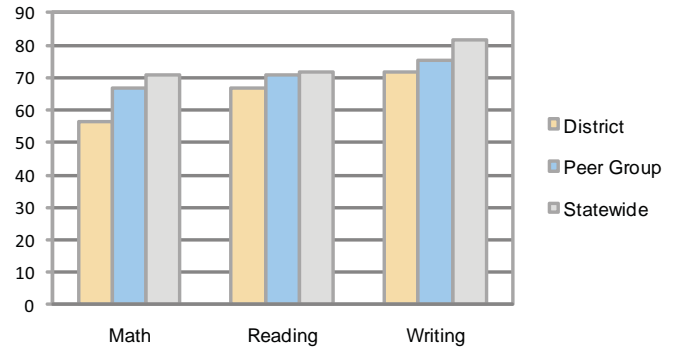
Total  
\$8,885  
\$7,908

### 5-year trend

Total spending per pupil increased by 20 percent. Spending in the classroom was very inconsistent year to year and decreased significantly overall from 54.4 to 47.7 percent. Spending on plant operations, transportation, and student support increased significantly, while spending in other nonclassroom areas varied year to year.

## STUDENT ACHIEVEMENT AND TEACHER INFORMATION

### Percentage of students meeting state standards (AIMS)



### Adequate Yearly Progress (AYP) toward federal goals

2 schools met all applicable AYP objectives for NCLB.

### Student and teacher information

Measure	District	Peer average	State average
Attendance rate	91%	95%	95%
Graduation rate (2008)	75%	79%	75%
Poverty rate	18%	14%	19%
Student/teacher ratio	16.1	14.7	17.1
Average teacher salary	\$34,590	\$43,600	\$45,209
Average years' experience	9.7	10.7	8.3
Percent of teachers in first 3 years	30%	23%	16%

### District's cost measures relative to peer group

Operational Area	Measure	District	Peer Average	State Average
Administration	Cost per pupil	\$1,099	\$1,524	\$729
	Students per administrator	46	42	66
Plant Operations	Cost per square foot	\$6.27	\$5.78	\$6.40
	Square footage per student	213	284	144
Food Service	Cost per meal equivalent	\$2.75	\$3.38	\$2.53
Transportation	Cost per mile	\$2.24	\$2.60	\$3.36
	Miles per rider	336	294	271

Very Low Low Comparable High Very High

### Per-pupil spending by function

	District		Peer	State	National
	2008	2009	2009	2009	2007
<b>Total</b>	<b>\$8,604</b>	<b>\$8,885</b>	<b>\$10,596</b>	<b>\$7,908</b>	<b>\$9,683</b>
<b>Classroom dollars</b>	<b>\$4,317</b>	<b>\$4,240</b>	<b>\$5,393</b>	<b>\$4,497</b>	<b>\$5,903</b>
<b>Nonclassroom dollars:</b>	<b>\$4,287</b>	<b>\$4,645</b>	<b>\$5,203</b>	<b>\$3,411</b>	<b>\$3,780</b>
Administration	1,038	1,099	1,524	729	1,050
Plant Operations	1,138	1,336	1,549	920	951
Food Service	511	548	496	382	369
Transportation	826	778	552	343	406
Student Support	570	671	593	594	512
Instruction Support	204	213	481	431	470
Other	0	0	8	12	22

### Proposition 301

#### Teacher pay

On average, each teacher, speech pathologist, and counselor earned between \$5,913 and \$6,000 in additional salary.

#### Performance pay plan goals and results

Type of goal	Goal met?
Student achievement	■
Dropout/ graduation rates	
Student attendance	▲
Parent/student satisfaction	■
Teacher attendance	
Teacher professional development	▲
Teacher evaluations	
Tutoring	
Other	▲

■ = yes, □ = no, and ▲ = partially