

McNeal Elementary School District

Cochise County

District size, location:

Very small, Rural

Efficiency peer groups 11 and T-11, Achievement peer group 18¹

Students attending:

58

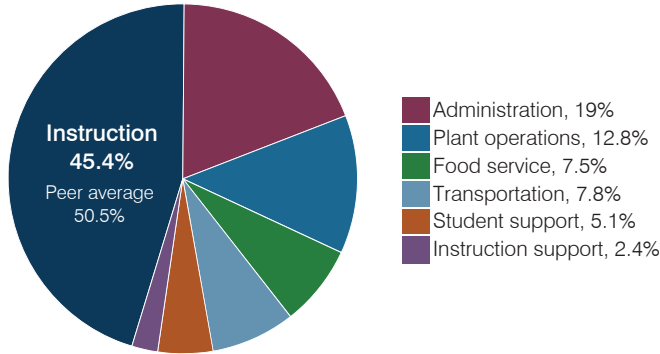
Legislative district(s): 14

Number of schools:

1

OPERATIONAL EFFICIENCY

Spending by operational area



Efficiency measures relative to peer averages

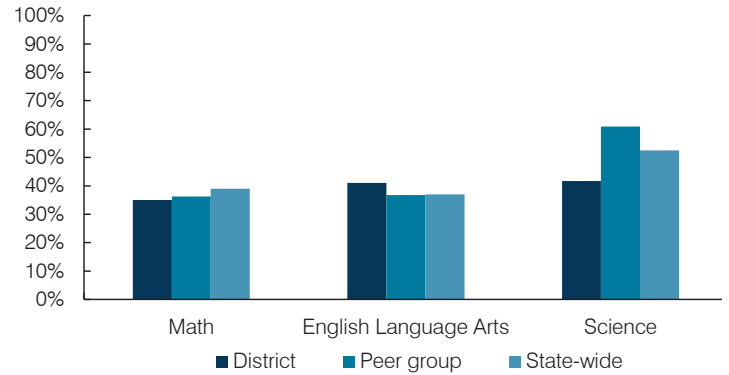
Operational area	Measure	District	Peer average	State average
Administration	Cost per pupil	\$2,296	\$3,137	\$844
	Students per administrative position	23	32	67
Plant operations	Cost per square foot	\$10.55	\$6.96	\$6.30
	Square footage per student	147	412	155
Food service	Cost per meal	\$3.55	\$5.79	\$2.88
Transportation	Cost per mile	\$1.30	\$1.87	\$3.84
	Cost per rider	\$1,074	\$1,459	\$1,198

Per pupil spending

Spending by area	District		Peer average 2017	State average 2017
	2016	2017		
Instruction	\$ 5,403	\$ 5,489	\$ 8,613	\$ 4,377
Administration	2,433	2,296	3,137	844
Plant operations	1,659	1,552	2,644	977
Food service	927	901	1,000	422
Transportation	999	942	961	381
Student support	630	616	601	679
Instruction support	180	289	498	461
Total operational	\$ 12,231	\$ 12,085	\$ 17,454	\$ 8,141
Land and buildings	\$ 142	\$ 128	\$ 1,161	\$ 691
Equipment	827	1,194	735	424
Interest	30	15	31	236
Other	0	0	90	161
Total nonoperational	\$ 999	\$ 1,337	\$ 2,017	\$ 1,512
Total per pupil spending	\$ 13,230	\$ 13,422	\$ 19,471	\$ 9,653

STUDENT ACHIEVEMENT, STUDENT AND TEACHER MEASURES, AND REVENUES

Students who passed state assessments



Student and teacher measures

Measure	District	Peer average	State average
Attendance rate	95%	94%	94%
Graduation rate (2016)	N/A	N/A	N/A
Poverty rate (2016)	29%	26%	22%
Special education population	17%	14%	12%
Students per teacher	14.5	14.6	18.5
Average teacher salary	\$49,042	\$49,194	\$48,372
Amount from Prop 301	\$5,442	\$5,175	\$5,840
Average years of teacher experience	23.5	14.0	11.3
Percentage of teachers in first 3 years	0%	7%	19%

Per pupil revenues

Revenues by source	District		Peer average 2017	State average 2017
	2016	2017		
Federal	\$ 1,762	\$ 1,318	\$ 2,908	\$ 1,318
State	6,765	7,092	5,692	3,831
Local	4,692	3,921	13,343	4,443
Total per pupil revenues	\$ 13,219	\$ 12,331	\$ 21,943	\$ 9,592

Select revenues from common sources

	District	Peer average	State average
Equalization formula funding	\$ 7,351	\$ 8,360	\$ 9,932
Amount from Prop 123	253	266	315
Prop 123 additional funding	39	47	57
Grants	1,829	1,400	2,701
Donations and tax credits	66	63	184

Select revenues from less common sources

	District	Peer average	State average
Desegregation	\$ 0	\$ 0	0 of 54
Small school adjustment	2,617	2,326	44 of 54
Federal impact aid	0	0	5 of 54
Voter-approved levy increases	0	0	7 of 54

¹ See Appendix A for information such as districts included in each peer group and Appendix B for sources and methodology.

Instructional spending percentage

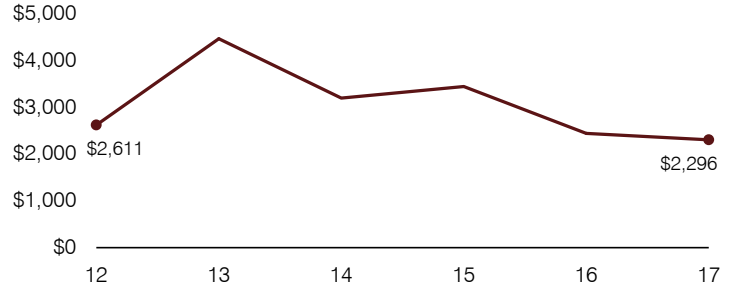
Year:	2001	2002	2003	2004	2005	2006	2007	2008	2009	2010	2011	2012	2013	2014	2015	2016	2017
Percentage:	76.6	68.7	60.1	49.9	49.2	47.7	54.0	51.8	48.3	44.3	46.9	45.6	45.7	45.1	43.4	44.2	45.4

OPERATIONAL TRENDS AND FINANCIAL STRESS ASSESSMENT
Fiscal years as indicated

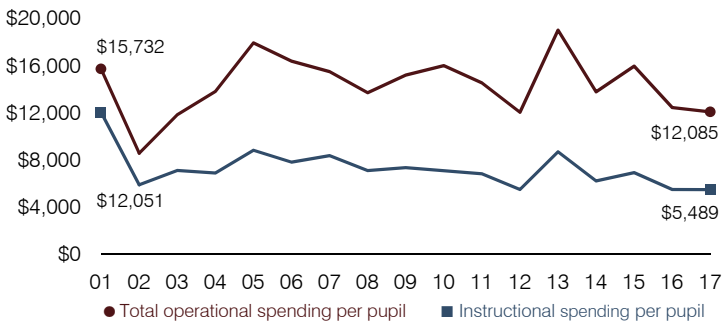
5-year spending trend (2012 through 2017)

Total operational spending per pupil, adjusted for inflation, returned to 2012 levels. The percentage of dollars spent on instruction varied year to year, decreasing slightly overall from 45.6 to 45.4 percent. As a percentage of total operational spending, most noninstructional areas also varied year to year, as is common for very small districts. Overall, plant operations increased, while administration decreased substantially.

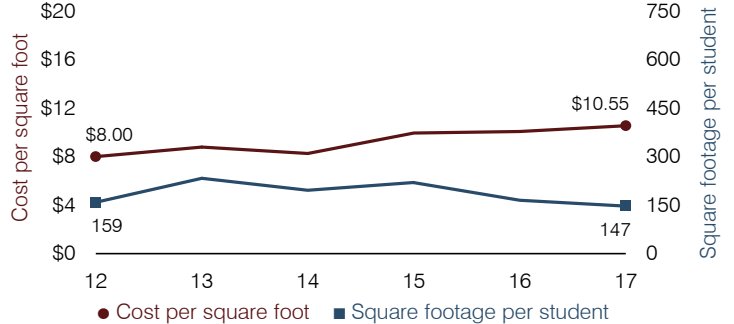
Administrative cost per pupil



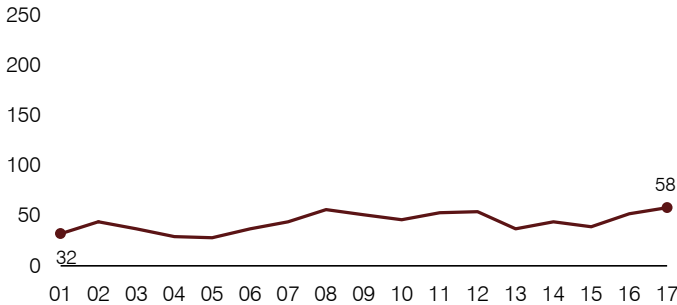
Total operational and instructional spending per pupil (inflation adjusted to 2017 dollars)



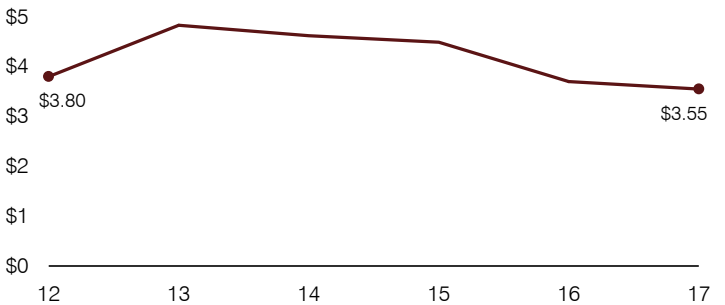
Plant cost per square foot and square footage per student



Students attending



Food service cost per meal



Financial stress assessment

Overall financial stress level: **Low**

Measure: 2015 through 2017	Assessment
Change in number of district students	Small school adjustment
Spending exceeded operating/capital budgets	No overspending
Spending increase election results	No election held
Operating reserve percentage, Trend	Frozen taxes, Unfunded
Years of capital reserve held	More than 3 years
Current financial and internal control status	Not assessed

Low
Moderate
High

Transportation costs per mile and per rider

