

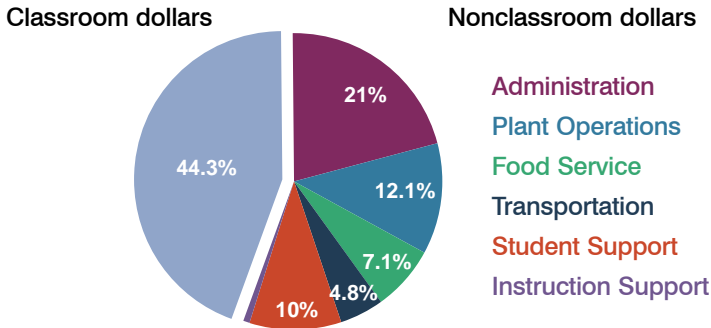
# McNeal Elementary School District

Cochise County  
Peer groups: Efficiency 12, Achievement 8  
Legislative district(s): 25

District size: Very Small  
Students attending: 46  
Number of schools: 1

## OPERATIONAL EFFICIENCY

### Spending by function

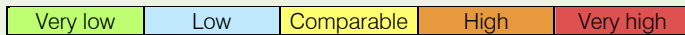


### 5-year trend

Total spending per pupil increased by 1 percent. Spending in the classroom was very inconsistent year to year, decreasing significantly overall from 49.2 to 44.3 percent. Spending on student support increased significantly, while spending on administration and plant operations decreased significantly. Spending in other nonclassroom areas remained fairly stable.

### District's cost measures relative to peer group

Operational Area	Measure	District	Peer Average	State Average
Administration	Cost per pupil	\$3,009	\$2,444	\$721
	Students per administrator	23	32	66
Plant Operations	Cost per square foot	\$9.36	\$7.59	\$6.25
	Square footage per student	185	297	146
Food Service	Cost per meal equivalent	\$4.00	\$4.85	\$2.41
Transportation	Cost per mile	\$0.87	\$1.87	\$3.35
	Miles per rider	828	611	282

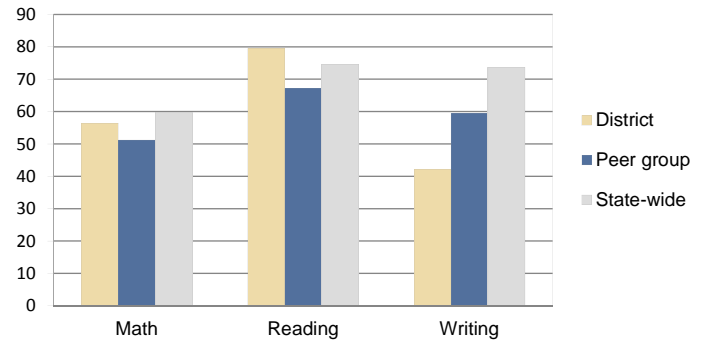


### Per-pupil spending by function

	District		Peer 2010	State 2010	National 2008
	2009	2010			
<b>Total</b>	<b>\$13,460</b>	<b>\$14,307</b>	<b>\$15,187</b>	<b>\$7,609</b>	<b>\$10,297</b>
<b>Classroom dollars</b>	<b>\$6,506</b>	<b>\$6,339</b>	<b>\$8,084</b>	<b>\$4,253</b>	<b>\$6,262</b>
<b>Nonclassroom dollars:</b>	<b>\$6,954</b>	<b>\$7,968</b>	<b>\$7,103</b>	<b>\$3,356</b>	<b>\$4,035</b>
Administration	2,907	3,009	2,444	721	1,109
Plant Operations	1,635	1,732	2,188	914	1,003
Food Service	1,062	1,021	751	366	390
Transportation	609	684	924	342	438
Student Support	677	1,430	473	581	556
Instruction Support	64	92	323	432	539

## STUDENT ACHIEVEMENT AND TEACHER INFORMATION

### Percentage of students meeting state standards (AIMS)



### Adequate Yearly Progress (AYP) toward federal goals

The District's school met all applicable AYP objectives for NCLB.

### Student and teacher information

Measure	District	Peer Average	State Average
Attendance rate	95%	94%	94%
Graduation rate (2009)	N/A	N/A	76%
Poverty rate (2009)	32%	34%	21%
Student/teacher ratio	9.2	14.4	17.9
Average teacher salary	\$39,880	\$43,616	\$47,077
Average years' experience	12.2	11.0	10.6
Percent of teachers in first 3 years	0%	20%	20%

### Proposition 301

#### Teacher and other staff pay

On average, each teacher earned \$2,717 in additional pay.

#### Performance pay plan goals and results

Type of goal	Goal met?
Student achievement	■
Dropout/graduation rates	-
Student attendance	-
Parent/student satisfaction	■
Teacher attendance	-
Teacher professional development	-
Teacher evaluations	-
Tutoring	-
Other	■

■ = yes, □ = no, ▴ = partially, and - = no goal set